



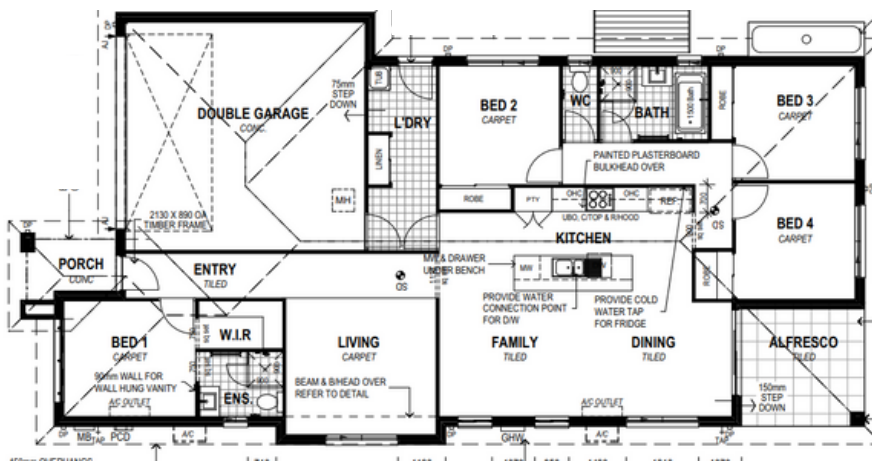
Turn-Key House and Land Package \$898,000

Lot 715 Brush Creek Estate
Edgeworth

Land Size: 508m2 | House Size: 191m2
Images indicative only and may show upgraded items.

GREAT INCLUSIONS

- Stone Kitchen Benchtop
- 600mm Oven, Rangehood, Dishwasher & Cooktop
- Split System Air-conditioning x 2
- Carpet & Tiles
- Blinds
- Electrical All Throughout
- Driveway, Fencing, Landscaping
- Flyscreens
- Covered & Tiled Alfresco
- The home will be completely finished inside & out



- Walk-in Pantry Option Available

KERRI-ANN HOOPER
0402 107 194
sales@carnelianprojects.com.au