

# HOME AND LAND

# Domaine homes



HOME SIZE: 132.3M<sup>2</sup>

LAND SIZE: 456M<sup>2</sup>

3 Beds 1 Bath 2 Living Areas 1 Car

## \$708,765\*

### LUX 15 NARROW TRADITIONAL FACADE

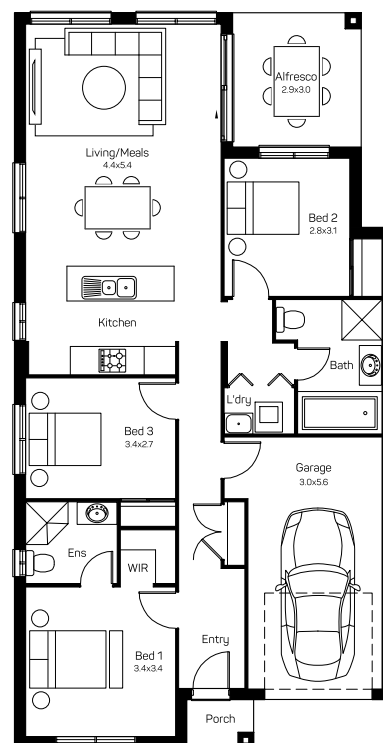
Lot 720 Kenakan Street, Edgeworth, Brush Creek Estate

#### HOUSE AND LAND PACKAGE INCLUSIONS

- Lifetime Structural Guarantee
- Hybrid steel frame
- Floor coverings
- Flyscreens to opening windows
- Haier kitchen appliances
- Air Conditioning
- Soft close drawers and doors to kitchen and bathroom
- 3.3kW Solar Package

\*Price is inclusive of land price

And much, much more...



Domaine Homes | [contact@domainehomes.com.au](mailto:contact@domainehomes.com.au) | 13 64 69

\*Facade image may depict features not included in the package prices shown such as render, tiling, lighting, roof covering, timber decking and landscaping. Plans are subject to approval by the Principal Developer and Local Authorities. Domaine Homes NSW reserves the right to withdraw or alter this package at any time without notice. Allowance for site costs included. Pricing is subject to change without notice. Domaine Homes NSW is not the owner of the land and is not responsible for final site dimensions or registration times. All information given at this time is believed to be correct.