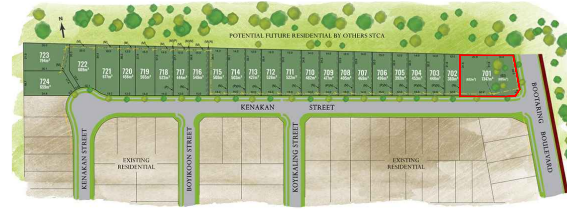


# LOT 701, KENAKAN STREET, EDGEWORTH

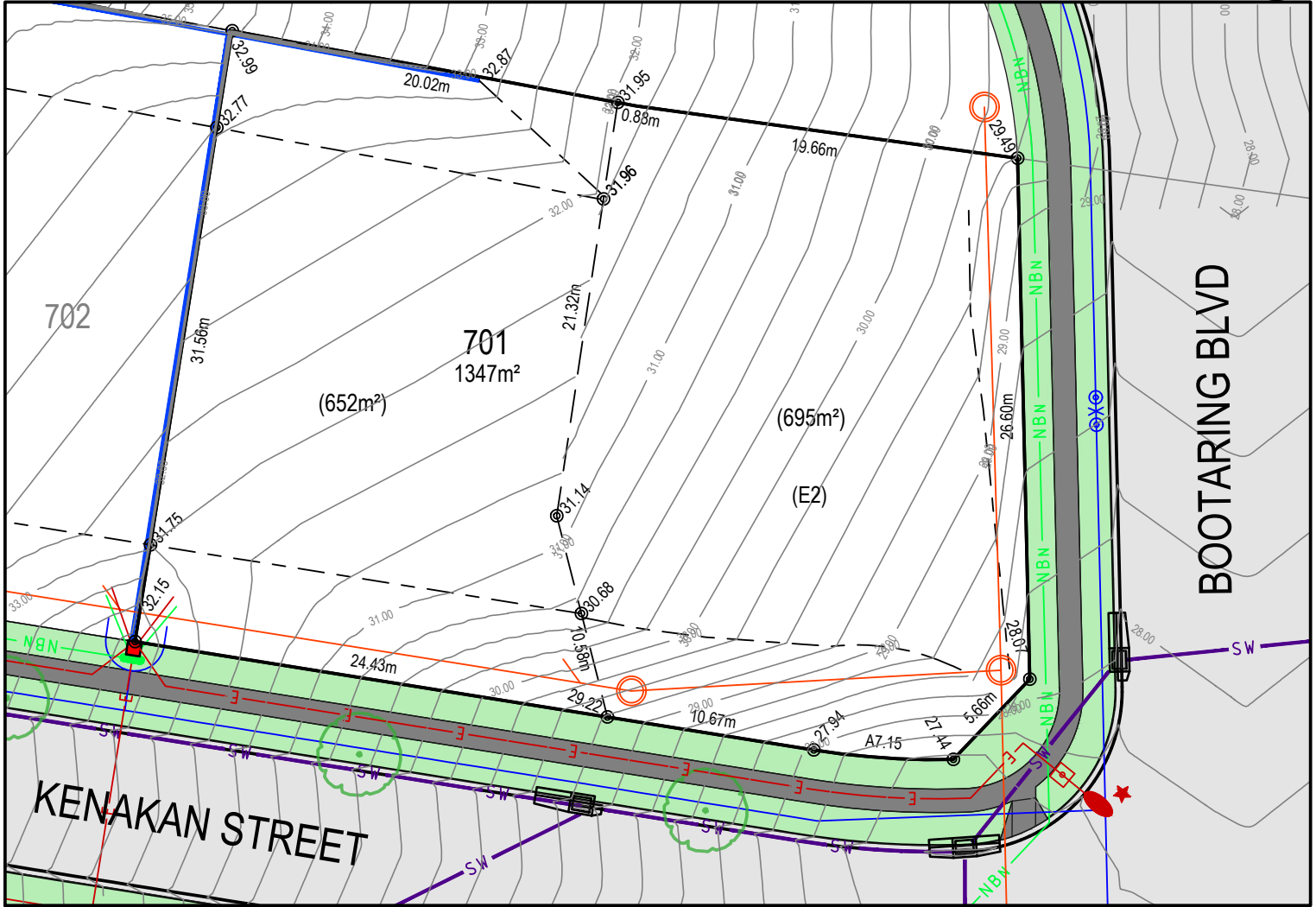
## MASTER PLAN



## STAGE PLAN



## PRELIMINARY SITE ANALYSIS PLAN



- LEGEND:**
- BATTER INTERFACE
  - RETAINING WALL
  - STORMWATER PIT
  - SV — STORMWATER PIPE
  - S — SEWERMAIN
  - SEWER MAINTENANCE STRUCTURE
  - S — SEWER JUNCTION
  - W — WATERMAIN
  - X — HYDRANT, STOP VALVE
  - NBN — TELSTRA / NBN
  - TELSTRA / NBN PIT
  - E — UNDER GROUND POWER
  - ELECTRICITY PILLAR
  - ELECTRICAL EASEMENT
  - LIGHT POLE
  - RESTRICTION ON THE USE OF LAND
  - STREET TREES
  - ASSET PROTECTION ZONE BDY

### DISCLAIMER/ NOTES:

1. Contours are based on finished design levels and are subject to construction and Council certification and therefore should not be considered as final or as-built.
2. Location of utility services including but not limited to power, water, sewer, communications and gas are subject to construction and supply authority certification and therefore should not be considered as final or as-built.
3. Survey information such as boundary dimensions and areas, easements etc are subject to final survey. Purchasers should refer to the deposited plan and 88B instrument contained in the contract for sale of land for further detailed information.
4. Bushfire and geotechnical classification are provided for convenience. Purchasers should refer to referenced detail specialist reports.
5. This preliminary site analysis plan has been collated from various sources of design information and is provided for convenience to assist purchasers in obtaining quotations/ tenders for dwelling construction.
6. This document does not form part of the contract of sale of the land.
7. Anticipated site classification is H2 or better (to be confirmed at completion of construction).

- (M) - EASEMENT TO DRAIN WATER 2 WIDE
- (N) - RESTRICTION ON USE OF LAND 0.9 WIDE
- (P) - EASEMENT FOR CONSTRUCTION AND MAINTENANCE 0.9 WIDE
- (E2) - RESTRICTION ON USE OF LAND 'NO BUILD' ENVELOPE AND VMP
- \* GENERAL RESTRICTION ON USE OF LAND EFFECTS ALL LOTS

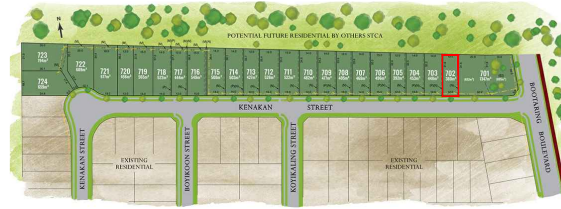
REVISION/S: NSW201403\_STAGE7\_SALES\_REVV  
 DATE: 12 AUGUST 2022  
 BY: ACOR CONSULTANTS PTY LTD

# LOT 702, KENAKAN STREET, EDGEWORTH

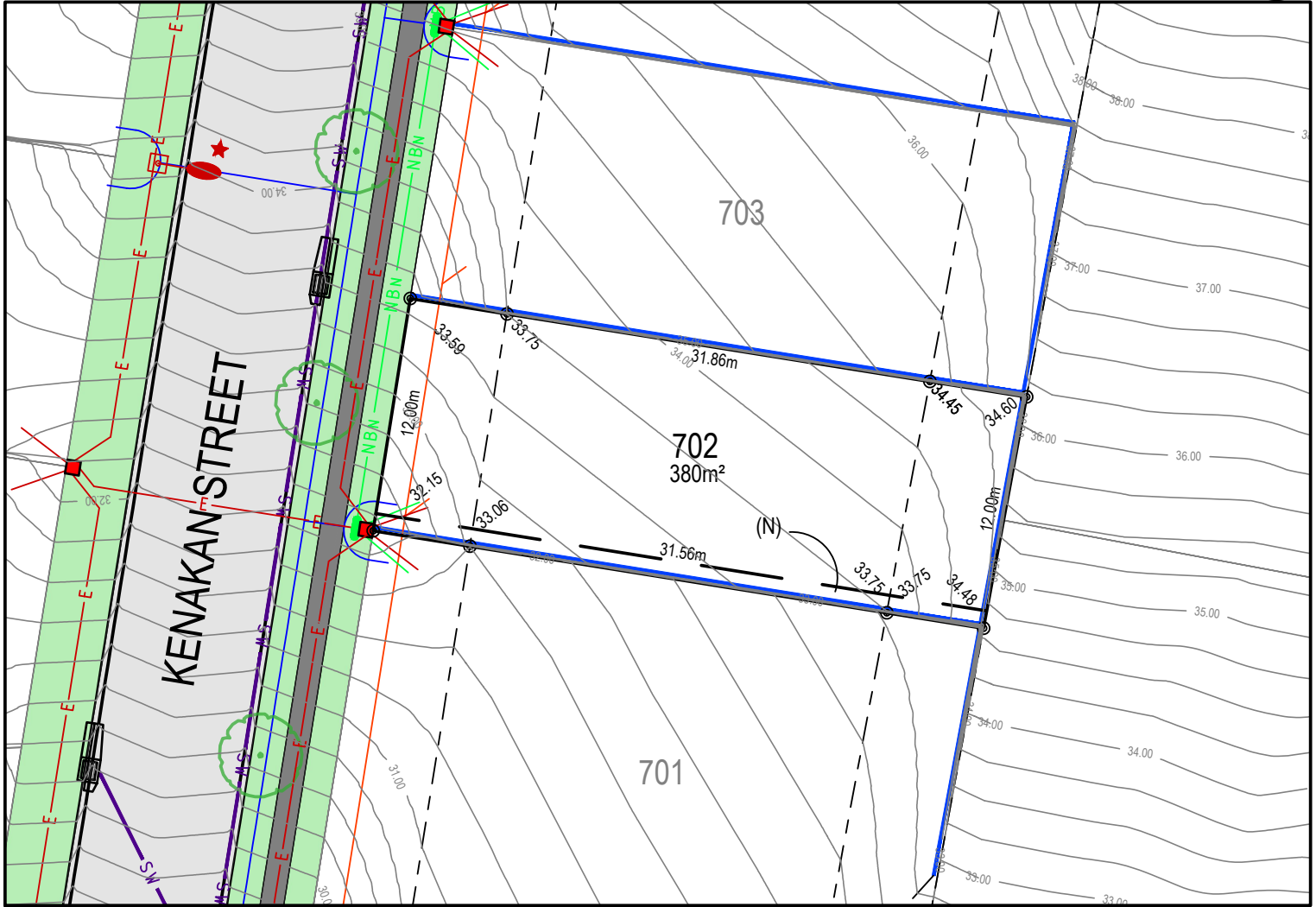
## MASTER PLAN



## STAGE PLAN



## PRELIMINARY SITE ANALYSIS PLAN



- LEGEND:**
- BATTER INTERFACE
  - RETAINING WALL
  - STORMWATER PIT
  - STORMWATER PIPE
  - SEWERMAIN
  - SEWER MAINTENANCE STRUCTURE
  - SEWER JUNCTION
  - WATERMAIN
  - HYDRANT, STOP VALVE
  - TELSTRA / NBN
  - TELSTRA / NBN PIT
  - UNDER GROUND POWER
  - ELECTRICITY PILLAR
  - ELECTRICAL EASEMENT
  - LIGHT POLE
  - RESTRICTION ON THE USE OF LAND
  - STREET TREES
  - ASSET PROTECTION ZONE BDY

### DISCLAIMER/ NOTES:

1. Contours are based on finished design levels and are subject to construction and Council certification and therefore should not be considered as final or as-built.
2. Location of utility services including but not limited to power, water, sewer, communications and gas are subject to construction and supply authority certification and therefore should not be considered as final or as-built.
3. Survey information such as boundary dimensions and areas, easements etc are subject to final survey. Purchasers should refer to the deposited plan and 88B instrument contained in the contract for sale of land for further detailed information.
4. Bushfire and geotechnical classification are provided for convenience. Purchasers should refer to referenced detail specialist reports.
5. This preliminary site analysis plan has been collated from various sources of design information and is provided for convenience to assist purchasers in obtaining quotations/ tenders for dwelling construction.
6. This document does not form part of the contract of sale of the land.
7. Anticipated site classification is H2 or better (to be confirmed at completion of construction).

- (M) - EASEMENT TO DRAIN WATER 2 WIDE
- (N) - RESTRICTION ON USE OF LAND 0.9 WIDE
- (P) - EASEMENT FOR CONSTRUCTION AND MAINTENANCE 0.9 WIDE
- (E2) - RESTRICTION ON USE OF LAND 'NO BUILD' ENVELOPE AND VMP
- \* GENERAL RESTRICTION ON USE OF LAND EFFECTS ALL LOTS

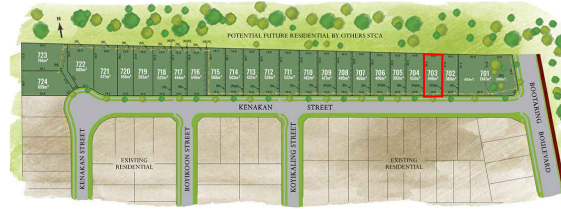
REVISION/S: NSW201403\_STAGE7\_SALES\_REV6  
 DATE: 12 AUGUST 2022  
 BY: ACOR CONSULTANTS PTY LTD

# LOT 703, KENAKAN STREET, EDGEWORTH

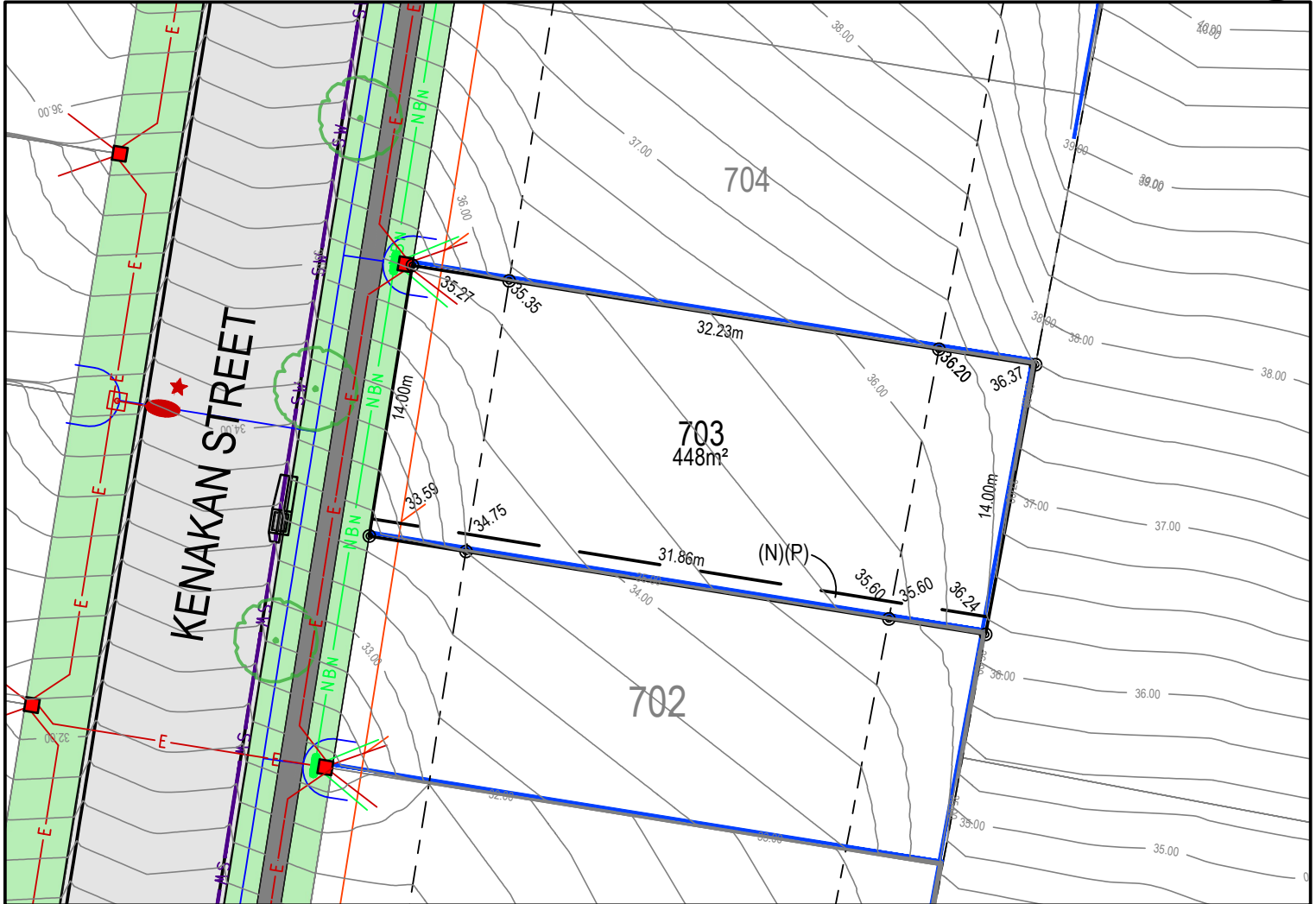
## MASTER PLAN



## STAGE PLAN



## PRELIMINARY SITE ANALYSIS PLAN



**LEGEND:**

	BATTER INTERFACE
	RETAINING WALL
	STORMWATER PIT
	STORMWATER PIPE
	SEWERMAIN
	SEWER MAINTENANCE STRUCTURE
	SEWER JUNCTION
	WATERMAIN
	HYDRANT, STOP VALVE
	TELSTRA / NBN
	TELSTRA / NBN PIT
	UNDER GROUND POWER
	ELECTRICITY PILLAR
	ELECTRICAL EASEMENT
	LIGHT POLE
	RESTRICTION ON THE USE OF LAND
	STREET TREES
	ASSET PROTECTION ZONE BDY

### DISCLAIMER/ NOTES:

- Contours are based on finished design levels and are subject to construction and Council certification and therefore should not be considered as final or as-built.
- Location of utility services including but not limited to power, water, sewer, communications and gas are subject to construction and supply authority certification and therefore should not be considered as final or as-built.
- Survey information such as boundary dimensions and areas, easements etc are subject to final survey. Purchasers should refer to the deposited plan and 88B instrument contained in the contract for sale of land for further detailed information.
- Bushfire and geotechnical classification are provided for convenience. Purchasers should refer to referenced detail specialist reports.
- This preliminary site analysis plan has been collated from various sources of design information and is provided for convenience to assist purchasers in obtaining quotations/ tenders for dwelling construction.
- This document does not form part of the contract of sale of the land.
- Anticipated site classification is H2 or better (to be confirmed at completion of construction).

- (M) - EASEMENT TO DRAIN WATER 2 WIDE  
 (N) - RESTRICTION ON USE OF LAND 0.9 WIDE  
 (P) - EASEMENT FOR CONSTRUCTION AND MAINTENANCE 0.9 WIDE  
 (E2) - RESTRICTION ON USE OF LAND 'NO BUILD' ENVELOPE AND VMP  
 \* GENERAL RESTRICTION ON USE OF LAND EFFECTS ALL LOTS

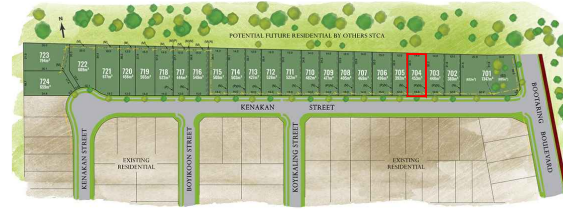
REVISION/S: NSW201403\_STAGE7\_SALES\_REVV  
 DATE: 12 AUGUST 2022  
 BY: ACOR CONSULTANTS PTY LTD

# LOT 704, KENAKAN STREET, EDGEWORTH

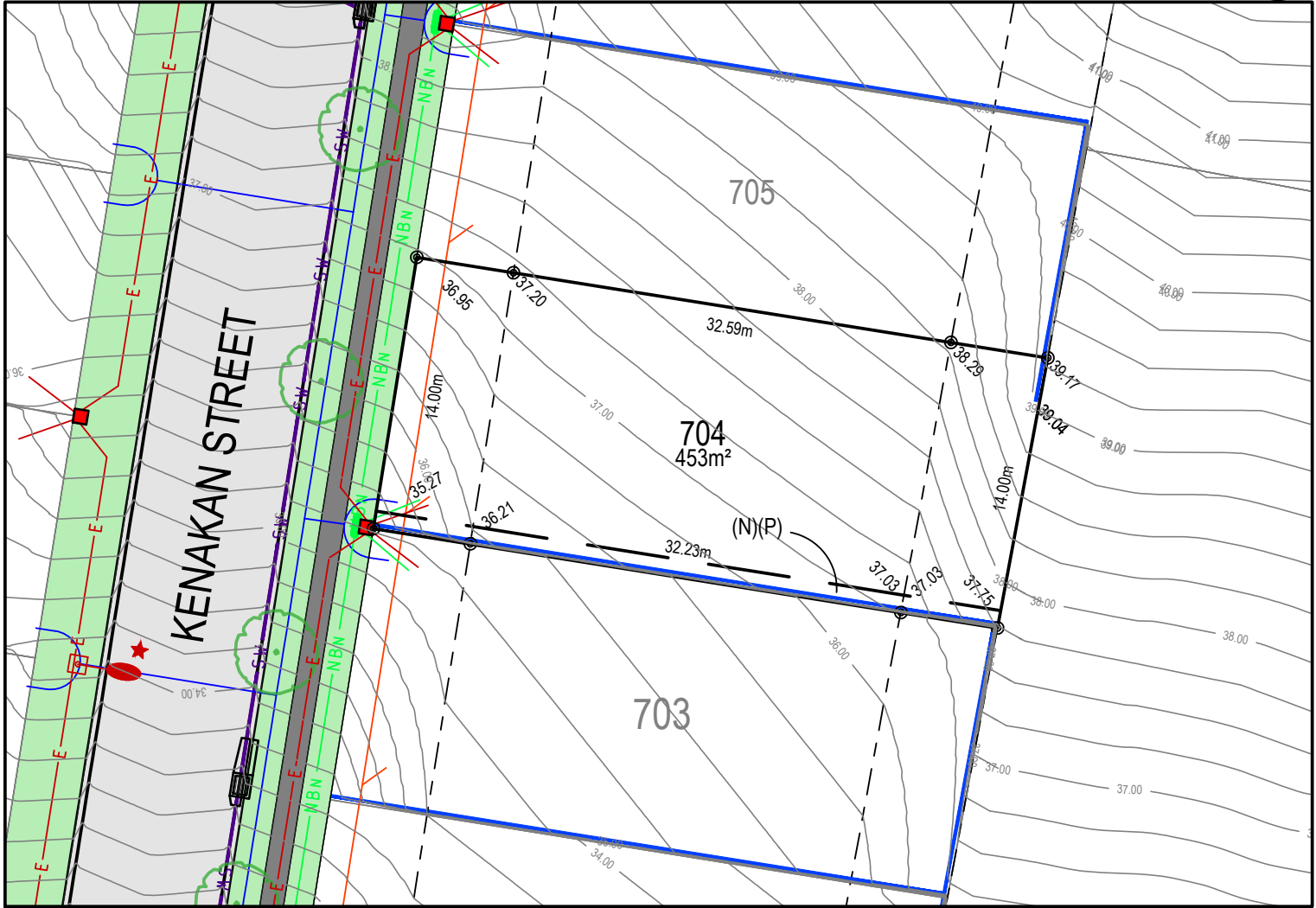
## MASTER PLAN



## STAGE PLAN



## PRELIMINARY SITE ANALYSIS PLAN



- LEGEND:**
- BATTER INTERFACE
  - RETAINING WALL
  - STORMWATER PIT
  - SV — STORMWATER PIPE
  - S — SEWERMAIN
  - SEWER MAINTENANCE STRUCTURE
  - S — SEWER JUNCTION
  - W — WATERMAIN
  - X — HYDRANT, STOP VALVE
  - NBN — TELSTRA / NBN
  - TELSTRA / NBN PIT
  - E — UNDER GROUND POWER
  - ELECTRICITY PILLAR
  - ELECTRICAL EASEMENT
  - LIGHT POLE
  - RESTRICTION ON THE USE OF LAND
  - STREET TREES
  - ASSET PROTECTION ZONE BDY

### DISCLAIMER/ NOTES:

1. Contours are based on finished design levels and are subject to construction and Council certification and therefore should not be considered as final or as-built.
2. Location of utility services including but not limited to power, water, sewer, communications and gas are subject to construction and supply authority certification and therefore should not be considered as final or as-built.
3. Survey information such as boundary dimensions and areas, easements etc are subject to final survey. Purchasers should refer to the deposited plan and 88B instrument contained in the contract for sale of land for further detailed information.
4. Bushfire and geotechnical classification are provided for convenience. Purchasers should refer to referenced detail specialist reports.
5. This preliminary site analysis plan has been collated from various sources of design information and is provided for convenience to assist purchasers in obtaining quotations/ tenders for dwelling construction.
6. This document does not form part of the contract of sale of the land.
7. Anticipated site classification is H2 or better (to be confirmed at completion of construction).

- (M) - EASEMENT TO DRAIN WATER 2 WIDE
- (N) - RESTRICTION ON USE OF LAND 0.9 WIDE
- (P) - EASEMENT FOR CONSTRUCTION AND MAINTENANCE 0.9 WIDE
- (E2) - RESTRICTION ON USE OF LAND 'NO BUILD' ENVELOPE AND VMP
- \* GENERAL RESTRICTION ON USE OF LAND EFFECTS ALL LOTS

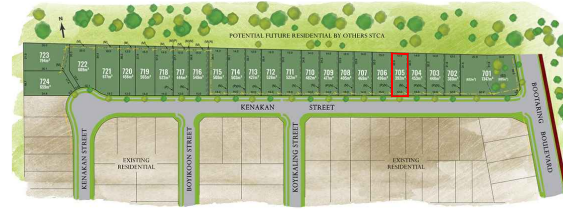
REVISION/S: NSW201403\_STAGE7\_SALES\_REVV  
 DATE: 12 AUGUST 2022  
 BY: ACOR CONSULTANTS PTY LTD

# LOT 705, KENAKAN STREET, EDGEWORTH

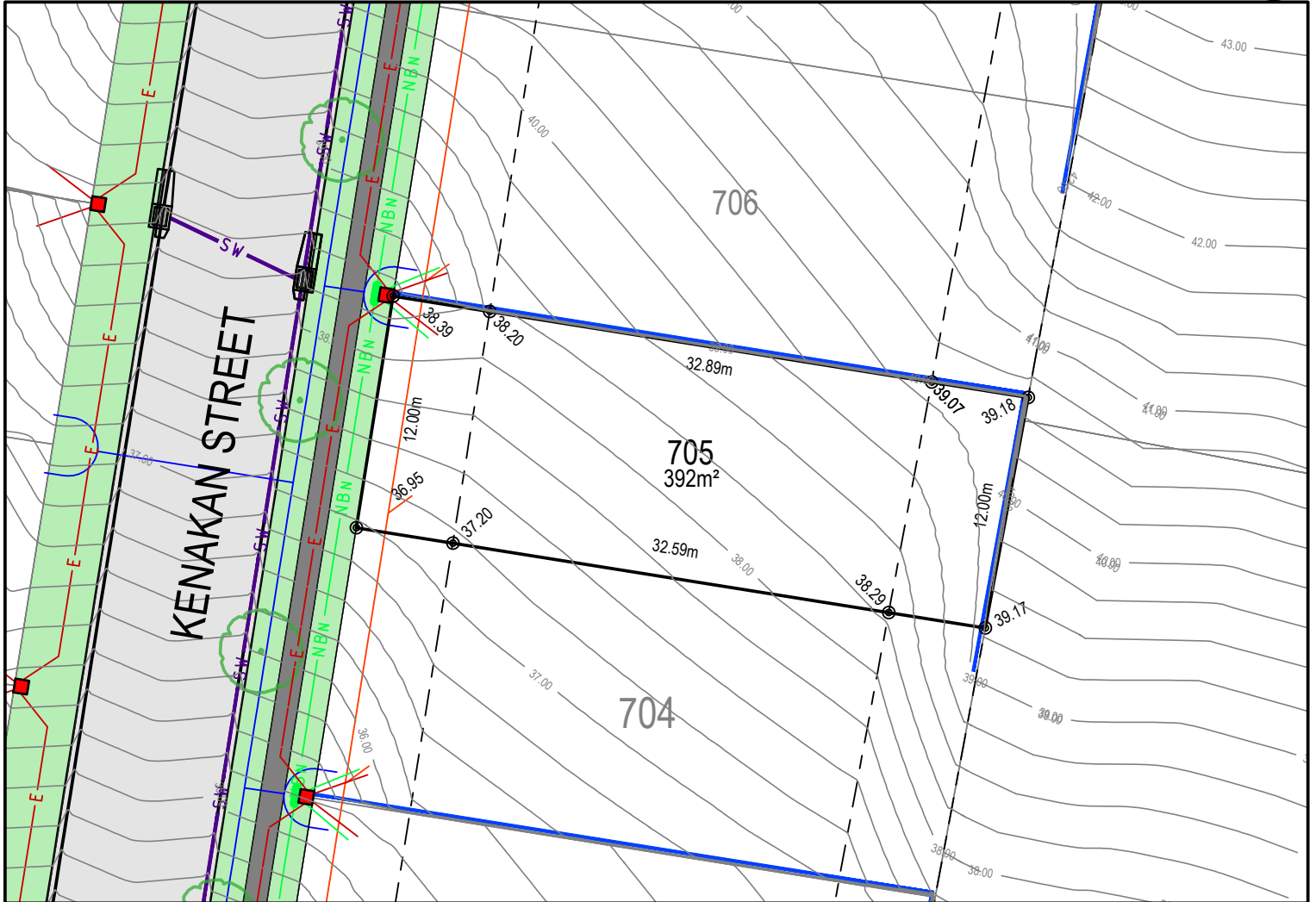
## MASTER PLAN



## STAGE PLAN



## PRELIMINARY SITE ANALYSIS PLAN



- LEGEND:**
- BATTER INTERFACE
  - RETAINING WALL
  - STORMWATER PIT
  - SV --- STORMWATER PIPE
  - S --- SEWERMAIN
  - O --- SEWER MAINTENANCE STRUCTURE
  - S --- SEWER JUNCTION
  - W --- WATERMAIN
  - O X --- HYDRANT, STOP VALVE
  - NBN --- TELSTRA / NBN
  - TELSTRA / NBN PIT
  - E --- UNDER GROUND POWER
  - E --- ELECTRICITY PILLAR
  - ELECTRICAL EASEMENT
  - LIGHT POLE
  - RESTRICTION ON THE USE OF LAND
  - STREET TREES
  - ASSET PROTECTION ZONE BDY

### DISCLAIMER/ NOTES:

1. Contours are based on finished design levels and are subject to construction and Council certification and therefore should not be considered as final or as-built.
2. Location of utility services including but not limited to power, water, sewer, communications and gas are subject to construction and supply authority certification and therefore should not be considered as final or as-built.
3. Survey information such as boundary dimensions and areas, easements etc are subject to final survey. Purchasers should refer to the deposited plan and 88B instrument contained in the contract for sale of land for further detailed information.
4. Bushfire and geotechnical classification are provided for convenience. Purchasers should refer to referenced detail specialist reports.
5. This preliminary site analysis plan has been collated from various sources of design information and is provided for convenience to assist purchasers in obtaining quotations/ tenders for dwelling construction.
6. This document does not form part of the contract of sale of the land.
7. Anticipated site classification is H2 or better (to be confirmed at completion of construction).

- (M) - EASEMENT TO DRAIN WATER 2 WIDE
- (N) - RESTRICTION ON USE OF LAND 0.9 WIDE
- (P) - EASEMENT FOR CONSTRUCTION AND MAINTENANCE 0.9 WIDE
- (E2) - RESTRICTION ON USE OF LAND 'NO BUILD' ENVELOPE AND VMP
- \* GENERAL RESTRICTION ON USE OF LAND EFFECTS ALL LOTS

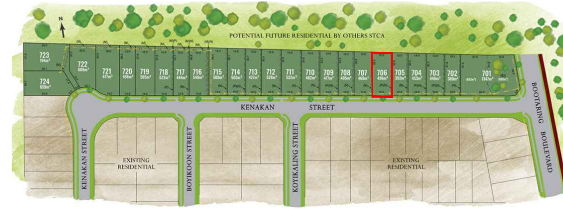
REVISION/S: NSW201403\_STAGE7\_SALES\_REVV  
 DATE: 12 AUGUST 2022  
 BY: ACOR CONSULTANTS PTY LTD

# LOT 706, KENAKAN STREET, EDGEWORTH

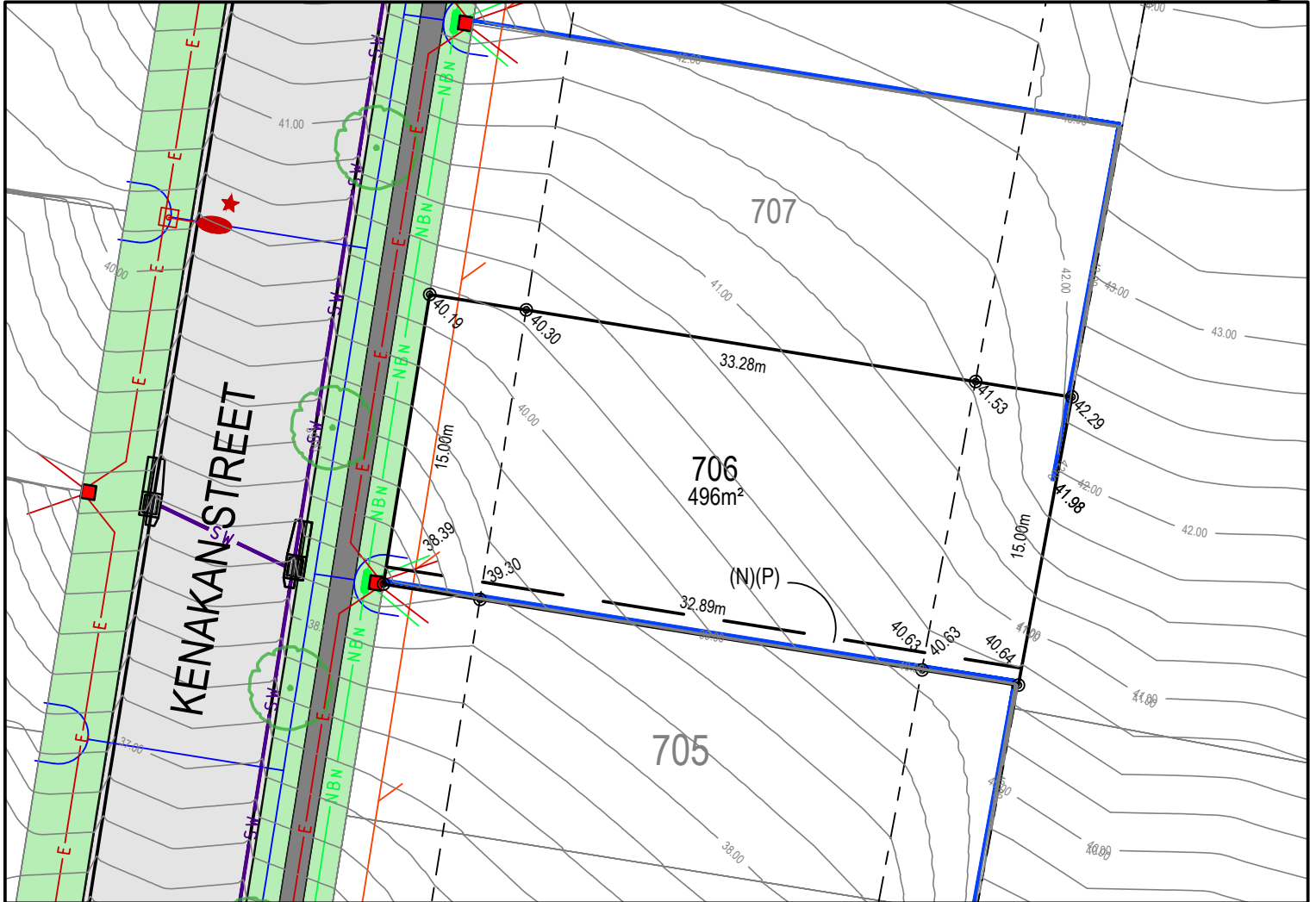
## MASTER PLAN



## STAGE PLAN



## PRELIMINARY SITE ANALYSIS PLAN



- LEGEND:**
- BATTER INTERFACE
  - RETAINING WALL
  - STORMWATER PIT
  - STORMWATER PIPE
  - SEWERMAIN
  - SEWER MAINTENANCE STRUCTURE
  - SEWER JUNCTION
  - WATERMAIN
  - HYDRANT, STOP VALVE
  - TELSTRA / NBN
  - TELSTRA / NBN PIT
  - UNDER GROUND POWER
  - ELECTRICITY PILLAR
  - ELECTRICAL EASEMENT
  - LIGHT POLE
  - RESTRICTION ON THE USE OF LAND
  - STREET TREES
  - ASSET PROTECTION ZONE BDY

### DISCLAIMER/ NOTES:

1. Contours are based on finished design levels and are subject to construction and Council certification and therefore should not be considered as final or as-built.
2. Location of utility services including but not limited to power, water, sewer, communications and gas are subject to construction and supply authority certification and therefore should not be considered as final or as-built.
3. Survey information such as boundary dimensions and areas, easements etc are subject to final survey. Purchasers should refer to the deposited plan and 88B instrument contained in the contract for sale of land for further detailed information.
4. Bushfire and geotechnical classification are provided for convenience. Purchasers should refer to referenced detail specialist reports.
5. This preliminary site analysis plan has been collated from various sources of design information and is provided for convenience to assist purchasers in obtaining quotations/ tenders for dwelling construction.
6. This document does not form part of the contract of sale of the land.
7. Anticipated site classification is H2 or better (to be confirmed at completion of construction).

- (M) - EASEMENT TO DRAIN WATER 2 WIDE
- (N) - RESTRICTION ON USE OF LAND 0.9 WIDE
- (P) - EASEMENT FOR CONSTRUCTION AND MAINTENANCE 0.9 WIDE
- (E2) - RESTRICTION ON USE OF LAND 'NO BUILD' ENVELOPE AND VMP
- \* GENERAL RESTRICTION ON USE OF LAND EFFECTS ALL LOTS

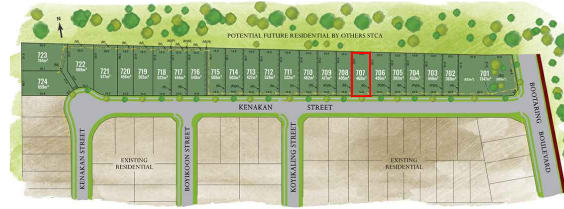
REVISION/S: NSW201403\_STAGE7\_SALES\_REV6  
 DATE: 12 AUGUST 2022  
 BY: ACOR CONSULTANTS PTY LTD

# LOT 707, KENAKAN STREET, EDGEWORTH

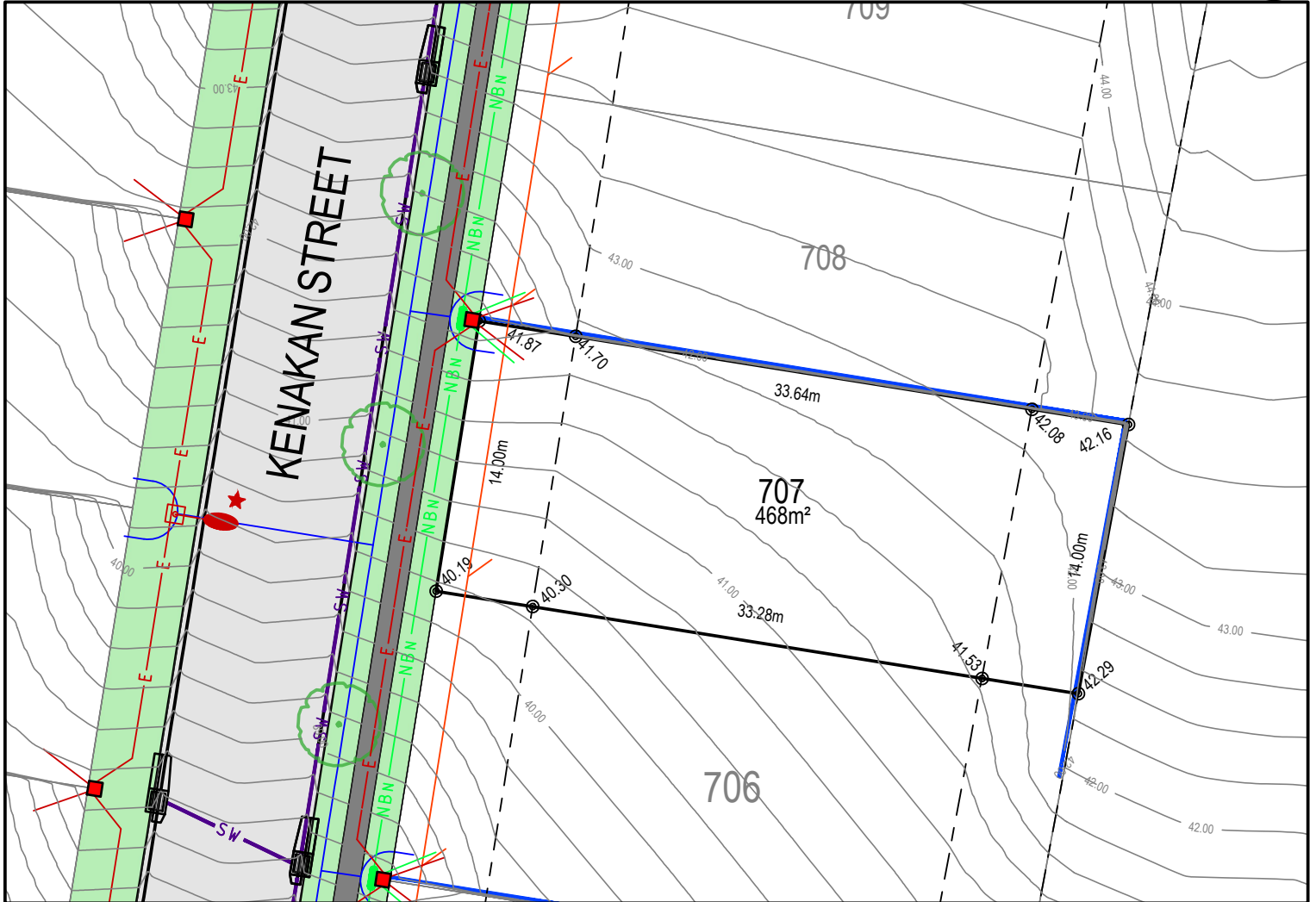
## MASTER PLAN



## STAGE PLAN



## PRELIMINARY SITE ANALYSIS PLAN



- LEGEND:**
- BATTER INTERFACE
  - RETAINING WALL
  - STORMWATER PIT
  - SV— STORMWATER PIPE
  - S— SEWERMAIN
  - SEWER MAINTENANCE STRUCTURE
  - S— SEWER JUNCTION
  - W— WATERMAIN
  - X HYDRANT, STOP VALVE
  - NBN— TELSTRA / NBN
  - TELSTRA / NBN PIT
  - E— UNDER GROUND POWER
  - ELECTRICITY PILLAR
  - ELECTRICAL EASEMENT
  - LIGHT POLE
  - RESTRICTION ON THE USE OF LAND
  - STREET TREES
  - ASSET PROTECTION ZONE BDY

### DISCLAIMER/ NOTES:

1. Contours are based on finished design levels and are subject to construction and Council certification and therefore should not be considered as final or as-built.
2. Location of utility services including but not limited to power, water, sewer, communications and gas are subject to construction and supply authority certification and therefore should not be considered as final or as-built.
3. Survey information such as boundary dimensions and areas, easements etc are subject to final survey. Purchasers should refer to the deposited plan and 88B instrument contained in the contract for sale of land for further detailed information.
4. Bushfire and geotechnical classification are provided for convenience. Purchasers should refer to referenced detail specialist reports.
5. This preliminary site analysis plan has been collated from various sources of design information and is provided for convenience to assist purchasers in obtaining quotations/ tenders for dwelling construction.
6. This document does not form part of the contract of sale of the land.
7. Anticipated site classification is H2 or better (to be confirmed at completion of construction).

- (M) - EASEMENT TO DRAIN WATER 2 WIDE
- (N) - RESTRICTION ON USE OF LAND 0.9 WIDE
- (P) - EASEMENT FOR CONSTRUCTION AND MAINTENANCE 0.9 WIDE
- (E2) - RESTRICTION ON USE OF LAND 'NO BUILD' ENVELOPE AND VMP
- \* GENERAL RESTRICTION ON USE OF LAND EFFECTS ALL LOTS

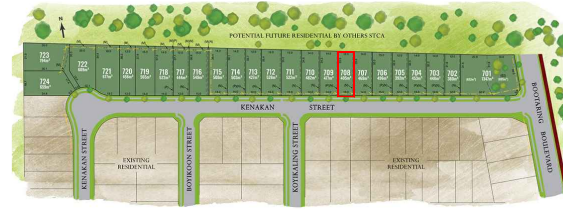
REVISION/S: NSW201403\_STAGE7\_SALES\_REV6  
 DATE: 12 AUGUST 2022  
 BY: ACOR CONSULTANTS PTY LTD

# LOT 708, KENAKAN STREET, EDGEWORTH

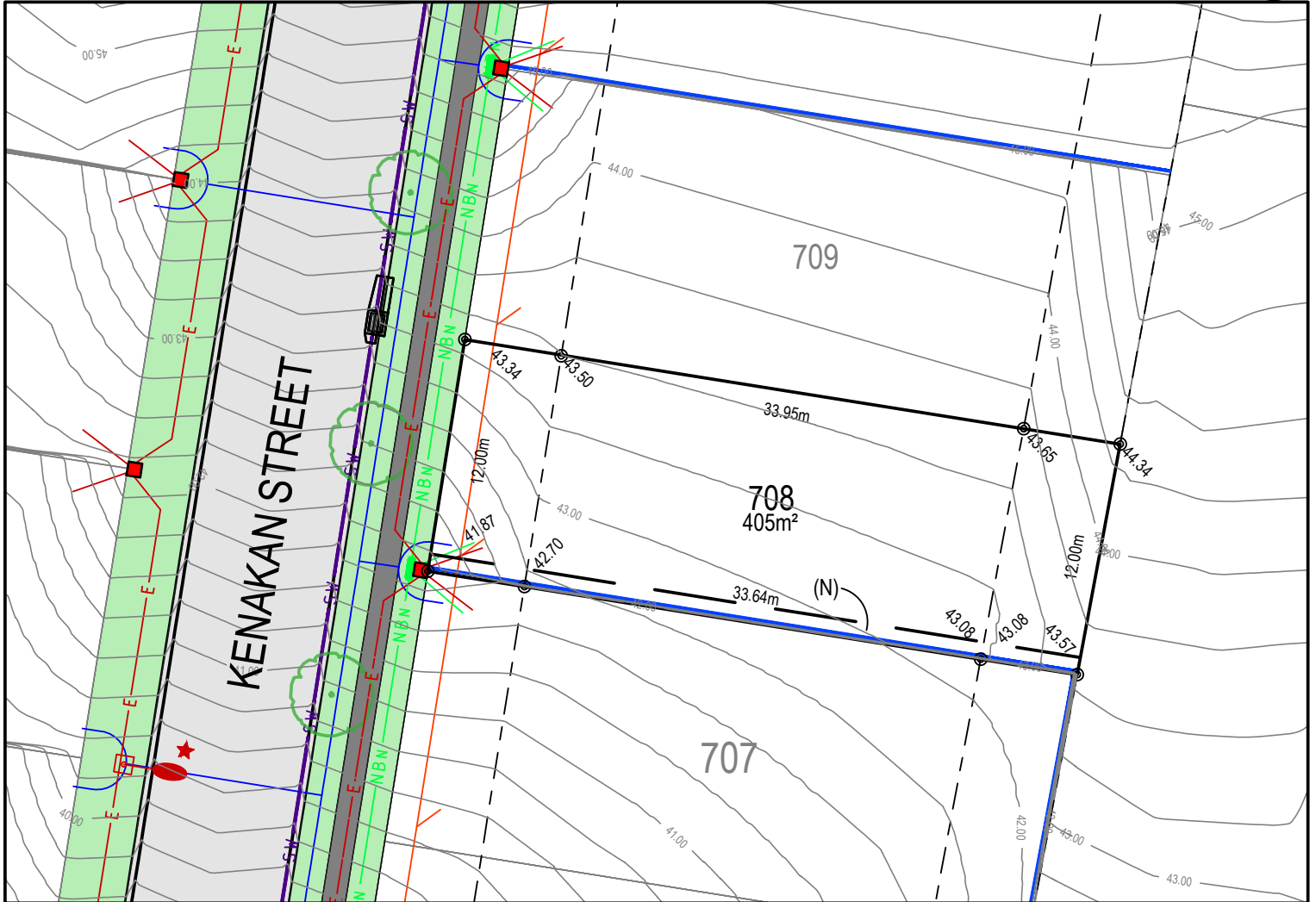
## MASTER PLAN



## STAGE PLAN



## PRELIMINARY SITE ANALYSIS PLAN



- LEGEND:**
- BATTER INTERFACE
  - RETAINING WALL
  - STORMWATER PIT
  - SV — STORMWATER PIPE
  - S — SEWERMAIN
  - SEWER MAINTENANCE STRUCTURE
  - S — SEWER JUNCTION
  - W — WATERMAIN
  - X — HYDRANT, STOP VALVE
  - NBN — TELSTRA / NBN
  - TELSTRA / NBN PIT
  - E — UNDER GROUND POWER
  - ELECTRICITY PILLAR
  - ELECTRICAL EASEMENT
  - LIGHT POLE
  - RESTRICTION ON THE USE OF LAND
  - STREET TREES
  - ASSET PROTECTION ZONE BDY

### DISCLAIMER/ NOTES:

1. Contours are based on finished design levels and are subject to construction and Council certification and therefore should not be considered as final or as-built.
2. Location of utility services including but not limited to power, water, sewer, communications and gas are subject to construction and supply authority certification and therefore should not be considered as final or as-built.
3. Survey information such as boundary dimensions and areas, easements etc are subject to final survey. Purchasers should refer to the deposited plan and 88B instrument contained in the contract for sale of land for further detailed information.
4. Bushfire and geotechnical classification are provided for convenience. Purchasers should refer to referenced detail specialist reports.
5. This preliminary site analysis plan has been collated from various sources of design information and is provided for convenience to assist purchasers in obtaining quotations/ tenders for dwelling construction.
6. This document does not form part of the contract of sale of the land.
7. Anticipated site classification is H2 or better (to be confirmed at completion of construction).

- (M) - EASEMENT TO DRAIN WATER 2 WIDE
- (N) - RESTRICTION ON USE OF LAND 0.9 WIDE
- (P) - EASEMENT FOR CONSTRUCTION AND MAINTENANCE 0.9 WIDE
- (E2) - RESTRICTION ON USE OF LAND 'NO BUILD' ENVELOPE AND VMP
- \* GENERAL RESTRICTION ON USE OF LAND EFFECTS ALL LOTS

REVISION/S: NSW201403\_STAGE7\_SALES\_REV6  
 DATE: 12 AUGUST 2022  
 BY: ACOR CONSULTANTS PTY LTD

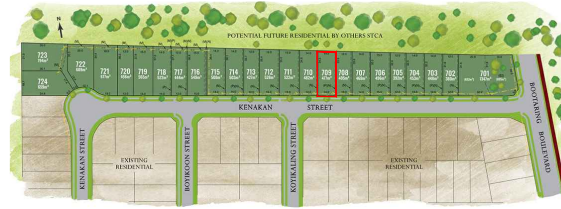


# LOT 709, KENAKAN STREET, EDGEWORTH

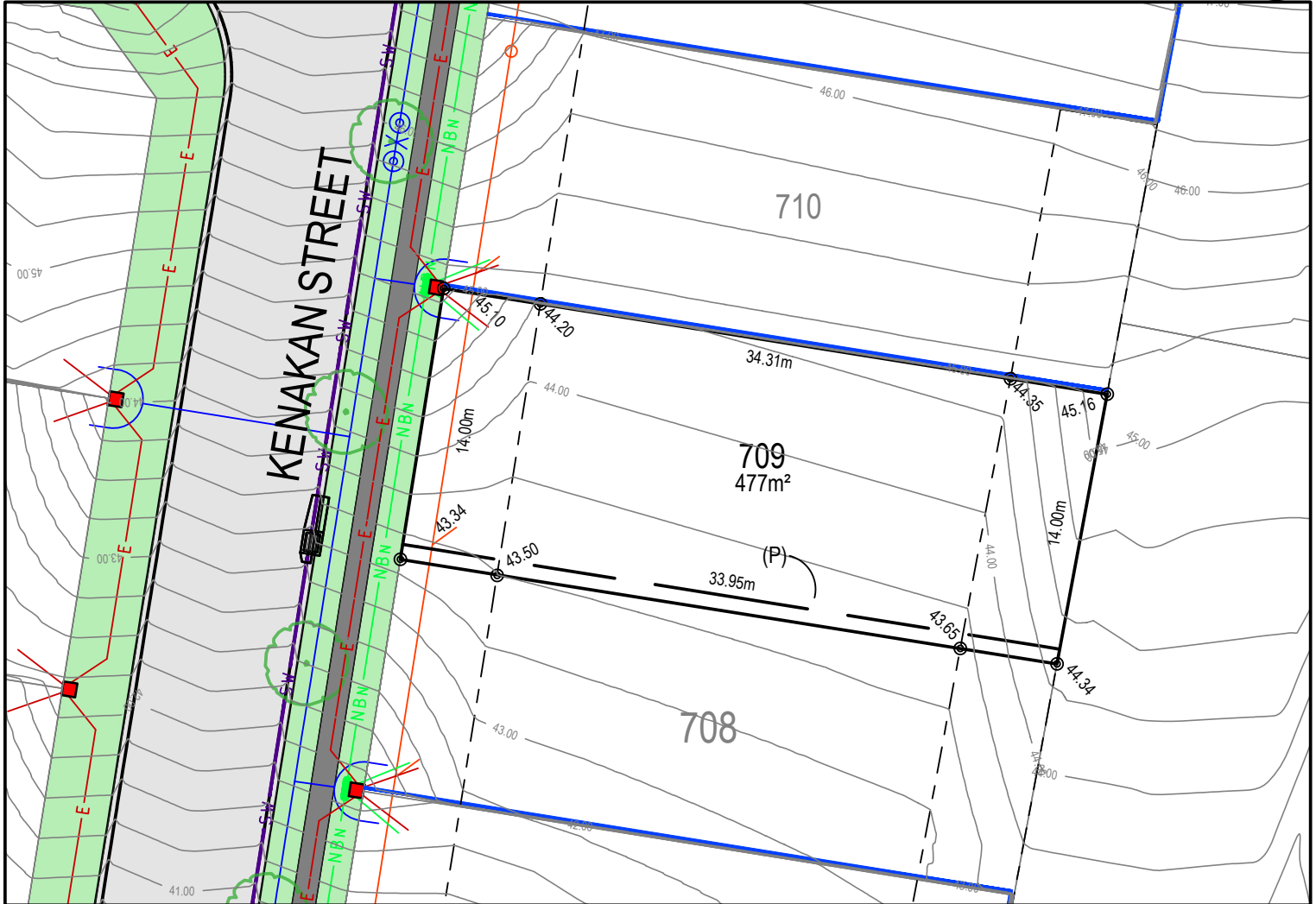
## MASTER PLAN



## STAGE PLAN



## PRELIMINARY SITE ANALYSIS PLAN



- LEGEND:**
- BATTER INTERFACE
  - RETAINING WALL
  - STORMWATER PIT
  - SV— STORMWATER PIPE
  - S— SEWERMAIN
  - SEWER MAINTENANCE STRUCTURE
  - S— SEWER JUNCTION
  - W— WATERMAIN
  - X HYDRANT, STOP VALVE
  - NBN— TELSTRA / NBN
  - TELSTRA / NBN PIT
  - E— UNDER GROUND POWER
  - ELECTRICITY PILLAR
  - ELECTRICAL EASEMENT
  - LIGHT POLE
  - RESTRICTION ON THE USE OF LAND
  - STREET TREES
  - ASSET PROTECTION ZONE BDY

### DISCLAIMER/ NOTES:

1. Contours are based on finished design levels and are subject to construction and Council certification and therefore should not be considered as final or as-built.
2. Location of utility services including but not limited to power, water, sewer, communications and gas are subject to construction and supply authority certification and therefore should not be considered as final or as-built.
3. Survey information such as boundary dimensions and areas, easements etc are subject to final survey. Purchasers should refer to the deposited plan and 88B instrument contained in the contract for sale of land for further detailed information.
4. Bushfire and geotechnical classification are provided for convenience. Purchasers should refer to referenced detail specialist reports.
5. This preliminary site analysis plan has been collated from various sources of design information and is provided for convenience to assist purchasers in obtaining quotations/ tenders for dwelling construction.
6. This document does not form part of the contract of sale of the land.
7. Anticipated site classification is H2 or better (to be confirmed at completion of construction).

- (M) - EASEMENT TO DRAIN WATER 2 WIDE
- (N) - RESTRICTION ON USE OF LAND 0.9 WIDE
- (P) - EASEMENT FOR CONSTRUCTION AND MAINTENANCE 0.9 WIDE
- (E2) - RESTRICTION ON USE OF LAND 'NO BUILD' ENVELOPE AND VMP
- \* GENERAL RESTRICTION ON USE OF LAND EFFECTS ALL LOTS

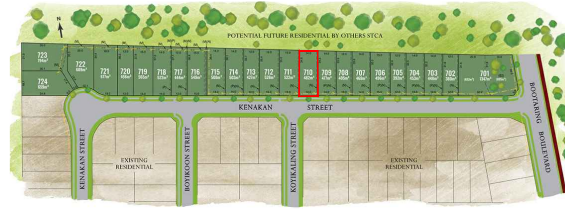
REVISION/S: NSW201403\_STAGE7\_SALES\_REV6  
 DATE: 12 AUGUST 2022  
 BY: ACOR CONSULTANTS PTY LTD

# LOT 710, KENAKAN STREET, EDGEWORTH

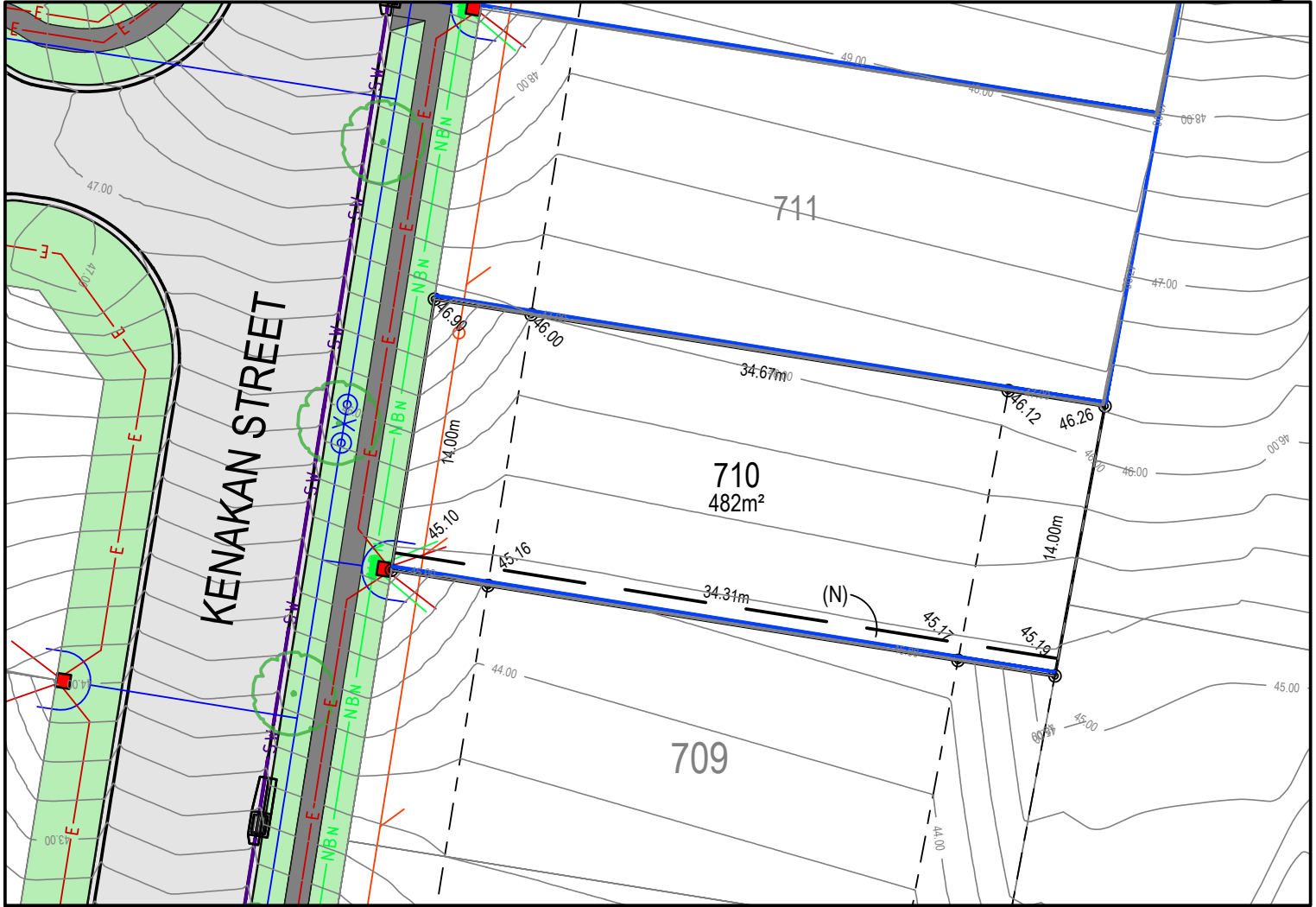
## MASTER PLAN



## STAGE PLAN



## PRELIMINARY SITE ANALYSIS PLAN



- LEGEND:**
- BATTER INTERFACE
  - RETAINING WALL
  - STORMWATER PIT
  - SV — STORMWATER PIPE
  - S — SEWERMAIN
  - SEWER MAINTENANCE STRUCTURE
  - S — SEWER JUNCTION
  - W — WATERMAIN
  - X — HYDRANT, STOP VALVE
  - NBN — TELSTRA / NBN
  - TELSTRA / NBN PIT
  - E — UNDER GROUND POWER
  - ELECTRICITY PILLAR
  - ELECTRICAL EASEMENT
  - LIGHT POLE
  - RESTRICTION ON THE USE OF LAND
  - STREET TREES
  - ASSET PROTECTION ZONE BDY

### DISCLAIMER/ NOTES:

1. Contours are based on finished design levels and are subject to construction and Council certification and therefore should not be considered as final or as-built.
2. Location of utility services including but not limited to power, water, sewer, communications and gas are subject to construction and supply authority certification and therefore should not be considered as final or as-built.
3. Survey information such as boundary dimensions and areas, easements etc are subject to final survey. Purchasers should refer to the deposited plan and 88B instrument contained in the contract for sale of land for further detailed information.
4. Bushfire and geotechnical classification are provided for convenience. Purchasers should refer to referenced detail specialist reports.
5. This preliminary site analysis plan has been collated from various sources of design information and is provided for convenience to assist purchasers in obtaining quotations/ tenders for dwelling construction.
6. This document does not form part of the contract of sale of the land.
7. Anticipated site classification is H2 or better (to be confirmed at completion of construction).

- (M) - EASEMENT TO DRAIN WATER 2 WIDE
- (N) - RESTRICTION ON USE OF LAND 0.9 WIDE
- (P) - EASEMENT FOR CONSTRUCTION AND MAINTENANCE 0.9 WIDE
- (E2) - RESTRICTION ON USE OF LAND 'NO BUILD' ENVELOPE AND VMP
- \* GENERAL RESTRICTION ON USE OF LAND EFFECTS ALL LOTS

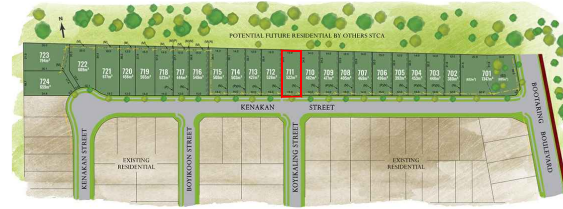
REVISION/S: NSW201403\_STAGE7\_SALES\_REV6  
 DATE: 12 AUGUST 2022  
 BY: ACOR CONSULTANTS PTY LTD

# LOT 711, KENAKAN STREET, EDGEWORTH

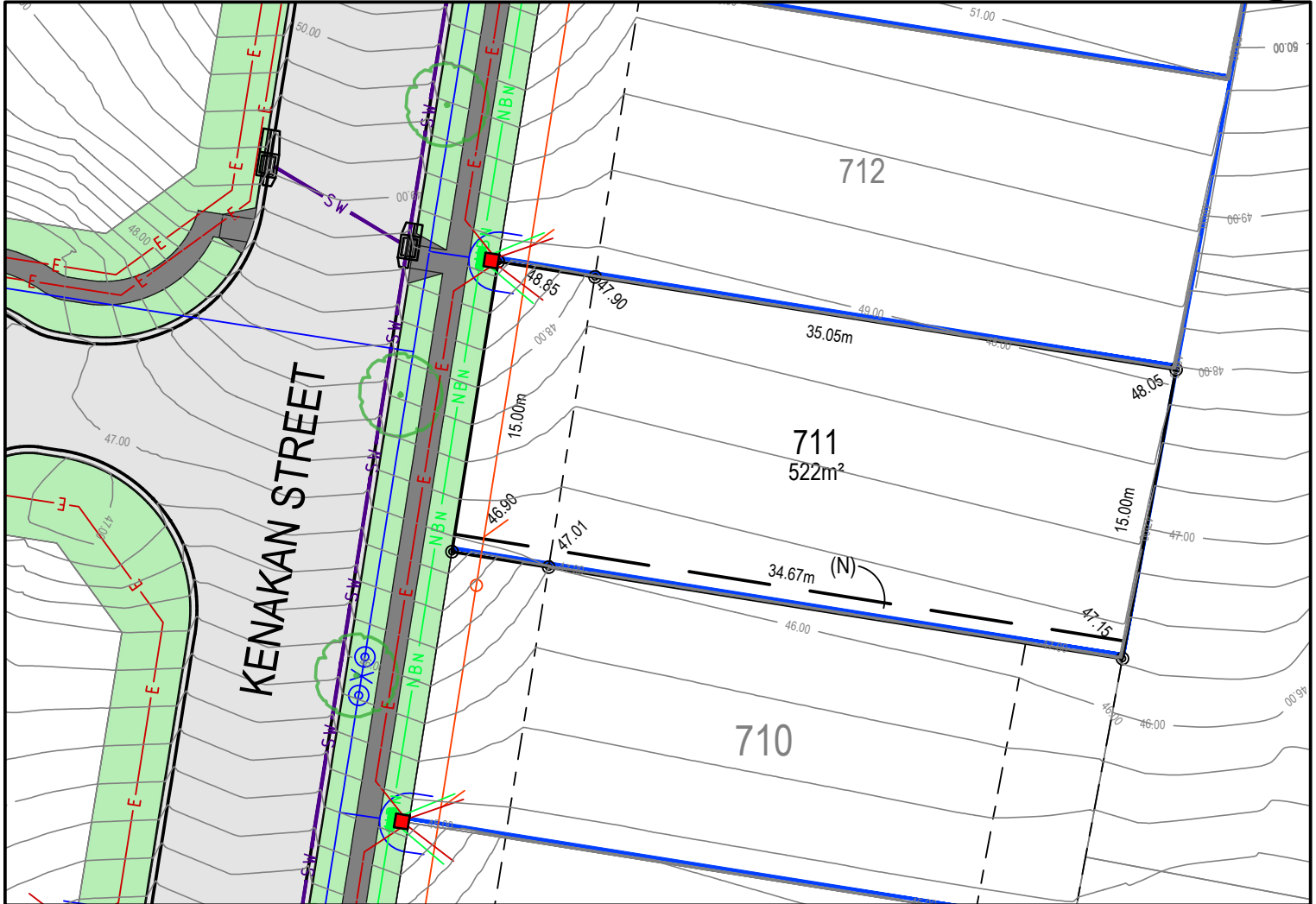
## MASTER PLAN



## STAGE PLAN



## PRELIMINARY SITE ANALYSIS PLAN



- LEGEND:**
- BATTER INTERFACE
  - RETAINING WALL
  - STORMWATER PIT
  - SV — STORMWATER PIPE
  - S — SEWERMAIN
  - SEWER MAINTENANCE STRUCTURE
  - S — SEWER JUNCTION
  - W — WATERMAIN
  - X — HYDRANT, STOP VALVE
  - NBN — TELSTRA / NBN
  - TELSTRA / NBN PIT
  - E — UNDER GROUND POWER
  - ELECTRICITY PILLAR
  - ELECTRICAL EASEMENT
  - LIGHT POLE
  - RESTRICTION ON THE USE OF LAND
  - STREET TREES
  - ASSET PROTECTION ZONE BDY

### DISCLAIMER/ NOTES:

1. Contours are based on finished design levels and are subject to construction and Council certification and therefore should not be considered as final or as-built.
2. Location of utility services including but not limited to power, water, sewer, communications and gas are subject to construction and supply authority certification and therefore should not be considered as final or as-built.
3. Survey information such as boundary dimensions and areas, easements etc are subject to final survey. Purchasers should refer to the deposited plan and 88B instrument contained in the contract for sale of land for further detailed information.
4. Bushfire and geotechnical classification are provided for convenience. Purchasers should refer to referenced detail specialist reports.
5. This preliminary site analysis plan has been collated from various sources of design information and is provided for convenience to assist purchasers in obtaining quotations/ tenders for dwelling construction.
6. This document does not form part of the contract of sale of the land.
7. Anticipated site classification is H2 or better (to be confirmed at completion of construction).

- (M) - EASEMENT TO DRAIN WATER 2 WIDE
- (N) - RESTRICTION ON USE OF LAND 0.9 WIDE
- (P) - EASEMENT FOR CONSTRUCTION AND MAINTENANCE 0.9 WIDE
- (E2) - RESTRICTION ON USE OF LAND 'NO BUILD' ENVELOPE AND VMP
- \* GENERAL RESTRICTION ON USE OF LAND EFFECTS ALL LOTS

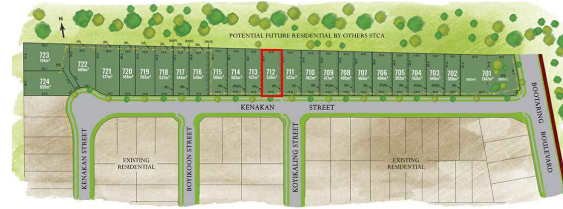
REVISION/S: NSW201403\_STAGE7\_SALES\_REV6  
 DATE: 12 AUGUST 2022  
 BY: ACOR CONSULTANTS PTY LTD

# LOT 712, KENAKAN STREET, EDGEWORTH

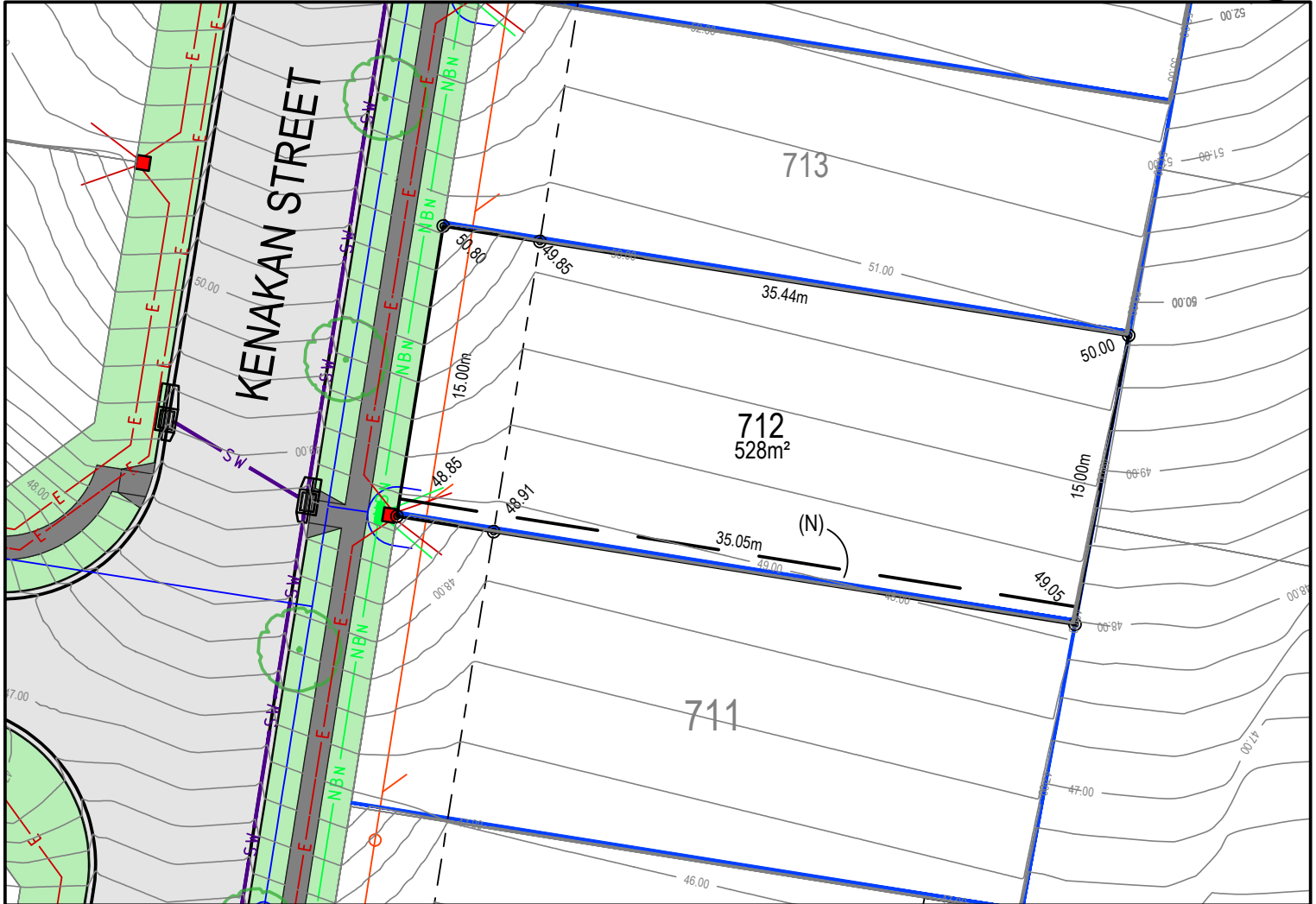
## MASTER PLAN



## STAGE PLAN



## PRELIMINARY SITE ANALYSIS PLAN



- LEGEND:**
- BATTER INTERFACE
  - RETAINING WALL
  - STORMWATER PIT
  - SV — STORMWATER PIPE
  - S — SEWERMAIN
  - SEWER MAINTENANCE STRUCTURE
  - S — SEWER JUNCTION
  - W — WATERMAIN
  - X — HYDRANT, STOP VALVE
  - NBN — TELSTRA / NBN
  - TELSTRA / NBN PIT
  - E — UNDER GROUND POWER
  - ELECTRICITY PILLAR
  - ELECTRICAL EASEMENT
  - LIGHT POLE
  - RESTRICTION ON THE USE OF LAND
  - STREET TREES
  - ASSET PROTECTION ZONE BDY

### DISCLAIMER/ NOTES:

1. Contours are based on finished design levels and are subject to construction and Council certification and therefore should not be considered as final or as-built.
2. Location of utility services including but not limited to power, water, sewer, communications and gas are subject to construction and supply authority certification and therefore should not be considered as final or as-built.
3. Survey information such as boundary dimensions and areas, easements etc are subject to final survey. Purchasers should refer to the deposited plan and 88B instrument contained in the contract for sale of land for further detailed information.
4. Bushfire and geotechnical classification are provided for convenience. Purchasers should refer to referenced detail specialist reports.
5. This preliminary site analysis plan has been collated from various sources of design information and is provided for convenience to assist purchasers in obtaining quotations/ tenders for dwelling construction.
6. This document does not form part of the contract of sale of the land.
7. Anticipated site classification is H2 or better (to be confirmed at completion of construction).

- (M) - EASEMENT TO DRAIN WATER 2 WIDE
- (N) - RESTRICTION ON USE OF LAND 0.9 WIDE
- (P) - EASEMENT FOR CONSTRUCTION AND MAINTENANCE 0.9 WIDE
- (E2) - RESTRICTION ON USE OF LAND 'NO BUILD' ENVELOPE AND VMP
- \* GENERAL RESTRICTION ON USE OF LAND EFFECTS ALL LOTS

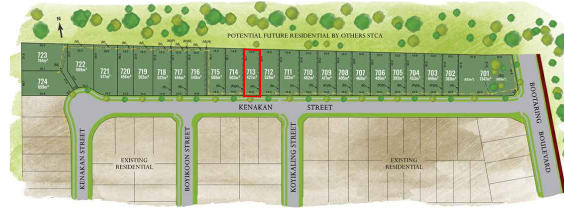
REVISION/S: NSW201403\_STAGE7\_SALES\_REV6  
 DATE: 12 AUGUST 2022  
 BY: ACOR CONSULTANTS PTY LTD

# LOT 713, KENAKAN STREET, EDGEWORTH

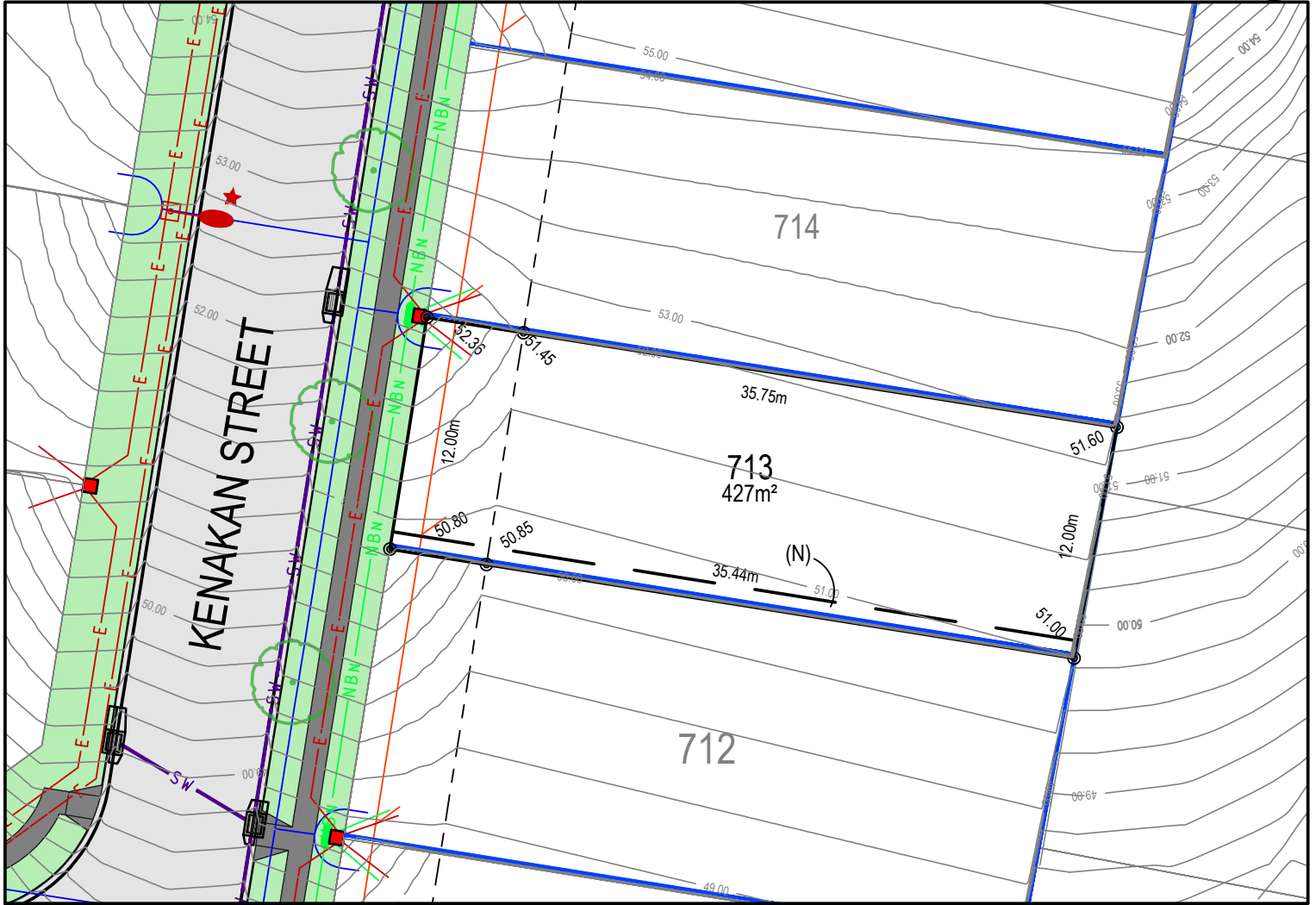
## MASTER PLAN



## STAGE PLAN



## PRELIMINARY SITE ANALYSIS PLAN



- LEGEND:**
- BATTER INTERFACE
  - RETAINING WALL
  - STORMWATER PIT
  - SV — STORMWATER PIPE
  - S — SEWERMAIN
  - SEWER MAINTENANCE STRUCTURE
  - S — SEWER JUNCTION
  - W — WATERMAIN
  - X — HYDRANT, STOP VALVE
  - NBN — TELSTRA / NBN
  - TELSTRA / NBN PIT
  - E — UNDER GROUND POWER
  - ELECTRICITY PILLAR
  - ELECTRICAL EASEMENT
  - LIGHT POLE
  - R — RESTRICTION ON THE USE OF LAND
  - STREET TREES
  - ASSET PROTECTION ZONE BDY

### DISCLAIMER/ NOTES:

1. Contours are based on finished design levels and are subject to construction and Council certification and therefore should not be considered as final or as-built.
2. Location of utility services including but not limited to power, water, sewer, communications and gas are subject to construction and supply authority certification and therefore should not be considered as final or as-built.
3. Survey information such as boundary dimensions and areas, easements etc are subject to final survey. Purchasers should refer to the deposited plan and 88B instrument contained in the contract for sale of land for further detailed information.
4. Bushfire and geotechnical classification are provided for convenience. Purchasers should refer to referenced detail specialist reports.
5. This preliminary site analysis plan has been collated from various sources of design information and is provided for convenience to assist purchasers in obtaining quotations/ tenders for dwelling construction.
6. This document does not form part of the contract of sale of the land.
7. Anticipated site classification is H2 or better (to be confirmed at completion of construction).

- (M) - EASEMENT TO DRAIN WATER 2 WIDE
- (N) - RESTRICTION ON USE OF LAND 0.9 WIDE
- (P) - EASEMENT FOR CONSTRUCTION AND MAINTENANCE 0.9 WIDE
- (E2) - RESTRICTION ON USE OF LAND 'NO BUILD' ENVELOPE AND VMP
- \* GENERAL RESTRICTION ON USE OF LAND EFFECTS ALL LOTS

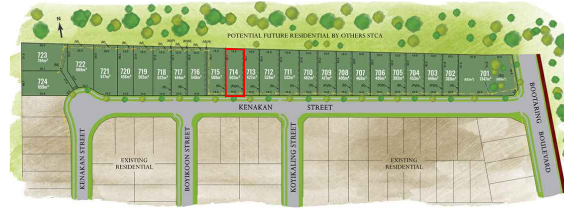
REVISION/S: NSW201403\_STAGE7\_SALES\_REV6  
 DATE: 12 AUGUST 2022  
 BY: ACOR CONSULTANTS PTY LTD

# LOT 714, KENAKAN STREET, EDGEWORTH

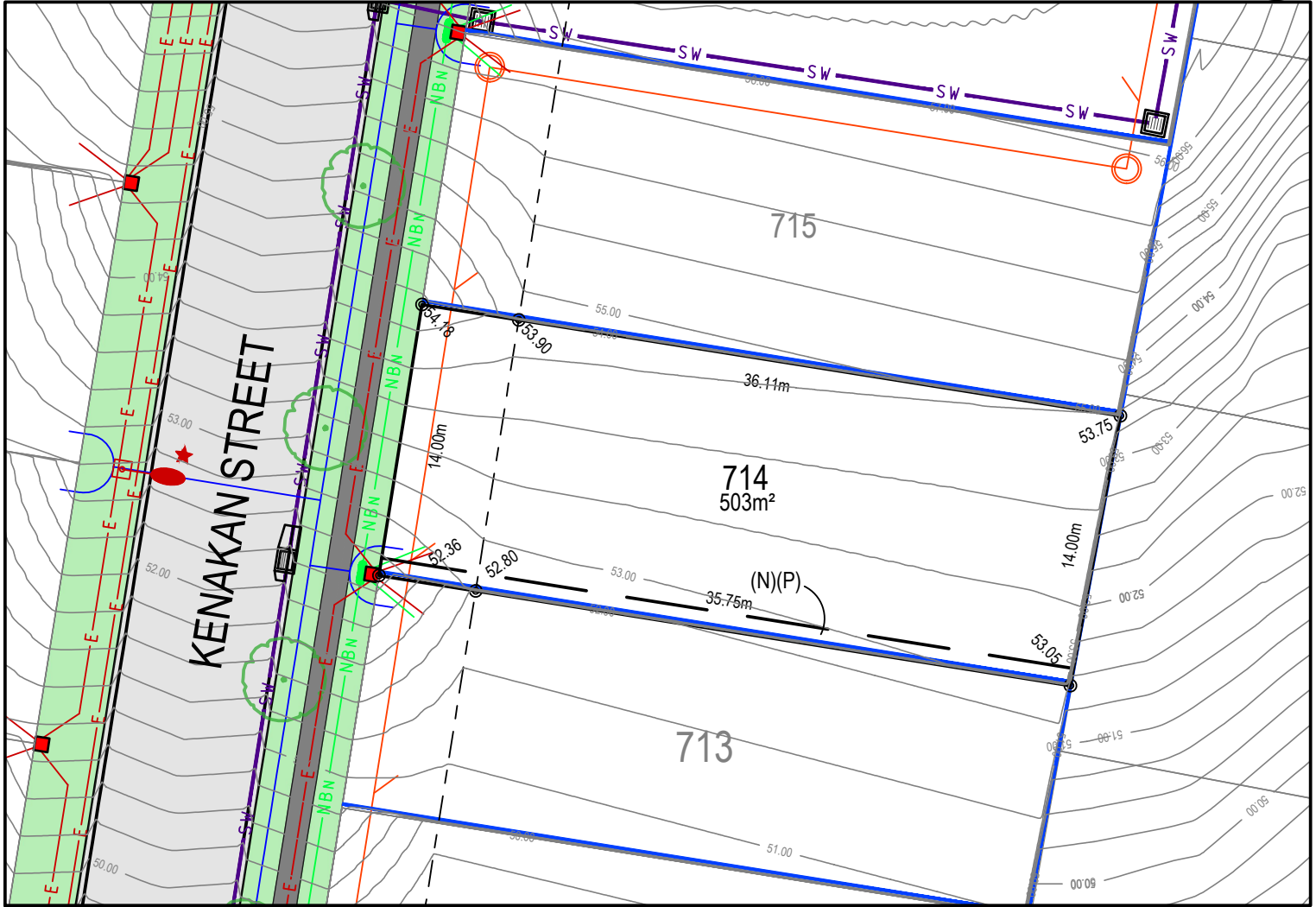
## MASTER PLAN



## STAGE PLAN



## PRELIMINARY SITE ANALYSIS PLAN



**LEGEND:**

	BATTER INTERFACE
	RETAINING WALL
	STORMWATER PIT
	STORMWATER PIPE
	SEWERMAIN
	SEWER MAINTENANCE STRUCTURE
	SEWER JUNCTION
	WATERMAIN
	HYDRANT, STOP VALVE
	TELSTRA / NBN
	TELSTRA / NBN PIT
	UNDER GROUND POWER
	ELECTRICITY PILLAR
	ELECTRICAL EASEMENT
	LIGHT POLE
	RESTRICTION ON THE USE OF LAND
	STREET TREES
	ASSET PROTECTION ZONE BDY

### DISCLAIMER/ NOTES:

- Contours are based on finished design levels and are subject to construction and Council certification and therefore should not be considered as final or as-built.
- Location of utility services including but not limited to power, water, sewer, communications and gas are subject to construction and supply authority certification and therefore should not be considered as final or as-built.
- Survey information such as boundary dimensions and areas, easements etc are subject to final survey. Purchasers should refer to the deposited plan and 88B instrument contained in the contract for sale of land for further detailed information.
- Bushfire and geotechnical classification are provided for convenience. Purchasers should refer to referenced detail specialist reports.
- This preliminary site analysis plan has been collated from various sources of design information and is provided for convenience to assist purchasers in obtaining quotations/ tenders for dwelling construction.
- This document does not form part of the contract of sale of the land.
- Anticipated site classification is H2 or better (to be confirmed at completion of construction).

- (M) - EASEMENT TO DRAIN WATER 2 WIDE  
 (N) - RESTRICTION ON USE OF LAND 0.9 WIDE  
 (P) - EASEMENT FOR CONSTRUCTION AND MAINTENANCE 0.9 WIDE  
 (E2) - RESTRICTION ON USE OF LAND 'NO BUILD' ENVELOPE AND VMP  
 \* GENERAL RESTRICTION ON USE OF LAND EFFECTS ALL LOTS

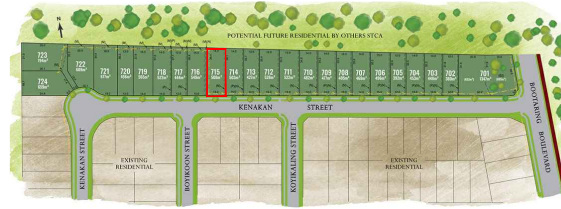
REVISION/S: NSW201403\_STAGE7\_SALES\_REV6  
 DATE: 12 AUGUST 2022  
 BY: ACOR CONSULTANTS PTY LTD

# LOT 715, KENAKAN STREET, EDGEWORTH

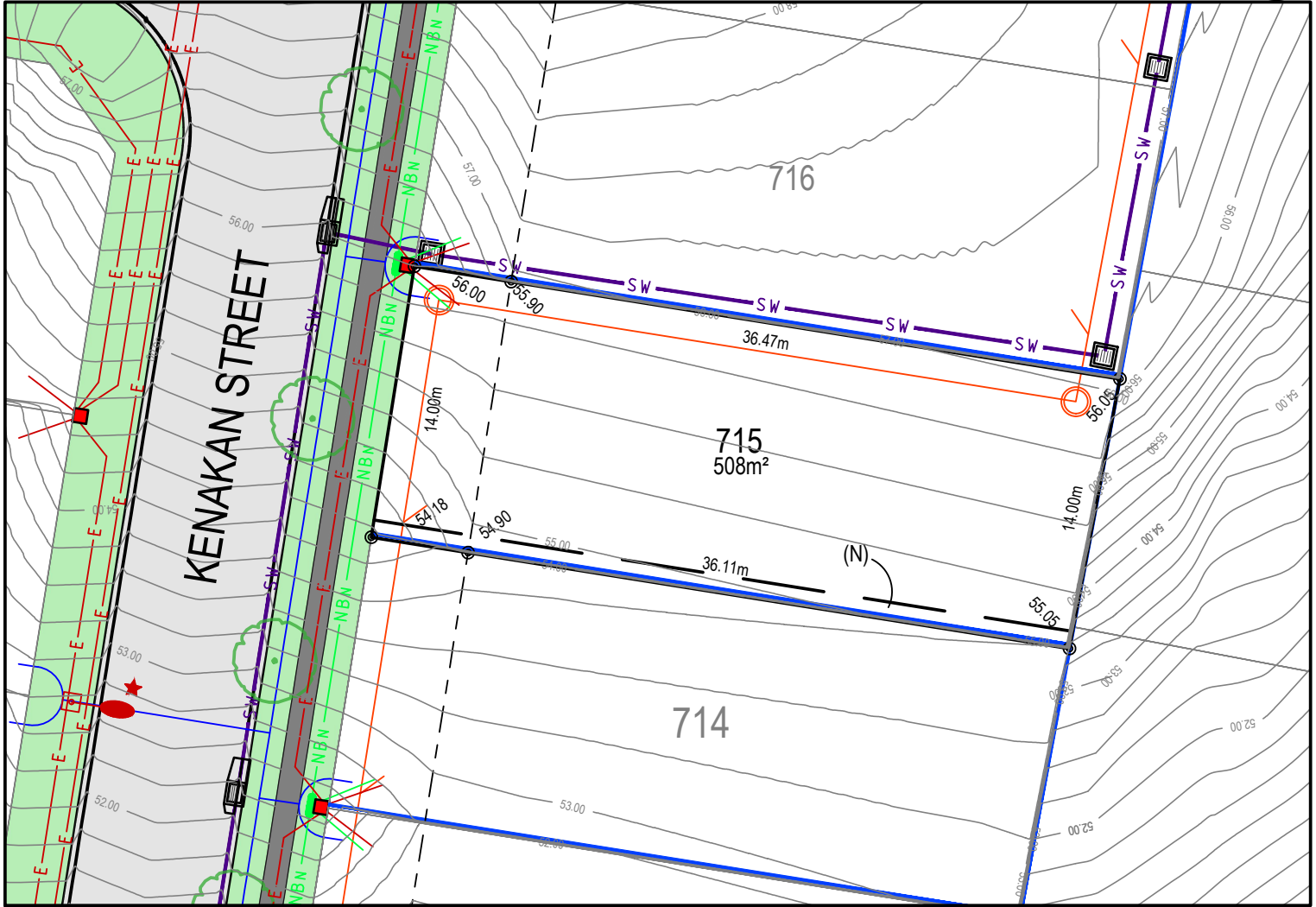
## MASTER PLAN



## STAGE PLAN



## PRELIMINARY SITE ANALYSIS PLAN



### LEGEND:

- BATTER INTERFACE
- RETAINING WALL
- STORMWATER PIT
- STORMWATER PIPE
- SEWERMAIN
- SEWER MAINTENANCE STRUCTURE
- SEWER JUNCTION
- WATERMAIN
- HYDRANT, STOP VALVE
- TELSTRA / NBN
- TELSTRA / NBN PIT
- UNDER GROUND POWER
- ELECTRICITY PILLAR
- ELECTRICAL EASEMENT
- LIGHT POLE
- RESTRICTION ON THE USE OF LAND
- STREET TREES
- ASSET PROTECTION ZONE BDY

### DISCLAIMER/ NOTES:

1. Contours are based on finished design levels and are subject to construction and Council certification and therefore should not be considered as final or as-built.
2. Location of utility services including but not limited to power, water, sewer, communications and gas are subject to construction and supply authority certification and therefore should not be considered as final or as-built.
3. Survey information such as boundary dimensions and areas, easements etc are subject to final survey. Purchasers should refer to the deposited plan and 88B instrument contained in the contract for sale of land for further detailed information.
4. Bushfire and geotechnical classification are provided for convenience. Purchasers should refer to referenced detail specialist reports.
5. This preliminary site analysis plan has been collated from various sources of design information and is provided for convenience to assist purchasers in obtaining quotations/ tenders for dwelling construction.
6. This document does not form part of the contract of sale of the land.
7. Anticipated site classification is H2 or better (to be confirmed at completion of construction).

- (M) - EASEMENT TO DRAIN WATER 2 WIDE
- (N) - RESTRICTION ON USE OF LAND 0.9 WIDE
- (P) - EASEMENT FOR CONSTRUCTION AND MAINTENANCE 0.9 WIDE
- (E2) - RESTRICTION ON USE OF LAND 'NO BUILD' ENVELOPE AND VMP
- \* GENERAL RESTRICTION ON USE OF LAND EFFECTS ALL LOTS

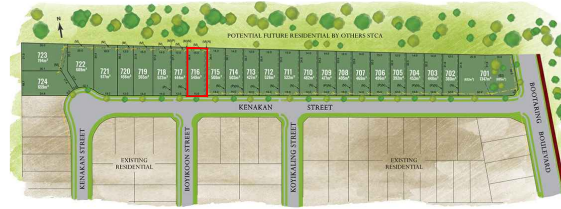
REVISION/S: NSW201403\_STAGE7\_SALES\_REV6  
 DATE: 12 AUGUST 2022  
 BY: ACOR CONSULTANTS PTY LTD

# LOT 716, KENAKAN STREET, EDGEWORTH

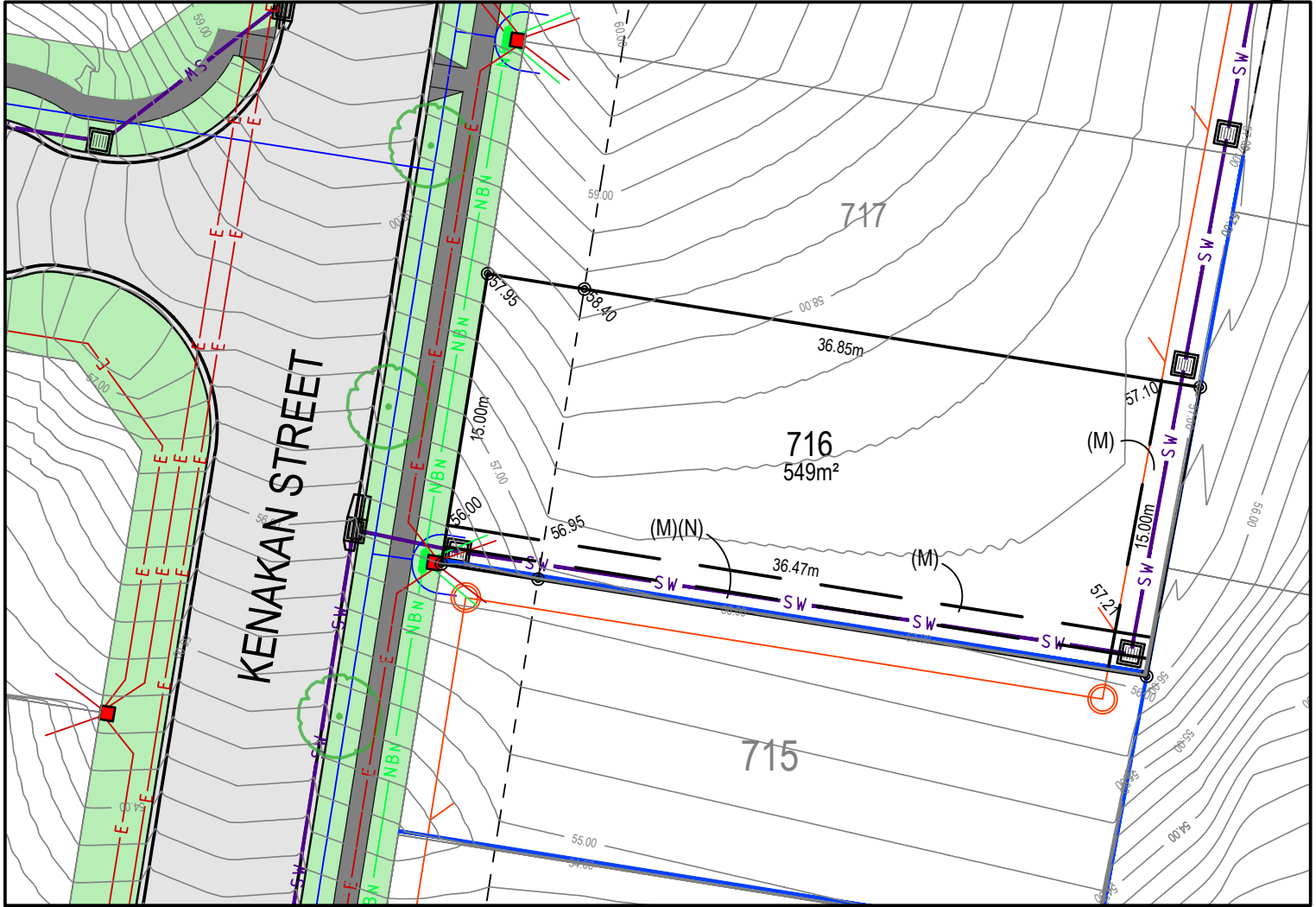
## MASTER PLAN



## STAGE PLAN



## PRELIMINARY SITE ANALYSIS PLAN



- LEGEND:**
- BATTER INTERFACE
  - RETAINING WALL
  - STORMWATER PIT
  - SV — STORMWATER PIPE
  - S — SEWERMAIN
  - SEWER MAINTENANCE STRUCTURE
  - S — SEWER JUNCTION
  - W — WATERMAIN
  - X — HYDRANT, STOP VALVE
  - NBN — TELSTRA / NBN
  - TELSTRA / NBN PIT
  - E — UNDER GROUND POWER
  - ELECTRICITY PILLAR
  - ELECTRICAL EASEMENT
  - LIGHT POLE
  - RESTRICTION ON THE USE OF LAND
  - STREET TREES
  - ASSET PROTECTION ZONE BDY

### DISCLAIMER/ NOTES:

1. Contours are based on finished design levels and are subject to construction and Council certification and therefore should not be considered as final or as-built.
2. Location of utility services including but not limited to power, water, sewer, communications and gas are subject to construction and supply authority certification and therefore should not be considered as final or as-built.
3. Survey information such as boundary dimensions and areas, easements etc are subject to final survey. Purchasers should refer to the deposited plan and 88B instrument contained in the contract for sale of land for further detailed information.
4. Bushfire and geotechnical classification are provided for convenience. Purchasers should refer to referenced detail specialist reports.
5. This preliminary site analysis plan has been collated from various sources of design information and is provided for convenience to assist purchasers in obtaining quotations/ tenders for dwelling construction.
6. This document does not form part of the contract of sale of the land.
7. Anticipated site classification is H2 or better (to be confirmed at completion of construction).

- (M) - EASEMENT TO DRAIN WATER 2 WIDE
- (N) - RESTRICTION ON USE OF LAND 0.9 WIDE
- (P) - EASEMENT FOR CONSTRUCTION AND MAINTENANCE 0.9 WIDE
- (E2) - RESTRICTION ON USE OF LAND 'NO BUILD' ENVELOPE AND VMP
- \* GENERAL RESTRICTION ON USE OF LAND EFFECTS ALL LOTS

REVISION/S: NSW201403\_STAGE7\_SALES\_REV6  
 DATE: 12 AUGUST 2022  
 BY: ACOR CONSULTANTS PTY LTD

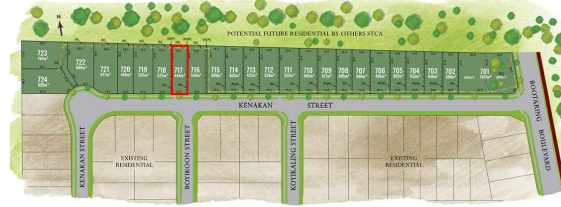


# LOT 717, KENAKAN STREET, EDGEWORTH

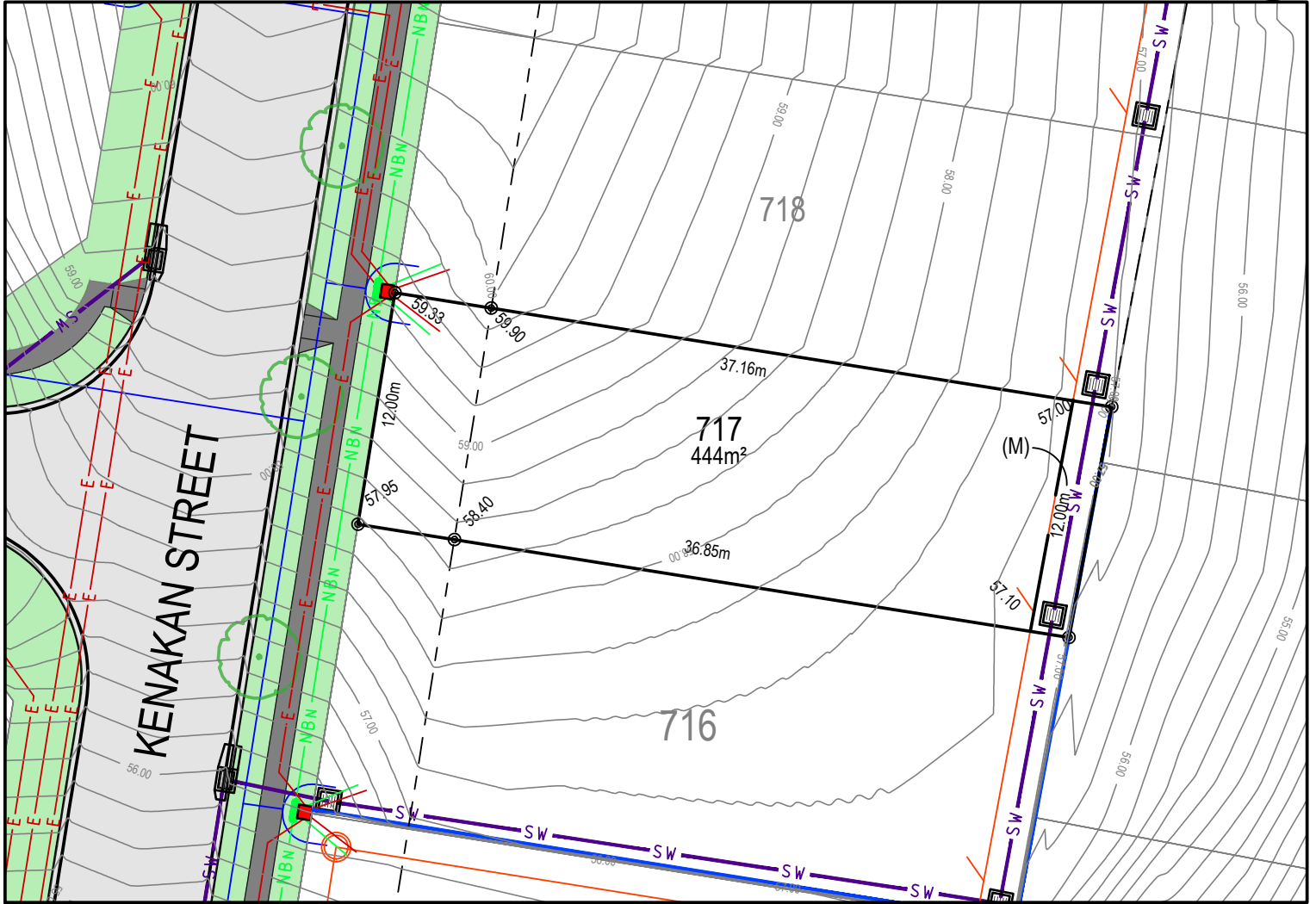
## MASTER PLAN



## STAGE PLAN



## PRELIMINARY SITE ANALYSIS PLAN



- LEGEND:**
- BATTER INTERFACE
  - RETAINING WALL
  - STORMWATER PIT
  - SV — STORMWATER PIPE
  - S — SEWERMAIN
  - SEWER MAINTENANCE STRUCTURE
  - S — SEWER JUNCTION
  - W — WATERMAIN
  - X — HYDRANT, STOP VALVE
  - NBN — TELSTRA / NBN
  - TELSTRA / NBN PIT
  - E — UNDER GROUND POWER
  - ELECTRICITY PILLAR
  - ELECTRICAL EASEMENT
  - LIGHT POLE
  - RESTRICTION ON THE USE OF LAND
  - STREET TREES
  - ASSET PROTECTION ZONE BDY

### DISCLAIMER/ NOTES:

1. Contours are based on finished design levels and are subject to construction and Council certification and therefore should not be considered as final or as-built.
2. Location of utility services including but not limited to power, water, sewer, communications and gas are subject to construction and supply authority certification and therefore should not be considered as final or as-built.
3. Survey information such as boundary dimensions and areas, easements etc are subject to final survey. Purchasers should refer to the deposited plan and 88B instrument contained in the contract for sale of land for further detailed information.
4. Bushfire and geotechnical classification are provided for convenience. Purchasers should refer to referenced detail specialist reports.
5. This preliminary site analysis plan has been collated from various sources of design information and is provided for convenience to assist purchasers in obtaining quotations/ tenders for dwelling construction.
6. This document does not form part of the contract of sale of the land.
7. Anticipated site classification is H2 or better (to be confirmed at completion of construction).

- (M) - EASEMENT TO DRAIN WATER 2 WIDE
- (N) - RESTRICTION ON USE OF LAND 0.9 WIDE
- (P) - EASEMENT FOR CONSTRUCTION AND MAINTENANCE 0.9 WIDE
- (E2) - RESTRICTION ON USE OF LAND 'NO BUILD' ENVELOPE AND VMP
- \* GENERAL RESTRICTION ON USE OF LAND EFFECTS ALL LOTS

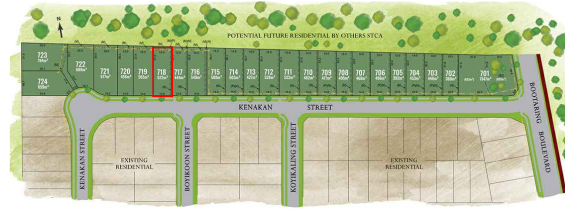
REVISION/S: NSW201403\_STAGE7\_SALES\_REVV  
 DATE: 12 AUGUST 2022  
 BY: ACOR CONSULTANTS PTY LTD

# LOT 718, KENAKAN STREET, EDGEWORTH

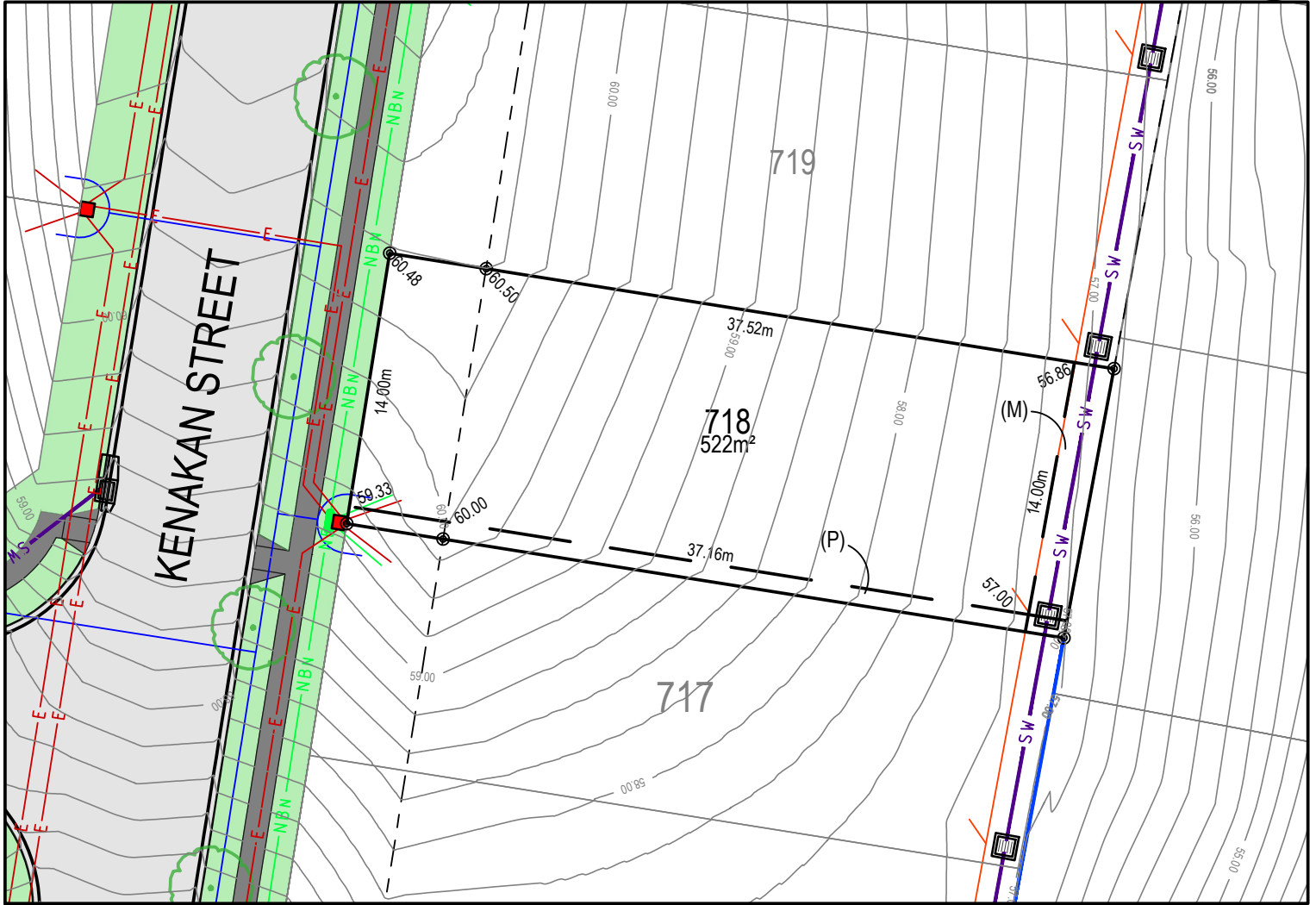
## MASTER PLAN



## STAGE PLAN



## PRELIMINARY SITE ANALYSIS PLAN



- LEGEND:**
- BATTER INTERFACE
  - RETAINING WALL
  - STORMWATER PIT
  - SV --- STORMWATER PIPE
  - S --- SEWERMAIN
  - O --- SEWER MAINTENANCE STRUCTURE
  - S --- SEWER JUNCTION
  - W --- WATERMAIN
  - O X --- HYDRANT, STOP VALVE
  - NBN --- TELSTRA / NBN
  - TELSTRA / NBN PIT
  - E --- UNDER GROUND POWER
  - ELECTRICITY PILLAR
  - ELECTRICAL EASEMENT
  - LIGHT POLE
  - RESTRICTION ON THE USE OF LAND
  - STREET TREES
  - ASSET PROTECTION ZONE BDY

### DISCLAIMER/ NOTES:

1. Contours are based on finished design levels and are subject to construction and Council certification and therefore should not be considered as final or as-built.
2. Location of utility services including but not limited to power, water, sewer, communications and gas are subject to construction and supply authority certification and therefore should not be considered as final or as-built.
3. Survey information such as boundary dimensions and areas, easements etc are subject to final survey. Purchasers should refer to the deposited plan and 88B instrument contained in the contract for sale of land for further detailed information.
4. Bushfire and geotechnical classification are provided for convenience. Purchasers should refer to referenced detail specialist reports.
5. This preliminary site analysis plan has been collated from various sources of design information and is provided for convenience to assist purchasers in obtaining quotations/ tenders for dwelling construction.
6. This document does not form part of the contract of sale of the land.
7. Anticipated site classification is H2 or better (to be confirmed at completion of construction).

- (M) - EASEMENT TO DRAIN WATER 2 WIDE
- (N) - RESTRICTION ON USE OF LAND 0.9 WIDE
- (P) - EASEMENT FOR CONSTRUCTION AND MAINTENANCE 0.9 WIDE
- (E2) - RESTRICTION ON USE OF LAND 'NO BUILD' ENVELOPE AND VMP
- \* GENERAL RESTRICTION ON USE OF LAND EFFECTS ALL LOTS

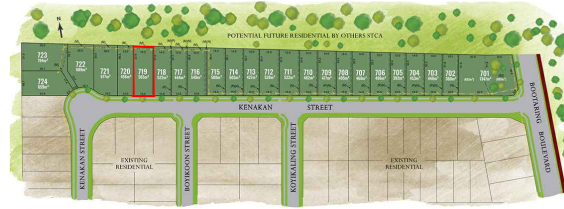
REVISION/S: NSW201403\_STAGE7\_SALES\_REV6  
 DATE: 12 AUGUST 2022  
 BY: ACOR CONSULTANTS PTY LTD

# LOT 719, KENAKAN STREET, EDGEWORTH

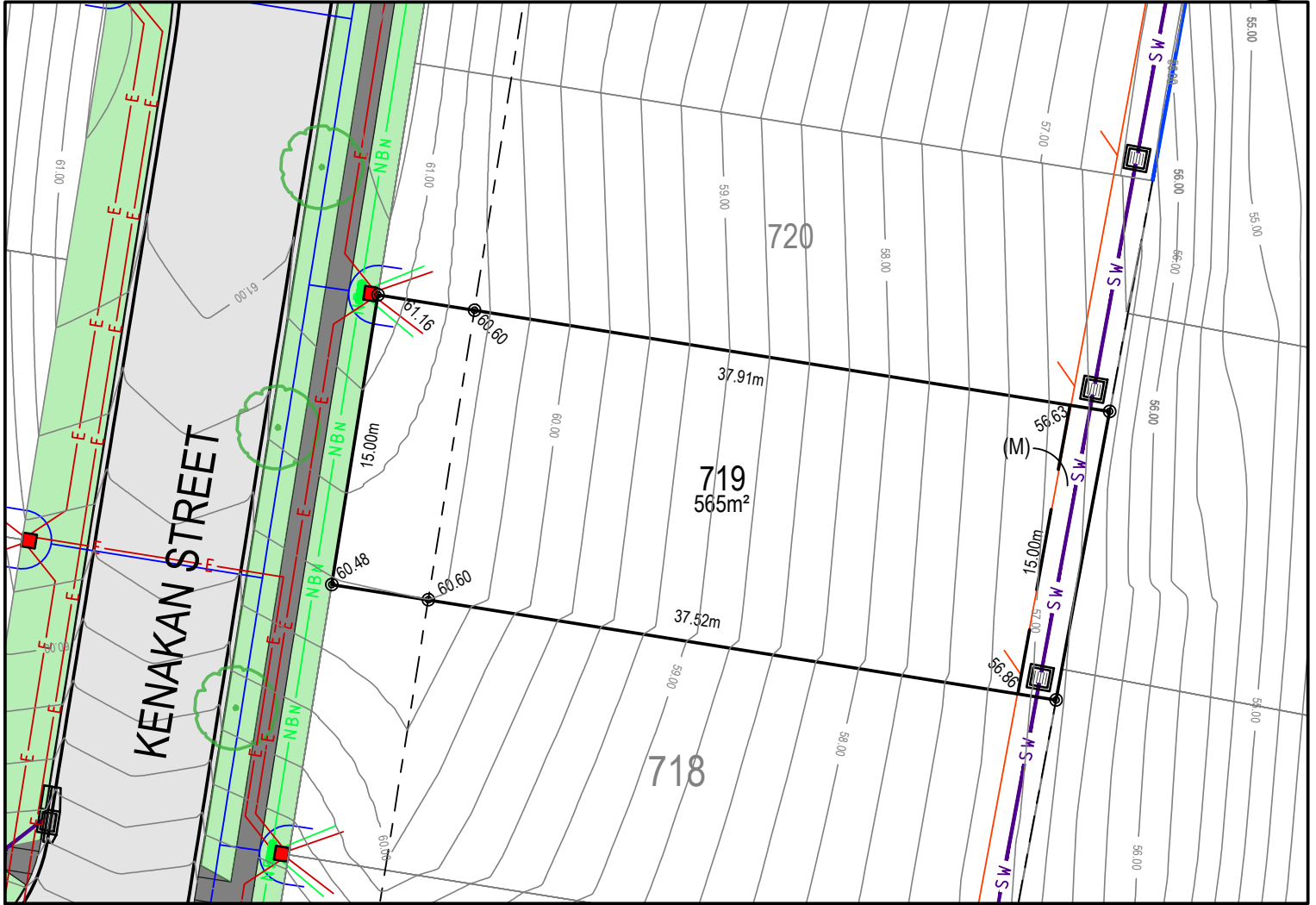
## MASTER PLAN



## STAGE PLAN



## PRELIMINARY SITE ANALYSIS PLAN



- LEGEND:**
- BATTER INTERFACE
  - RETAINING WALL
  - STORMWATER PIT
  - STORMWATER PIPE
  - SEWERMAIN
  - SEWER MAINTENANCE STRUCTURE
  - SEWER JUNCTION
  - WATERMAIN
  - HYDRANT, STOP VALVE
  - TELSTRA / NBN
  - TELSTRA / NBN PIT
  - UNDER GROUND POWER
  - ELECTRICITY PILLAR
  - ELECTRICAL EASEMENT
  - LIGHT POLE
  - RESTRICTION ON THE USE OF LAND
  - STREET TREES
  - ASSET PROTECTION ZONE BDY

### DISCLAIMER/ NOTES:

1. Contours are based on finished design levels and are subject to construction and Council certification and therefore should not be considered as final or as-built.
2. Location of utility services including but not limited to power, water, sewer, communications and gas are subject to construction and supply authority certification and therefore should not be considered as final or as-built.
3. Survey information such as boundary dimensions and areas, easements etc are subject to final survey. Purchasers should refer to the deposited plan and 88B instrument contained in the contract for sale of land for further detailed information.
4. Bushfire and geotechnical classification are provided for convenience. Purchasers should refer to referenced detail specialist reports.
5. This preliminary site analysis plan has been collated from various sources of design information and is provided for convenience to assist purchasers in obtaining quotations/ tenders for dwelling construction.
6. This document does not form part of the contract of sale of the land.
7. Anticipated site classification is H2 or better (to be confirmed at completion of construction).

- (M) - EASEMENT TO DRAIN WATER 2 WIDE
- (N) - RESTRICTION ON USE OF LAND 0.9 WIDE
- (P) - EASEMENT FOR CONSTRUCTION AND MAINTENANCE 0.9 WIDE
- (E2) - RESTRICTION ON USE OF LAND 'NO BUILD' ENVELOPE AND VMP
- \* GENERAL RESTRICTION ON USE OF LAND EFFECTS ALL LOTS

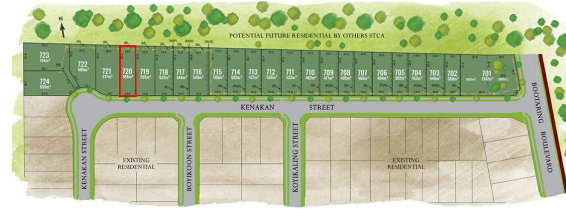
REVISION/S: NSW201403\_STAGE7\_SALES\_REV6  
 DATE: 12 AUGUST 2022  
 BY: ACOR CONSULTANTS PTY LTD

# LOT 720, KENAKAN STREET, EDGEWORTH

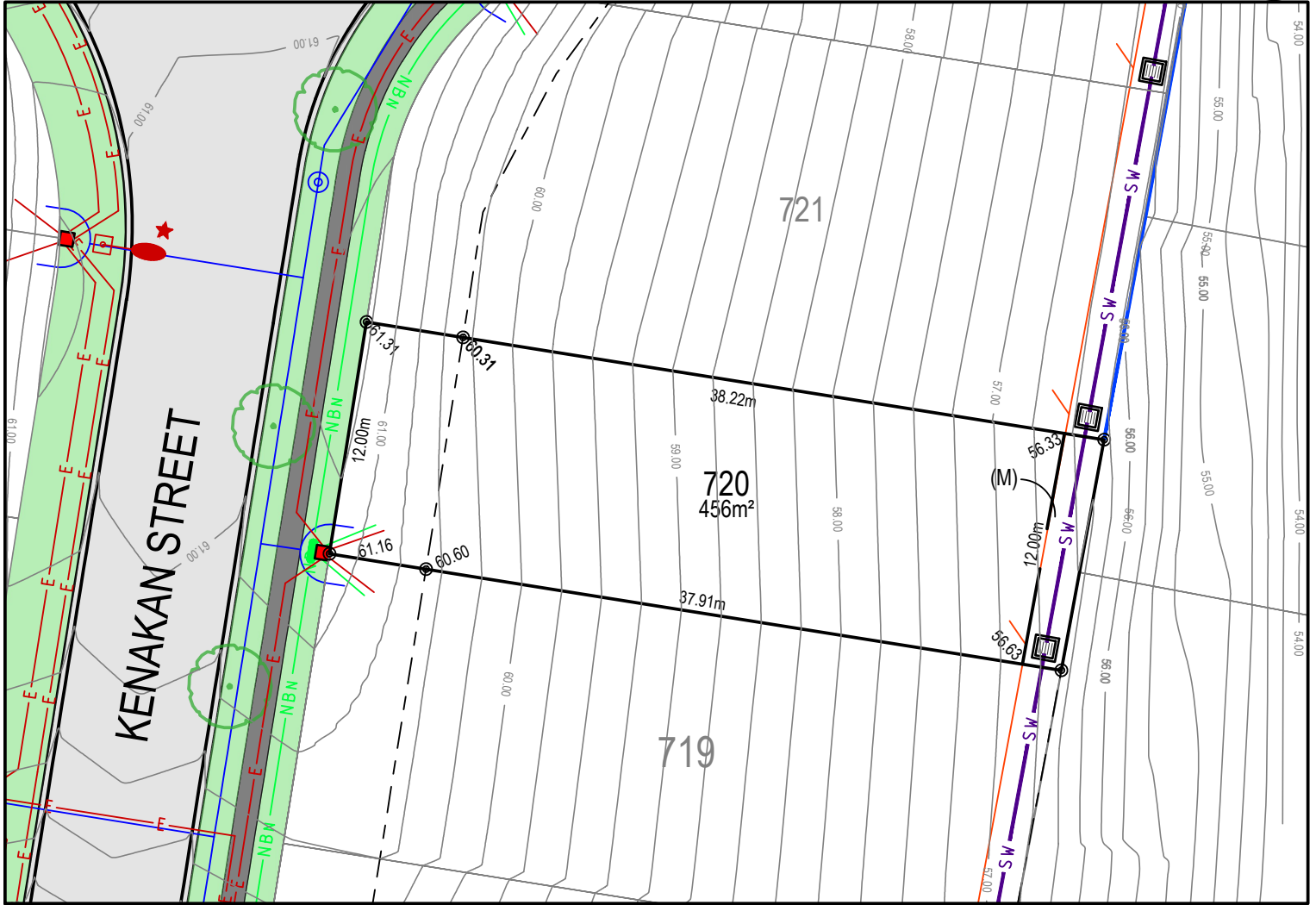
## MASTER PLAN



## STAGE PLAN



## PRELIMINARY SITE ANALYSIS PLAN



- LEGEND:**
- BATTER INTERFACE
  - RETAINING WALL
  - STORMWATER PIT
  - SV — STORMWATER PIPE
  - S — SEWERMAIN
  - SEWER MAINTENANCE STRUCTURE
  - S — SEWER JUNCTION
  - W — WATERMAIN
  - X — HYDRANT, STOP VALVE
  - NBN — TELSTRA / NBN
  - TELSTRA / NBN PIT
  - E — UNDER GROUND POWER
  - ELECTRICITY PILLAR
  - ELECTRICAL EASEMENT
  - LIGHT POLE
  - R — RESTRICTION ON THE USE OF LAND
  - STREET TREES
  - ASSET PROTECTION ZONE BDY

### DISCLAIMER/ NOTES:

1. Contours are based on finished design levels and are subject to construction and Council certification and therefore should not be considered as final or as-built.
2. Location of utility services including but not limited to power, water, sewer, communications and gas are subject to construction and supply authority certification and therefore should not be considered as final or as-built.
3. Survey information such as boundary dimensions and areas, easements etc are subject to final survey. Purchasers should refer to the deposited plan and 88B instrument contained in the contract for sale of land for further detailed information.
4. Bushfire and geotechnical classification are provided for convenience. Purchasers should refer to referenced detail specialist reports.
5. This preliminary site analysis plan has been collated from various sources of design information and is provided for convenience to assist purchasers in obtaining quotations/ tenders for dwelling construction.
6. This document does not form part of the contract of sale of the land.
7. Anticipated site classification is H2 or better (to be confirmed at completion of construction).

- (M) - EASEMENT TO DRAIN WATER 2 WIDE
- (N) - RESTRICTION ON USE OF LAND 0.9 WIDE
- (P) - EASEMENT FOR CONSTRUCTION AND MAINTENANCE 0.9 WIDE
- (E2) - RESTRICTION ON USE OF LAND 'NO BUILD' ENVELOPE AND VMP
- \* GENERAL RESTRICTION ON USE OF LAND EFFECTS ALL LOTS

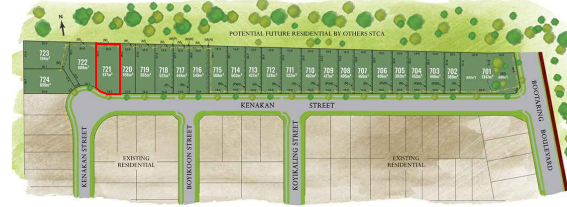
REVISION/S: NSW201403\_STAGE7\_SALES\_REV6  
 DATE: 12 AUGUST 2022  
 BY: ACOR CONSULTANTS PTY LTD

# LOT 721, KENAKAN STREET, EDGEWORTH

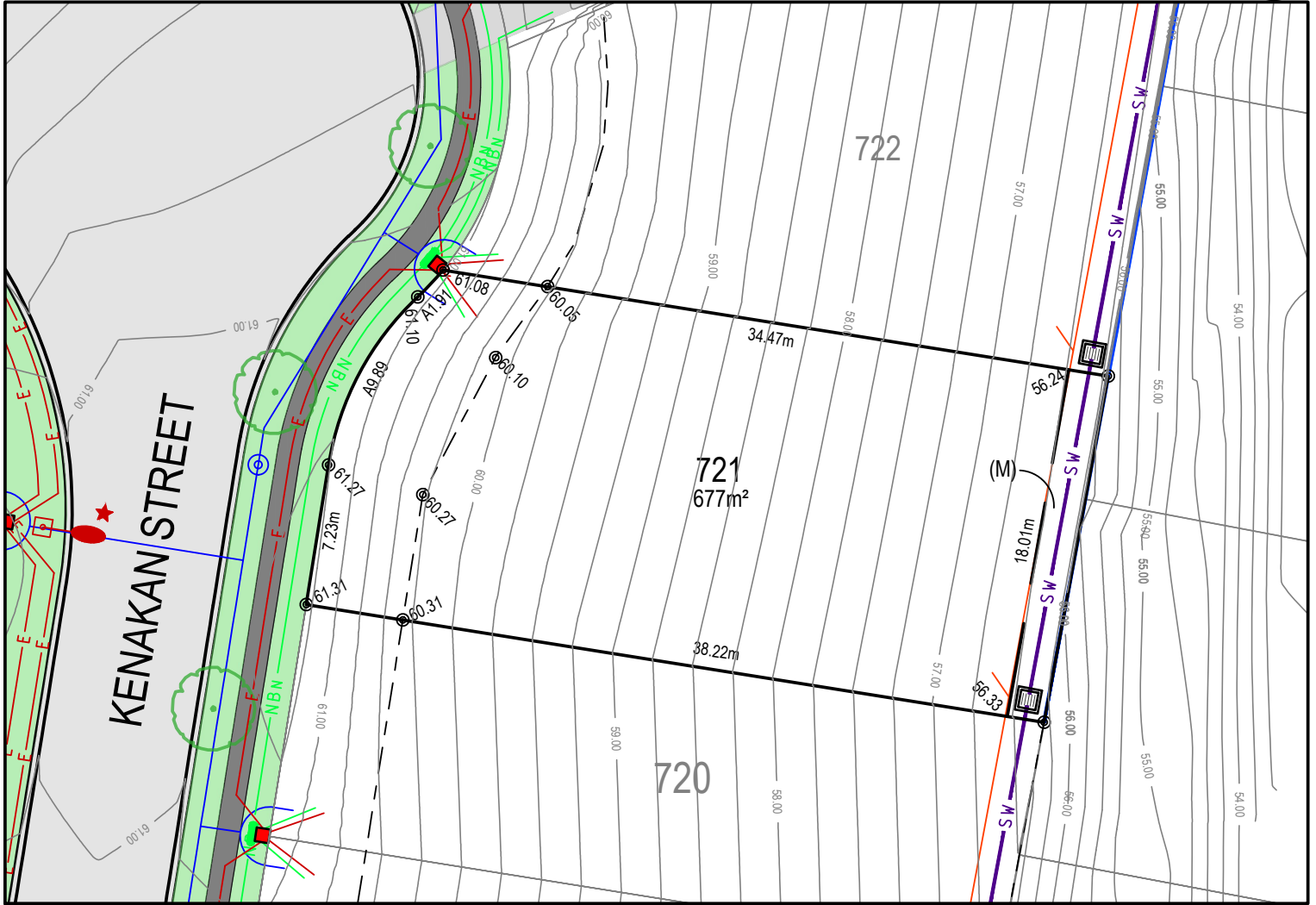
## MASTER PLAN



## STAGE PLAN



## PRELIMINARY SITE ANALYSIS PLAN



- LEGEND:**
- BATTER INTERFACE
  - RETAINING WALL
  - STORMWATER PIT
  - STORMWATER PIPE
  - SEWERMAIN
  - SEWER MAINTENANCE STRUCTURE
  - SEWER JUNCTION
  - WATERMAIN
  - HYDRANT, STOP VALVE
  - TELSTRA / NBN
  - TELSTRA / NBN PIT
  - UNDER GROUND POWER
  - ELECTRICITY PILLAR
  - ELECTRICAL EASEMENT
  - LIGHT POLE
  - RESTRICTION ON THE USE OF LAND
  - STREET TREES
  - ASSET PROTECTION ZONE BDY

### DISCLAIMER/ NOTES:

1. Contours are based on finished design levels and are subject to construction and Council certification and therefore should not be considered as final or as-built.
2. Location of utility services including but not limited to power, water, sewer, communications and gas are subject to construction and supply authority certification and therefore should not be considered as final or as-built.
3. Survey information such as boundary dimensions and areas, easements etc are subject to final survey. Purchasers should refer to the deposited plan and 88B instrument contained in the contract for sale of land for further detailed information.
4. Bushfire and geotechnical classification are provided for convenience. Purchasers should refer to referenced detail specialist reports.
5. This preliminary site analysis plan has been collated from various sources of design information and is provided for convenience to assist purchasers in obtaining quotations/ tenders for dwelling construction.
6. This document does not form part of the contract of sale of the land.
7. Anticipated site classification is H2 or better (to be confirmed at completion of construction).

- (M) - EASEMENT TO DRAIN WATER 2 WIDE
- (N) - RESTRICTION ON USE OF LAND 0.9 WIDE
- (P) - EASEMENT FOR CONSTRUCTION AND MAINTENANCE 0.9 WIDE
- (E2) - RESTRICTION ON USE OF LAND 'NO BUILD' ENVELOPE AND VMP
- \* GENERAL RESTRICTION ON USE OF LAND EFFECTS ALL LOTS

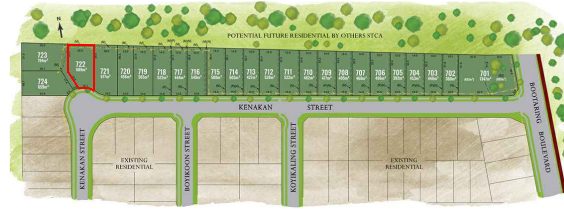
REVISION/S: NSW201403\_STAGE7\_SALES\_REV6  
 DATE: 12 AUGUST 2022  
 BY: ACOR CONSULTANTS PTY LTD

# LOT 722, KENAKAN STREET, EDGEWORTH

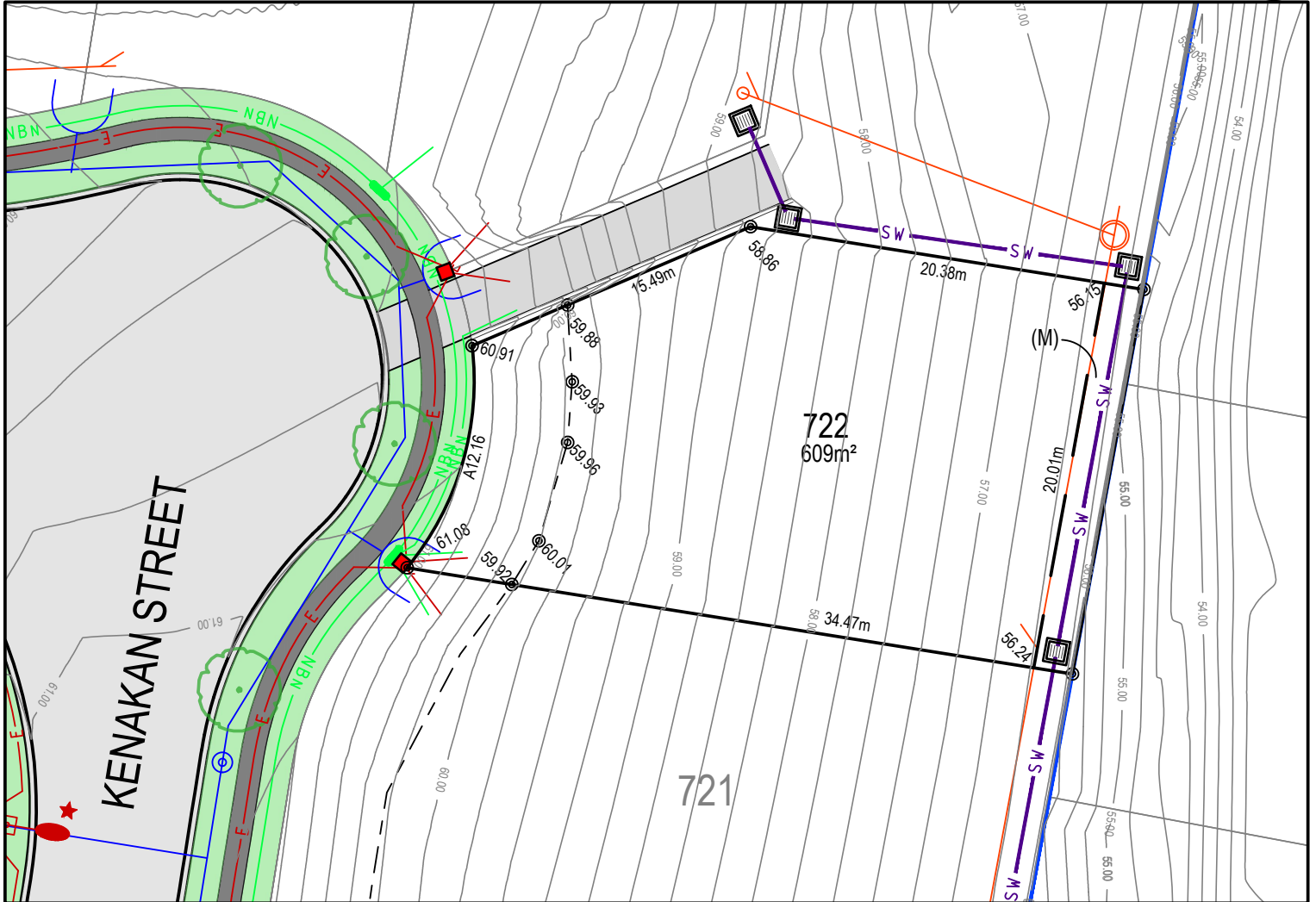
## MASTER PLAN



## STAGE PLAN



## PRELIMINARY SITE ANALYSIS PLAN



- LEGEND:**
- BATTER INTERFACE
  - RETAINING WALL
  - STORMWATER PIT
  - STORMWATER PIPE
  - SEWERMAIN
  - SEWER MAINTENANCE STRUCTURE
  - SEWER JUNCTION
  - WATERMAIN
  - HYDRANT, STOP VALVE
  - TELSTRA / NBN
  - TELSTRA / NBN PIT
  - UNDER GROUND POWER
  - ELECTRICITY PILLAR
  - ELECTRICAL EASEMENT
  - LIGHT POLE
  - RESTRICTION ON THE USE OF LAND
  - STREET TREES
  - ASSET PROTECTION ZONE BDY

### DISCLAIMER/ NOTES:

1. Contours are based on finished design levels and are subject to construction and Council certification and therefore should not be considered as final or as-built.
2. Location of utility services including but not limited to power, water, sewer, communications and gas are subject to construction and supply authority certification and therefore should not be considered as final or as-built.
3. Survey information such as boundary dimensions and areas, easements etc are subject to final survey. Purchasers should refer to the deposited plan and 88B instrument contained in the contract for sale of land for further detailed information.
4. Bushfire and geotechnical classification are provided for convenience. Purchasers should refer to referenced detail specialist reports.
5. This preliminary site analysis plan has been collated from various sources of design information and is provided for convenience to assist purchasers in obtaining quotations/ tenders for dwelling construction.
6. This document does not form part of the contract of sale of the land.
7. Anticipated site classification is H2 or better (to be confirmed at completion of construction).

- (M) - EASEMENT TO DRAIN WATER 2 WIDE
- (N) - RESTRICTION ON USE OF LAND 0.9 WIDE
- (P) - EASEMENT FOR CONSTRUCTION AND MAINTENANCE 0.9 WIDE
- (E2) - RESTRICTION ON USE OF LAND 'NO BUILD' ENVELOPE AND VMP
- \* GENERAL RESTRICTION ON USE OF LAND EFFECTS ALL LOTS

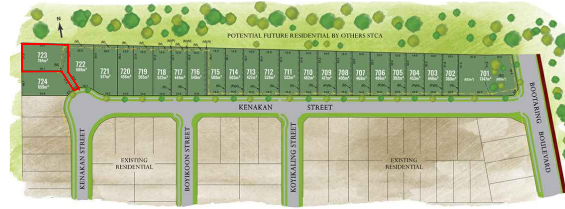
REVISION/S: NSW201403\_STAGE7\_SALES\_REV6  
 DATE: 12 AUGUST 2022  
 BY: ACOR CONSULTANTS PTY LTD

# LOT 723, KENAKAN STREET, EDGEWORTH

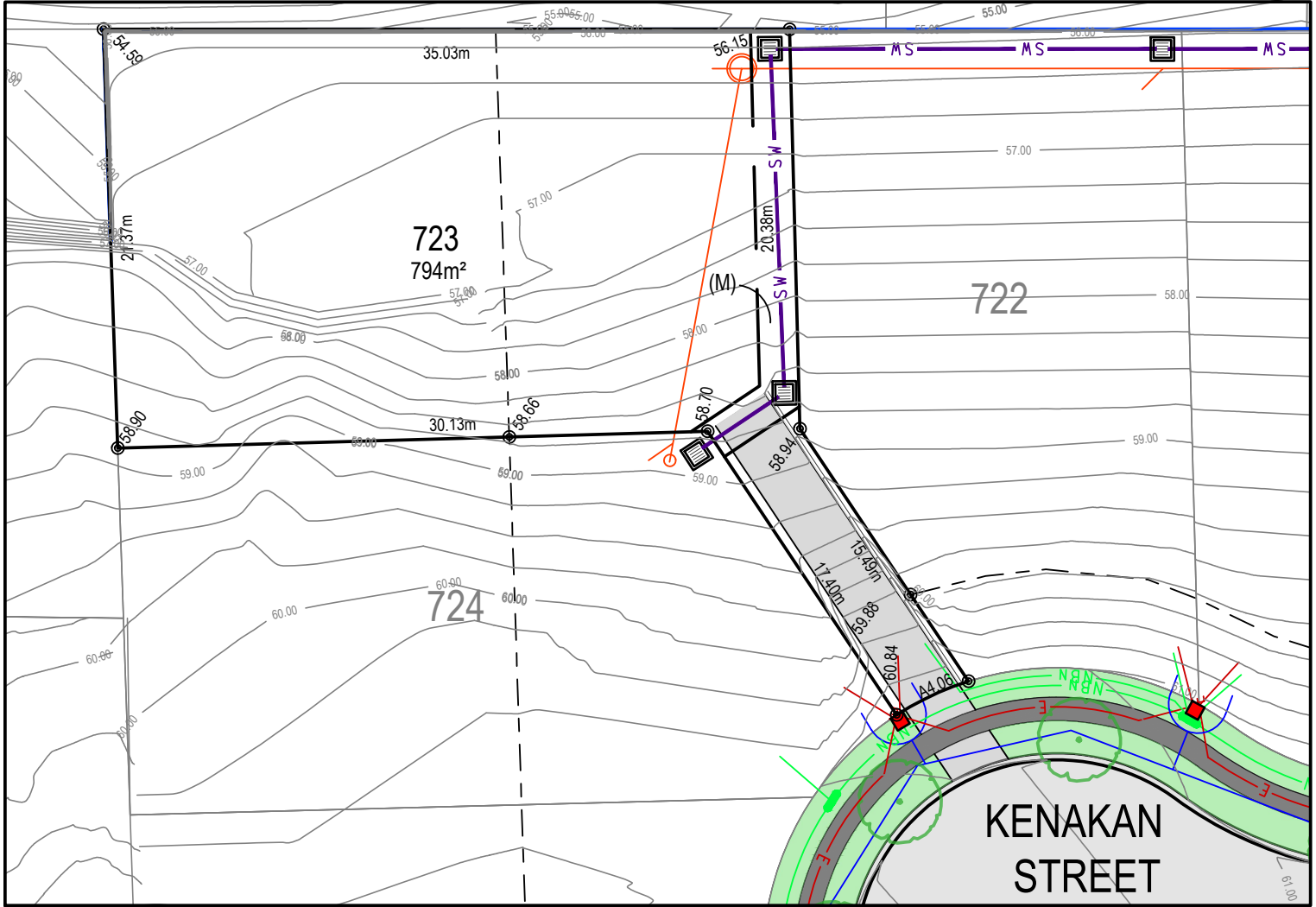
## MASTER PLAN



## STAGE PLAN



## PRELIMINARY SITE ANALYSIS PLAN



- LEGEND:**
- BATTER INTERFACE
  - RETAINING WALL
  - STORMWATER PIT
  - STORMWATER PIPE
  - SEWERMAIN
  - SEWER MAINTENANCE STRUCTURE
  - SEWER JUNCTION
  - WATERMAIN
  - HYDRANT, STOP VALVE
  - TELSTRA / NBN
  - TELSTRA / NBN PIT
  - UNDER GROUND POWER
  - ELECTRICITY PILLAR
  - ELECTRICAL EASEMENT
  - LIGHT POLE
  - RESTRICTION ON THE USE OF LAND
  - STREET TREES
  - ASSET PROTECTION ZONE BDY

### DISCLAIMER/ NOTES:

1. Contours are based on finished design levels and are subject to construction and Council certification and therefore should not be considered as final or as-built.
2. Location of utility services including but not limited to power, water, sewer, communications and gas are subject to construction and supply authority certification and therefore should not be considered as final or as-built.
3. Survey information such as boundary dimensions and areas, easements etc are subject to final survey. Purchasers should refer to the deposited plan and 88B instrument contained in the contract for sale of land for further detailed information.
4. Bushfire and geotechnical classification are provided for convenience. Purchasers should refer to referenced detail specialist reports.
5. This preliminary site analysis plan has been collated from various sources of design information and is provided for convenience to assist purchasers in obtaining quotations/ tenders for dwelling construction.
6. This document does not form part of the contract of sale of the land.
7. Anticipated site classification is H2 or better (to be confirmed at completion of construction).

- (M) - EASEMENT TO DRAIN WATER 2 WIDE
- (N) - RESTRICTION ON USE OF LAND 0.9 WIDE
- (P) - EASEMENT FOR CONSTRUCTION AND MAINTENANCE 0.9 WIDE
- (E2) - RESTRICTION ON USE OF LAND 'NO BUILD' ENVELOPE AND VMP
- \* GENERAL RESTRICTION ON USE OF LAND EFFECTS ALL LOTS

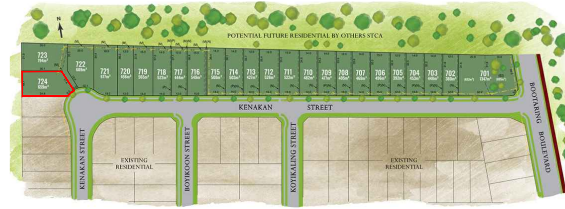
REVISION/S: NSW201403\_STAGE7\_SALES\_REV6  
 DATE: 12 AUGUST 2022  
 BY: ACOR CONSULTANTS PTY LTD

# LOT 724, KENAKAN STREET, EDGEWORTH

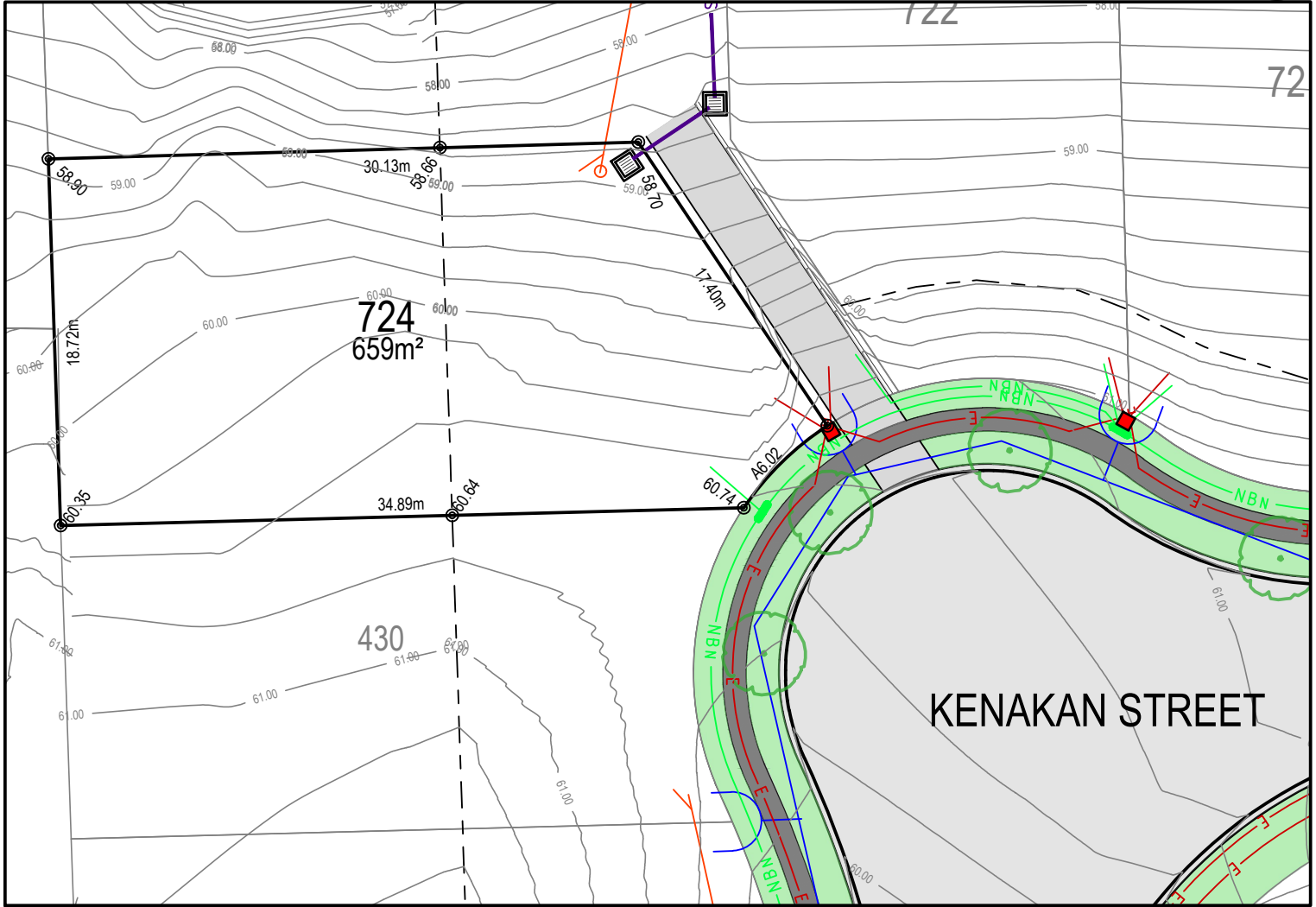
## MASTER PLAN



## STAGE PLAN



## PRELIMINARY SITE ANALYSIS PLAN



- LEGEND:**
- BATTER INTERFACE
  - RETAINING WALL
  - STORMWATER PIT
  - SV— STORMWATER PIPE
  - S— SEWERMAIN
  - SEWER MAINTENANCE STRUCTURE
  - S— SEWER JUNCTION
  - W— WATERMAIN
  - X HYDRANT, STOP VALVE
  - NBN— TELSTRA / NBN
  - TELSTRA / NBN PIT
  - E— UNDER GROUND POWER
  - ELECTRICITY PILLAR
  - ELECTRICAL EASEMENT
  - LIGHT POLE
  - RESTRICTION ON THE USE OF LAND
  - STREET TREES
  - ASSET PROTECTION ZONE BDY

### DISCLAIMER/ NOTES:

1. Contours are based on finished design levels and are subject to construction and Council certification and therefore should not be considered as final or as-built.
2. Location of utility services including but not limited to power, water, sewer, communications and gas are subject to construction and supply authority certification and therefore should not be considered as final or as-built.
3. Survey information such as boundary dimensions and areas, easements etc are subject to final survey. Purchasers should refer to the deposited plan and 88B instrument contained in the contract for sale of land for further detailed information.
4. Bushfire and geotechnical classification are provided for convenience. Purchasers should refer to referenced detail specialist reports.
5. This preliminary site analysis plan has been collated from various sources of design information and is provided for convenience to assist purchasers in obtaining quotations/ tenders for dwelling construction.
6. This document does not form part of the contract of sale of the land.
7. Anticipated site classification is H2 or better (to be confirmed at completion of construction).

- (M) - EASEMENT TO DRAIN WATER 2 WIDE
- (N) - RESTRICTION ON USE OF LAND 0.9 WIDE
- (P) - EASEMENT FOR CONSTRUCTION AND MAINTENANCE 0.9 WIDE
- (E2) - RESTRICTION ON USE OF LAND 'NO BUILD' ENVELOPE AND VMP
- \* GENERAL RESTRICTION ON USE OF LAND EFFECTS ALL LOTS

REVISION/S: NSW201403\_STAGE7\_SALES\_REV6  
 DATE: 12 AUGUST 2022  
 BY: ACOR CONSULTANTS PTY LTD