

TURN-KEY PACKAGE

\$ 895,000

Carnelian
PROJECTS



Photos indicative only

Lot 426 Brush Creek Estate, Edgeworth

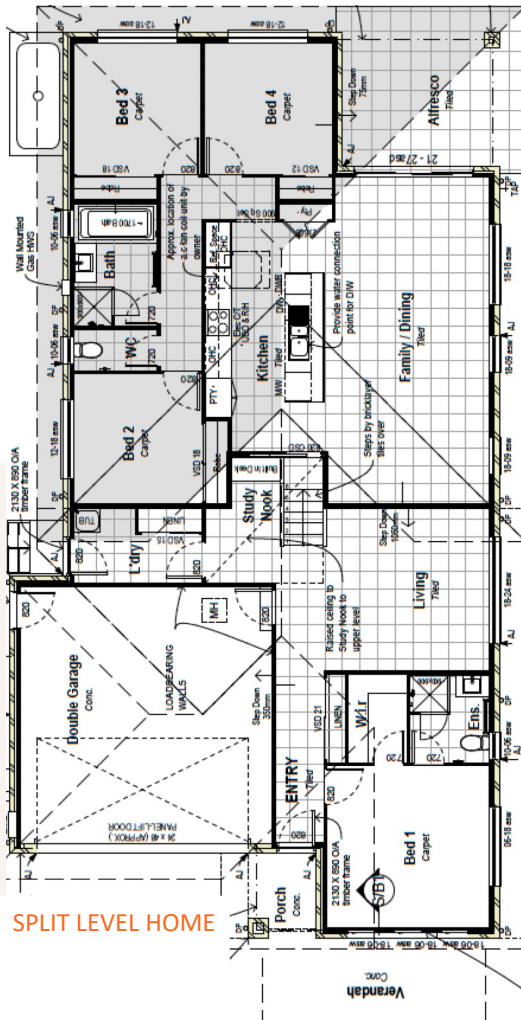
Land size: 491m²
House size: 206m²
(front porch extra)

BONUS INCLUSIONS

Ducted air
900mm appliances
Gooseneck tap in kitchen
2 in 1 shower rose for ensuite

WHAT IS A TURN-KEY PACKAGE?

- ✓ dishwasher is included
- ✓ oven, rangehood and cooktop are included
- ✓ carpet and tiles are included
- ✓ blinds and downlights are included
- ✓ the alfresco is concreted and covered
- ✓ the driveway is included
- ✓ the fencing, retaining and all turf is included
- ✓ the home will be completely finished inside and out



SPLIT LEVEL HOME

Contact Kerri-Ann: 0402 107 194

carnelianprojects.com.au

At Carnelian Projects we're your 'building buddy', guiding you through the process until handover.