

# TURN-KEY PACKAGE

## \$ 864,000

Land price: \$455,000  
Build price: \$409,000

# Carnelian PROJECTS



## Lot 425 & 426 Brush Creek Estate, Edgeworth

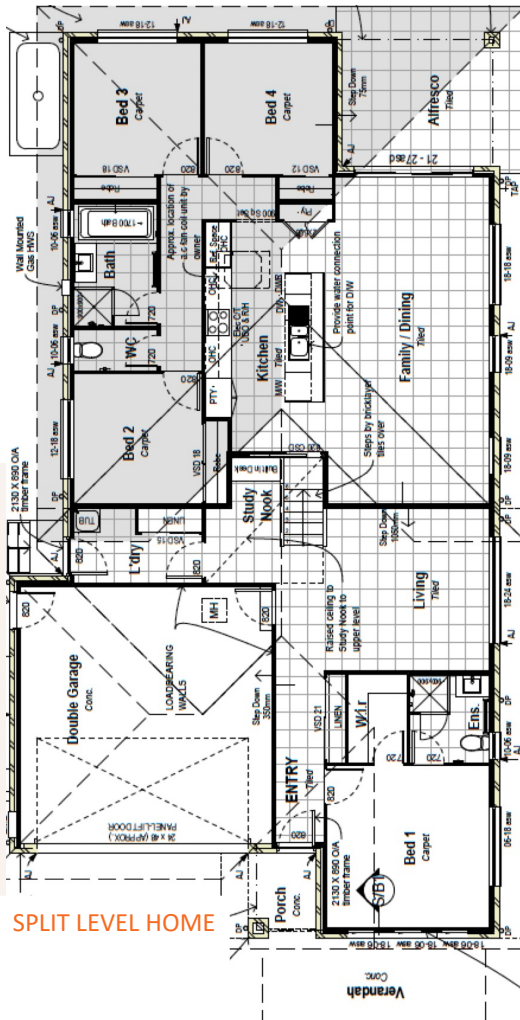
Land size: 491m<sup>2</sup>  
House size: 206m<sup>2</sup>  
(front porch extra)

### BONUS INCLUSIONS

Ducted air  
900mm appliances  
Gooseneck tap in kitchen  
2 in 1 shower rose for ensuite

### WHAT IS A TURN-KEY PACKAGE?

- ✓ dishwasher is included
- ✓ oven, rangehood and cooktop are included
- ✓ carpet and tiles are included
- ✓ blinds and downlights are included
- ✓ the alfresco is concreted and covered
- ✓ the driveway is included
- ✓ the fencing, retaining and all turf is included
- ✓ the home will be completely finished inside and out



SPLIT LEVEL HOME

Contact Kerri-Ann: 0402 107 194  
carnelianprojects.com.au

At Carnelian Projects we're your 'building buddy', guiding you through the process until handover.