

TURN-KEY PACKAGE

\$ 885,000

Carnelian
PROJECTS



SEPARATE
LIVING

WALK-IN
PANTRY

4 BDR

DOUBLE
GARAGE

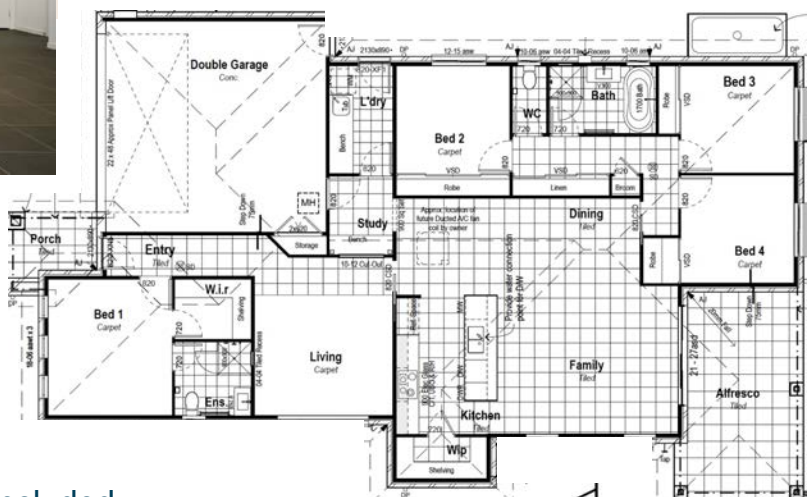
Photos indicative only



House size: 217m²

Land size: 551m²

Lot 201, Brush Creek, Edgeworth



WHAT IS A TURN-KEY PACKAGE?

- ✓ dishwasher is included
- ✓ oven, rangehood and cooktop are included
- ✓ carpet and tiles are included
- ✓ blinds and downlights are included
- ✓ the alfresco is concreted and covered
- ✓ the driveway is included
- ✓ the fencing, retaining and all turf is included
- ✓ the home will be completely finished inside and out

Contact Kerri-Ann:

0402 107 194

carnelianprojects.com.au

At Carnelian Projects we're your 'building buddy', guiding you through the process until handover.