

LOT 301, TARKALONG STREET, EDGEWORTH

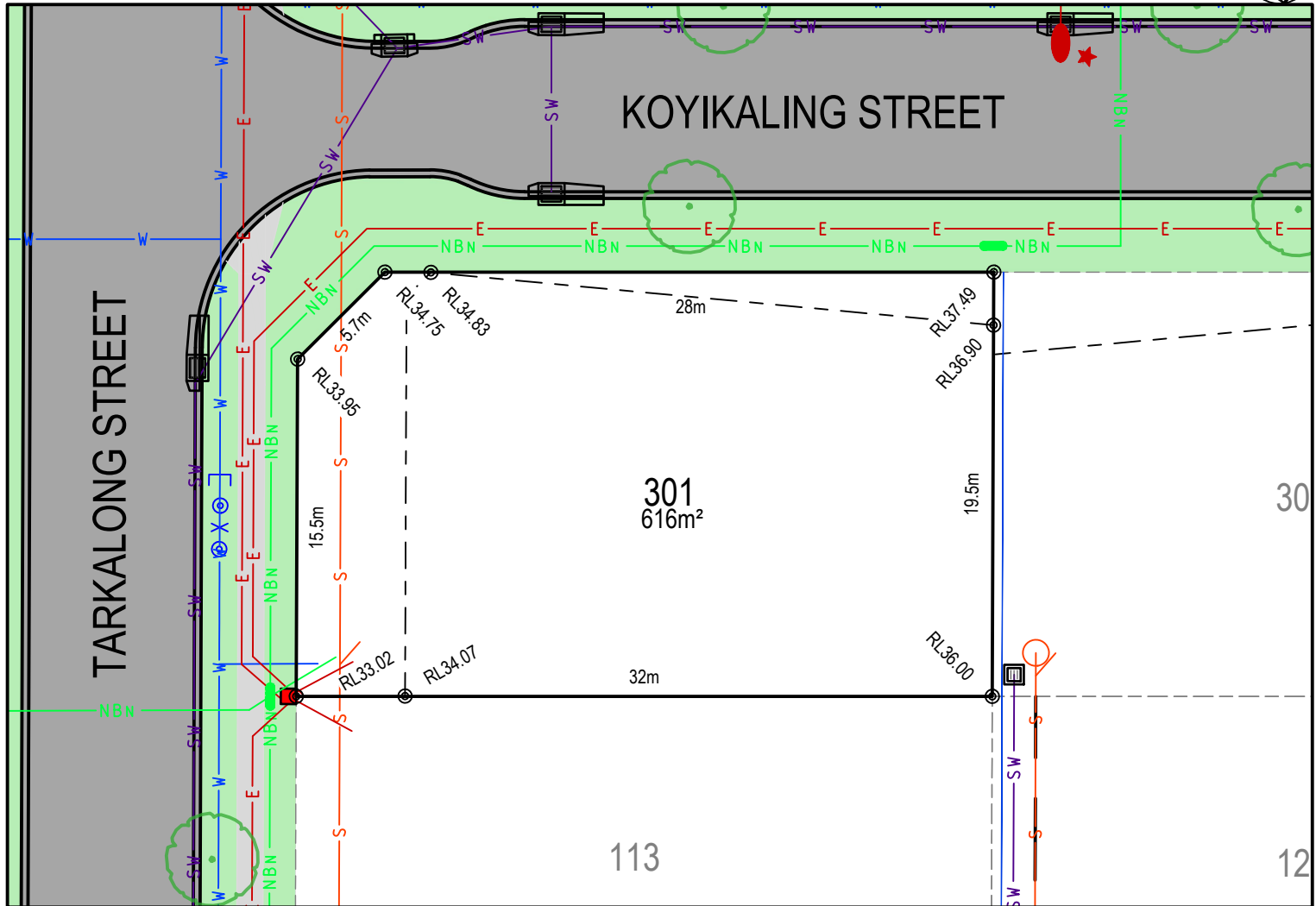
MASTER PLAN



STAGE PLAN



PRELIMINARY SITE ANALYSIS PLAN



LEGEND:

- BATTER INTERFACE
- RETAINING WALL
- STORMWATER PIT
- SW — STORMWATER PIPE
- S — SEWERMAIN
- S — SEWER MAINTENANCE STRUCTURE
- S — SEWER JUNCTION
- W — WATERMAIN
- O X — HYDRANT, STOP VALVE
- NBN — TELSTRA / NBN
- NBN — TELSTRA / NBN PIT
- E — UNDER GROUND POWER
- E — ELECTRICITY PILLAR
- E — ELECTRICAL EASEMENT
- E — LIGHT POLE
- R — RESTRICTION ON THE USE OF LAND
- S — STREET TREES
- S — ASSET PROTECTION ZONE BDY

DISCLAIMER/ NOTES:

1. Contours are based on finished design levels and are subject to construction and Council certification and therefore should not be considered as final or as-built.
2. Location of utility services including but not limited to power, water, sewer, communications and gas are subject to construction and supply authority certification and therefore should not be considered as final or as-built.
3. Survey information such as boundary dimensions and areas, easements etc are subject to final survey. Purchasers should refer to the deposited plan and 88B instrument contained in the contract for sale of land for further detailed information.
4. Bushfire and geotechnical classification are provided for convenience. Purchasers should refer to referenced detail specialist reports.
5. This preliminary site analysis plan has been collated from various sources of design information and is provided for convenience to assist purchasers in obtaining quotations/ tenders for dwelling construction.
6. This document does not form part of the contract of sale of the land.
7. Anticipated site classification is H2 or better (to be confirmed at completion of construction).

- (A) - EASEMENT TO DRAIN WATER 2 WIDE
- (B) - RESTRICTION ON THE USE OF LAND 0.9 WIDE
- (E) - EASEMENT FOR CONSTRUCTION AND MAINTENANCE 0.9 WIDE

REVISION/S: HD27 STAGE 3 MARKETING r1

DATE: 5th OCTOBER 2021

BY: ACOR CONSULTANTS PTY LTD

brushcreek.com.au



A QUALITY
MCCLOY
GROUP
PROJECT

LOT 302, KAROBARLING STREET, EDGEWORTH

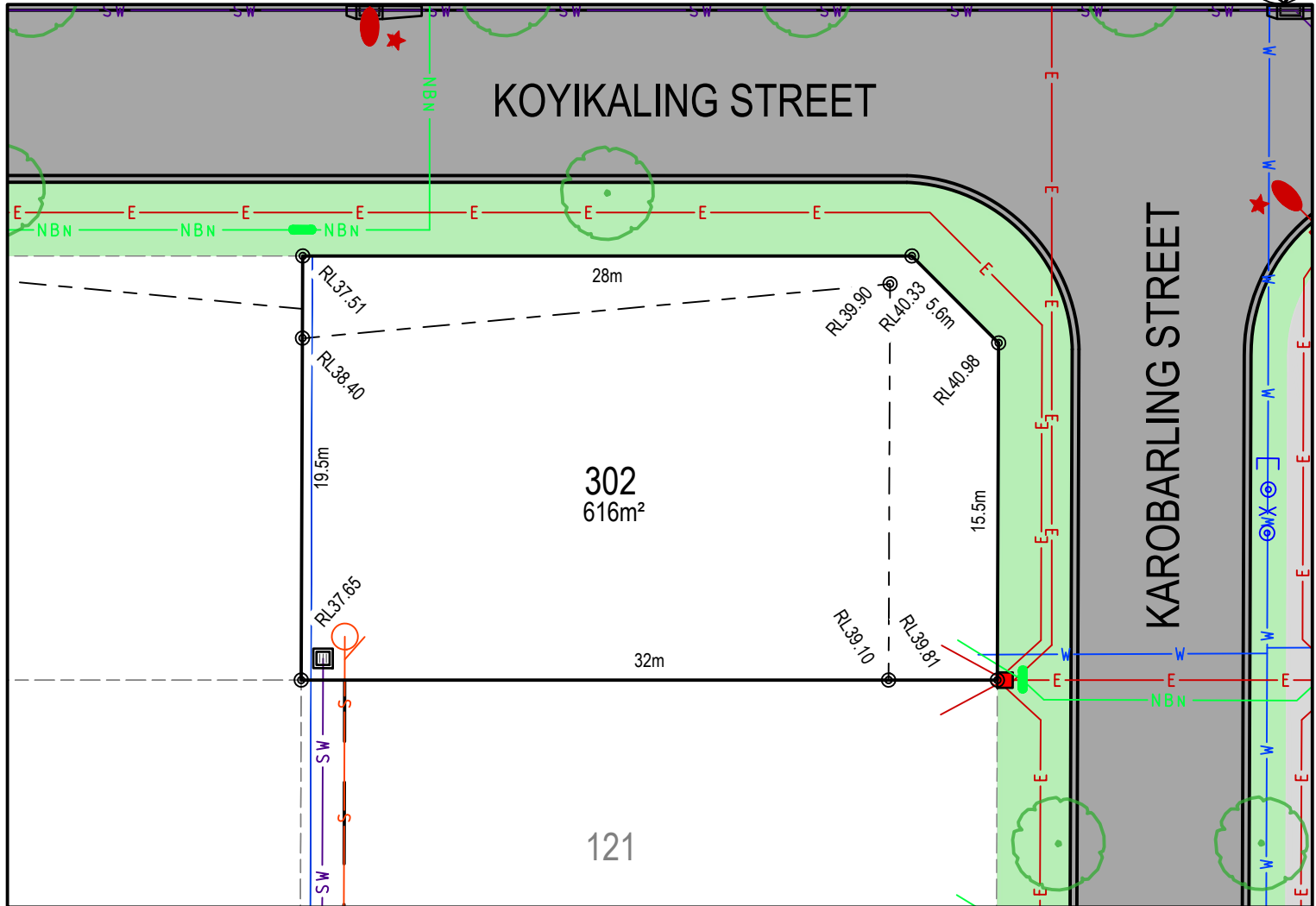
MASTER PLAN



STAGE PLAN



PRELIMINARY SITE ANALYSIS PLAN



LEGEND:

- BATTER INTERFACE
- RETAINING WALL
- STORMWATER PIT
- SW — STORMWATER PIPE
- S — SEWERMAIN
- S — SEWER MAINTENANCE STRUCTURE
- S — SEWER JUNCTION
- W — WATERMAIN
- O X — HYDRANT, STOP VALVE
- NBN — TELSTRA / NBN
- NBN — TELSTRA / NBN PIT
- E — UNDER GROUND POWER
- E — ELECTRICITY PILLAR
- E — ELECTRICAL EASEMENT
- E — LIGHT POLE
- E — RESTRICTION ON THE USE OF LAND
- E — STREET TREES
- E — ASSET PROTECTION ZONE BDY

DISCLAIMER/ NOTES:

1. Contours are based on finished design levels and are subject to construction and Council certification and therefore should not be considered as final or as-built.
2. Location of utility services including but not limited to power, water, sewer, communications and gas are subject to construction and supply authority certification and therefore should not be considered as final or as-built.
3. Survey information such as boundary dimensions and areas, easements etc are subject to final survey. Purchasers should refer to the deposited plan and 88B instrument contained in the contract for sale of land for further detailed information.
4. Bushfire and geotechnical classification are provided for convenience. Purchasers should refer to referenced detail specialist reports.
5. This preliminary site analysis plan has been collated from various sources of design information and is provided for convenience to assist purchasers in obtaining quotations/ tenders for dwelling construction.
6. This document does not form part of the contract of sale of the land.
7. Anticipated site classification is H2 or better (to be confirmed at completion of construction).

- (A) - EASEMENT TO DRAIN WATER 2 WIDE
- (B) - RESTRICTION ON THE USE OF LAND 0.9 WIDE
- (E) - EASEMENT FOR CONSTRUCTION AND MAINTENANCE 0.9 WIDE

REVISION/S: HD27 STAGE 3 MARKETING r1

DATE: 5th OCTOBER 2021

BY: ACOR CONSULTANTS PTY LTD

brushcreek.com.au



A QUALITY
MCCLOY
GROUP
PROJECT

LOT 303, KAROBARLING STREET, EDGEWORTH

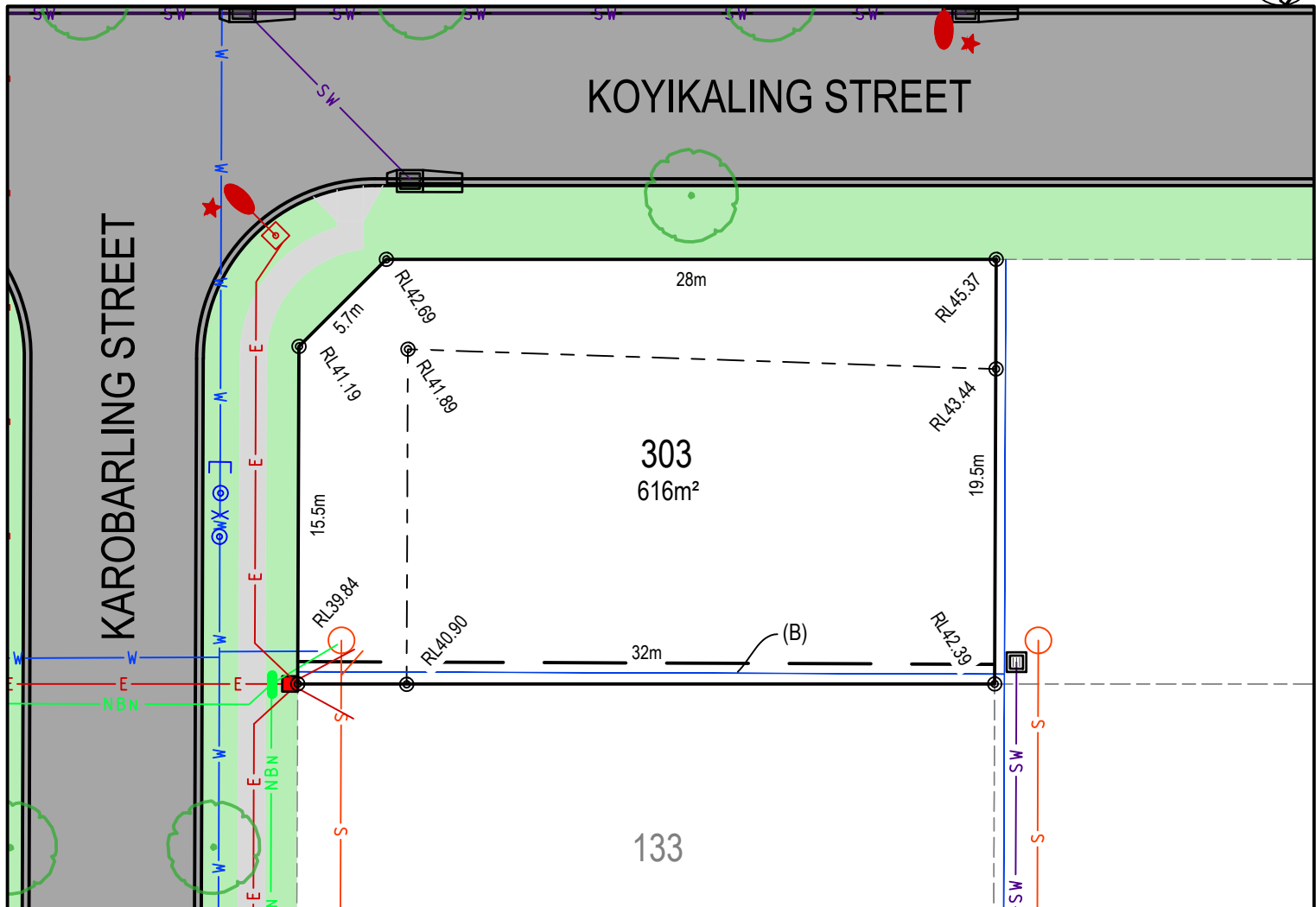
MASTER PLAN



STAGE PLAN



PRELIMINARY SITE ANALYSIS PLAN



LEGEND:

- BATTER INTERFACE
- RETAINING WALL
- STORMWATER PIT
- SW — STORMWATER PIPE
- S — SEWERMAIN
- S — SEWER MAINTENANCE STRUCTURE
- S — SEWER JUNCTION
- W — WATERMAIN
- O X — HYDRANT, STOP VALVE
- NBN — TELSTRA / NBN
- NBN — TELSTRA / NBN PIT
- E — UNDER GROUND POWER
- E — ELECTRICITY PILLAR
- E — ELECTRICAL EASEMENT
- L — LIGHT POLE
- R — RESTRICTION ON THE USE OF LAND
- T — STREET TREES
- A — ASSET PROTECTION ZONE BDY

DISCLAIMER/ NOTES:

1. Contours are based on finished design levels and are subject to construction and Council certification and therefore should not be considered as final or as-built.
2. Location of utility services including but not limited to power, water, sewer, communications and gas are subject to construction and supply authority certification and therefore should not be considered as final or as-built.
3. Survey information such as boundary dimensions and areas, easements etc are subject to final survey. Purchasers should refer to the deposited plan and 88B instrument contained in the contract for sale of land for further detailed information.
4. Bushfire and geotechnical classification are provided for convenience. Purchasers should refer to referenced detail specialist reports.
5. This preliminary site analysis plan has been collated from various sources of design information and is provided for convenience to assist purchasers in obtaining quotations/ tenders for dwelling construction.
6. This document does not form part of the contract of sale of the land.
7. Anticipated site classification is H2 or better (to be confirmed at completion of construction).

- (A) - EASEMENT TO DRAIN WATER 2 WIDE
 (B) - RESTRICTION ON THE USE OF LAND 0.9 WIDE
 (E) - EASEMENT FOR CONSTRUCTION AND MAINTENANCE 0.9 WIDE

REVISION/S: HD27 STAGE 3 MARKETING r1
 DATE: 5th OCTOBER 2021
 BY: ACOR CONSULTANTS PTY LTD

brushcreek.com.au



LOT 304, TARKALONG STREET, EDGEWORTH

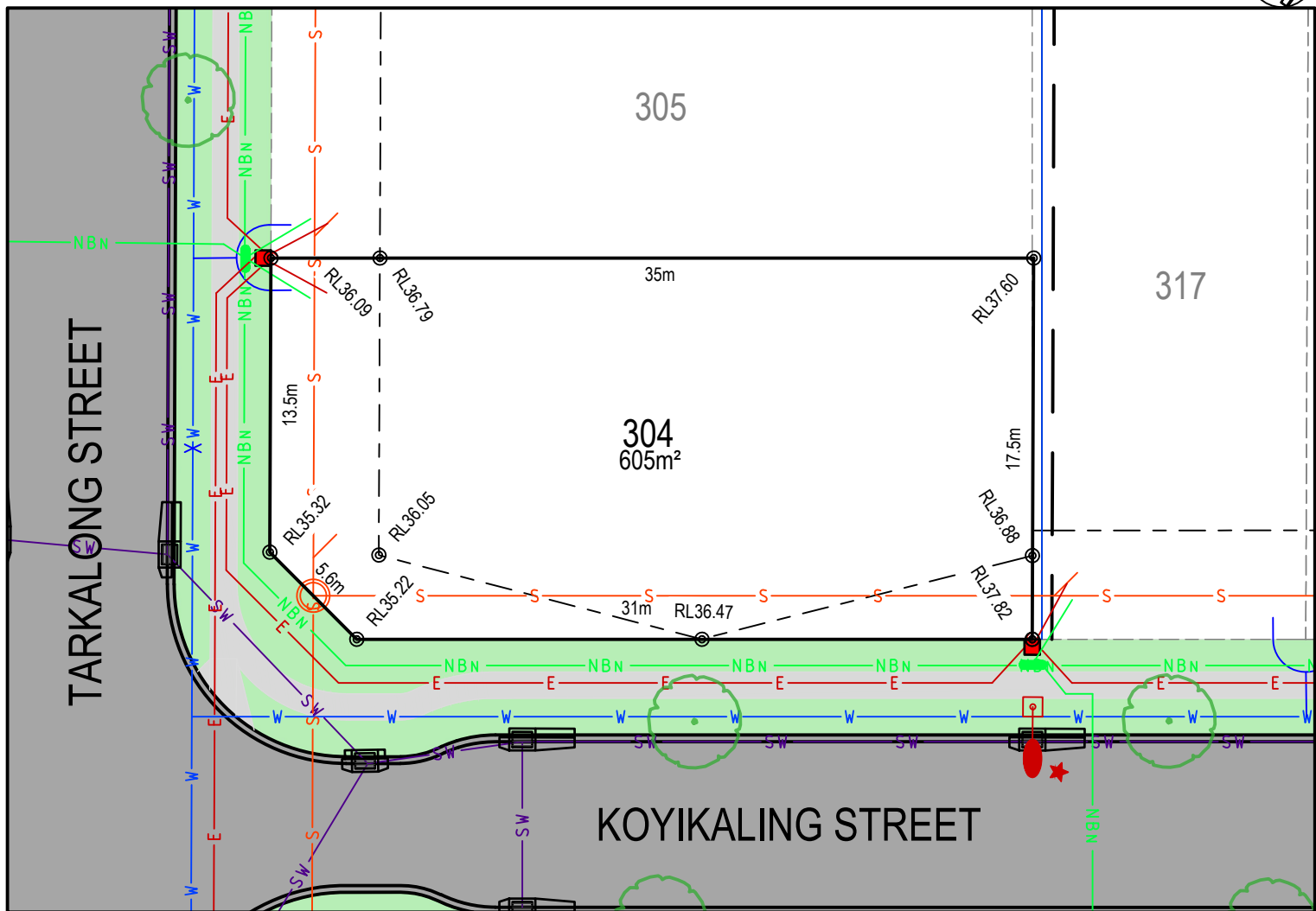
MASTER PLAN



STAGE PLAN



PRELIMINARY SITE ANALYSIS PLAN



LEGEND:

- BATTER INTERFACE
- RETAINING WALL
- STORMWATER PIT
- SW — STORMWATER PIPE
- S — SEWERMAIN
- S — SEWER MAINTENANCE STRUCTURE
- S — SEWER JUNCTION
- W — WATERMAIN
- O X — HYDRANT, STOP VALVE
- NBN — TELSTRA / NBN
- NBN — TELSTRA / NBN PIT
- E — UNDER GROUND POWER
- E — ELECTRICITY PILLAR
- E — ELECTRICAL EASEMENT
- E — LIGHT POLE
- R — RESTRICTION ON THE USE OF LAND
- S — STREET TREES
- S — ASSET PROTECTION ZONE BDY

DISCLAIMER/ NOTES:

1. Contours are based on finished design levels and are subject to construction and Council certification and therefore should not be considered as final or as-built.
2. Location of utility services including but not limited to power, water, sewer, communications and gas are subject to construction and supply authority certification and therefore should not be considered as final or as-built.
3. Survey information such as boundary dimensions and areas, easements etc are subject to final survey. Purchasers should refer to the deposited plan and 88B instrument contained in the contract for sale of land for further detailed information.
4. Bushfire and geotechnical classification are provided for convenience. Purchasers should refer to referenced detail specialist reports.
5. This preliminary site analysis plan has been collated from various sources of design information and is provided for convenience to assist purchasers in obtaining quotations/ tenders for dwelling construction.
6. This document does not form part of the contract of sale of the land.
7. Anticipated site classification is H2 or better (to be confirmed at completion of construction).

- (A) - EASEMENT TO DRAIN WATER 2 WIDE
 (B) - RESTRICTION ON THE USE OF LAND 0.9 WIDE
 (E) - EASEMENT FOR CONSTRUCTION AND MAINTENANCE 0.9 WIDE

REVISION/S: HD27 STAGE 3 MARKETING r1
 DATE: 5th OCTOBER 2021
 BY: ACOR CONSULTANTS PTY LTD

brushcreek.com.au



A QUALITY
MCCLOY
GROUP
PROJECT

LOT 305, TARKALONG STREET, EDGEWORTH

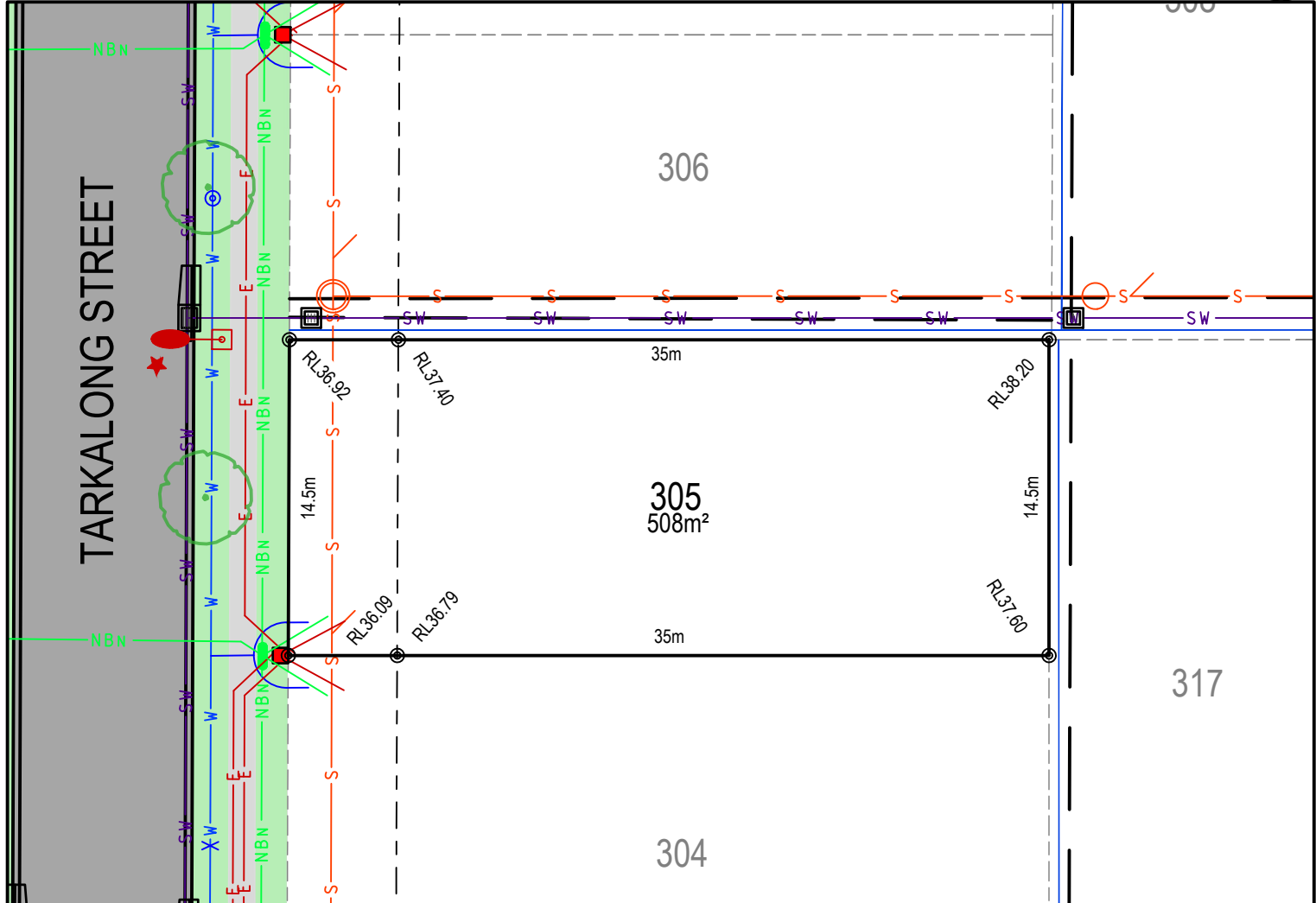
MASTER PLAN



STAGE PLAN



PRELIMINARY SITE ANALYSIS PLAN



LEGEND:

- BATTER INTERFACE
- RETAINING WALL
- STORMWATER PIT
- SW — STORMWATER PIPE
- S — SEWERMAIN
- S — SEWER MAINTENANCE STRUCTURE
- S — SEWER JUNCTION
- W — WATERMAIN
- O X — HYDRANT, STOP VALVE
- NBN — TELSTRA / NBN
- NBN — TELSTRA / NBN PIT
- E — UNDER GROUND POWER
- E — ELECTRICITY PILLAR
- E — ELECTRICAL EASEMENT
- E — LIGHT POLE
- E — RESTRICTION ON THE USE OF LAND
- E — STREET TREES
- E — ASSET PROTECTION ZONE BDY

DISCLAIMER/ NOTES:

1. Contours are based on finished design levels and are subject to construction and Council certification and therefore should not be considered as final or as-built.
2. Location of utility services including but not limited to power, water, sewer, communications and gas are subject to construction and supply authority certification and therefore should not be considered as final or as-built.
3. Survey information such as boundary dimensions and areas, easements etc are subject to final survey. Purchasers should refer to the deposited plan and 88B instrument contained in the contract for sale of land for further detailed information.
4. Bushfire and geotechnical classification are provided for convenience. Purchasers should refer to referenced detail specialist reports.
5. This preliminary site analysis plan has been collated from various sources of design information and is provided for convenience to assist purchasers in obtaining quotations/ tenders for dwelling construction.
6. This document does not form part of the contract of sale of the land.
7. Anticipated site classification is H2 or better (to be confirmed at completion of construction).

- (A) - EASEMENT TO DRAIN WATER 2 WIDE
- (B) - RESTRICTION ON THE USE OF LAND 0.9 WIDE
- (E) - EASEMENT FOR CONSTRUCTION AND MAINTENANCE 0.9 WIDE

REVISION/S: HD27 STAGE 3 MARKETING r1

DATE: 5th OCTOBER 2021

BY: ACOR CONSULTANTS PTY LTD

brushcreek.com.au



A QUALITY
MCCLOY
GROUP
PROJECT

LOT 306, TARKALONG STREET, EDGEWORTH

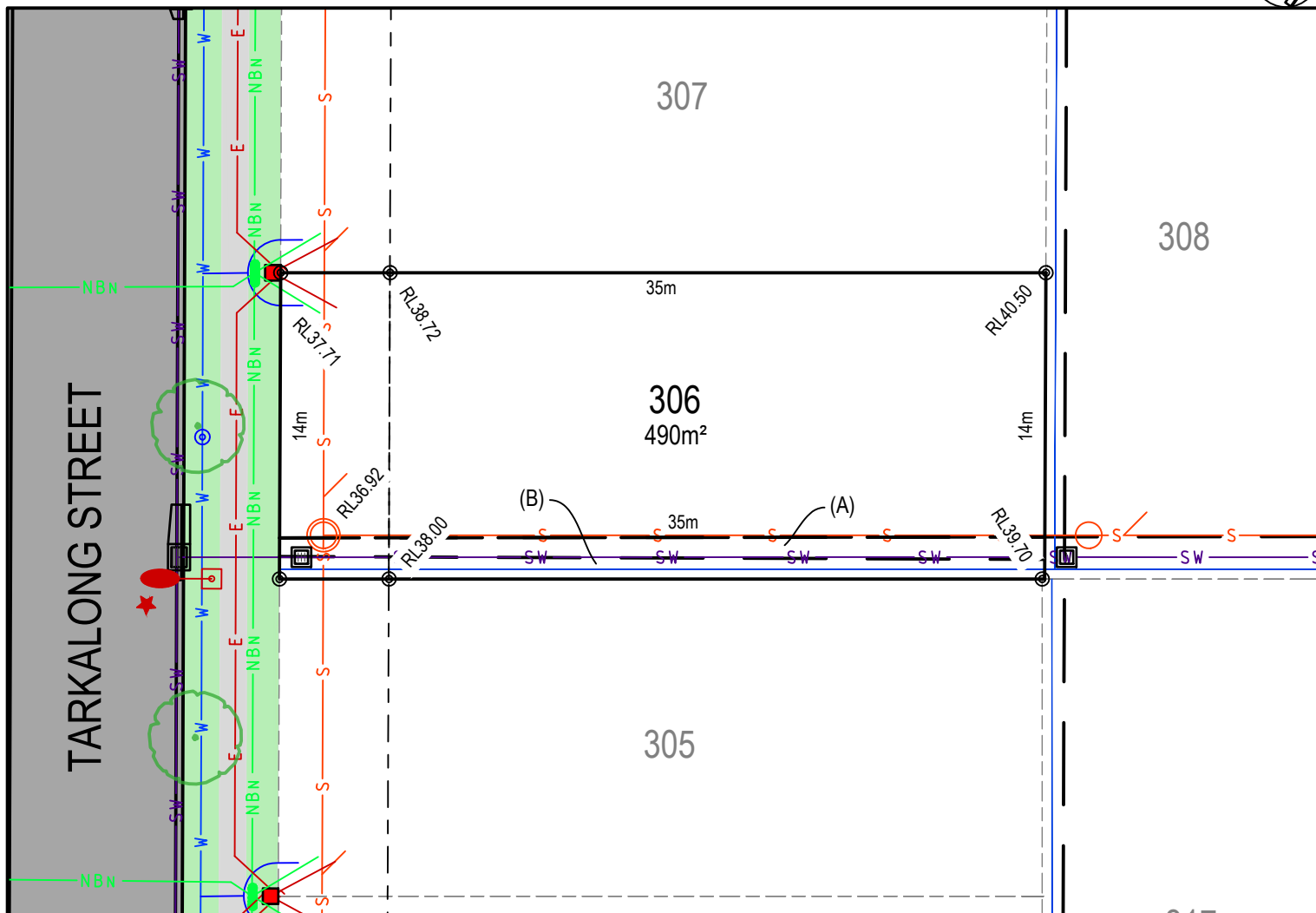
MASTER PLAN



STAGE PLAN



PRELIMINARY SITE ANALYSIS PLAN



LEGEND:

- BATTER INTERFACE
- RETAINING WALL
- STORMWATER PIT
- SW — STORMWATER PIPE
- S — SEWERMAIN
- S — SEWER MAINTENANCE STRUCTURE
- S — SEWER JUNCTION
- W — WATERMAIN
- O X — HYDRANT, STOP VALVE
- NBN — TELSTRA / NBN
- NBN — TELSTRA / NBN PIT
- E — UNDER GROUND POWER
- E — ELECTRICITY PILLAR
- E — ELECTRICAL EASEMENT
- E — LIGHT POLE
- E — RESTRICTION ON THE USE OF LAND
- E — STREET TREES
- E — ASSET PROTECTION ZONE BDY

DISCLAIMER/ NOTES:

1. Contours are based on finished design levels and are subject to construction and Council certification and therefore should not be considered as final or as-built.
2. Location of utility services including but not limited to power, water, sewer, communications and gas are subject to construction and supply authority certification and therefore should not be considered as final or as-built.
3. Survey information such as boundary dimensions and areas, easements etc are subject to final survey. Purchasers should refer to the deposited plan and 88B instrument contained in the contract for sale of land for further detailed information.
4. Bushfire and geotechnical classification are provided for convenience. Purchasers should refer to referenced detail specialist reports.
5. This preliminary site analysis plan has been collated from various sources of design information and is provided for convenience to assist purchasers in obtaining quotations/ tenders for dwelling construction.
6. This document does not form part of the contract of sale of the land.
7. Anticipated site classification is H2 or better (to be confirmed at completion of construction).

- (A) - EASEMENT TO DRAIN WATER 2 WIDE
 (B) - RESTRICTION ON THE USE OF LAND 0.9 WIDE
 (E) - EASEMENT FOR CONSTRUCTION AND MAINTENANCE 0.9 WIDE

REVISION/S: HD27 STAGE 3 MARKETING r1
 DATE: 5th OCTOBER 2021
 BY: ACOR CONSULTANTS PTY LTD

LOT 308, BOYIKOON STREET, EDGEWORTH

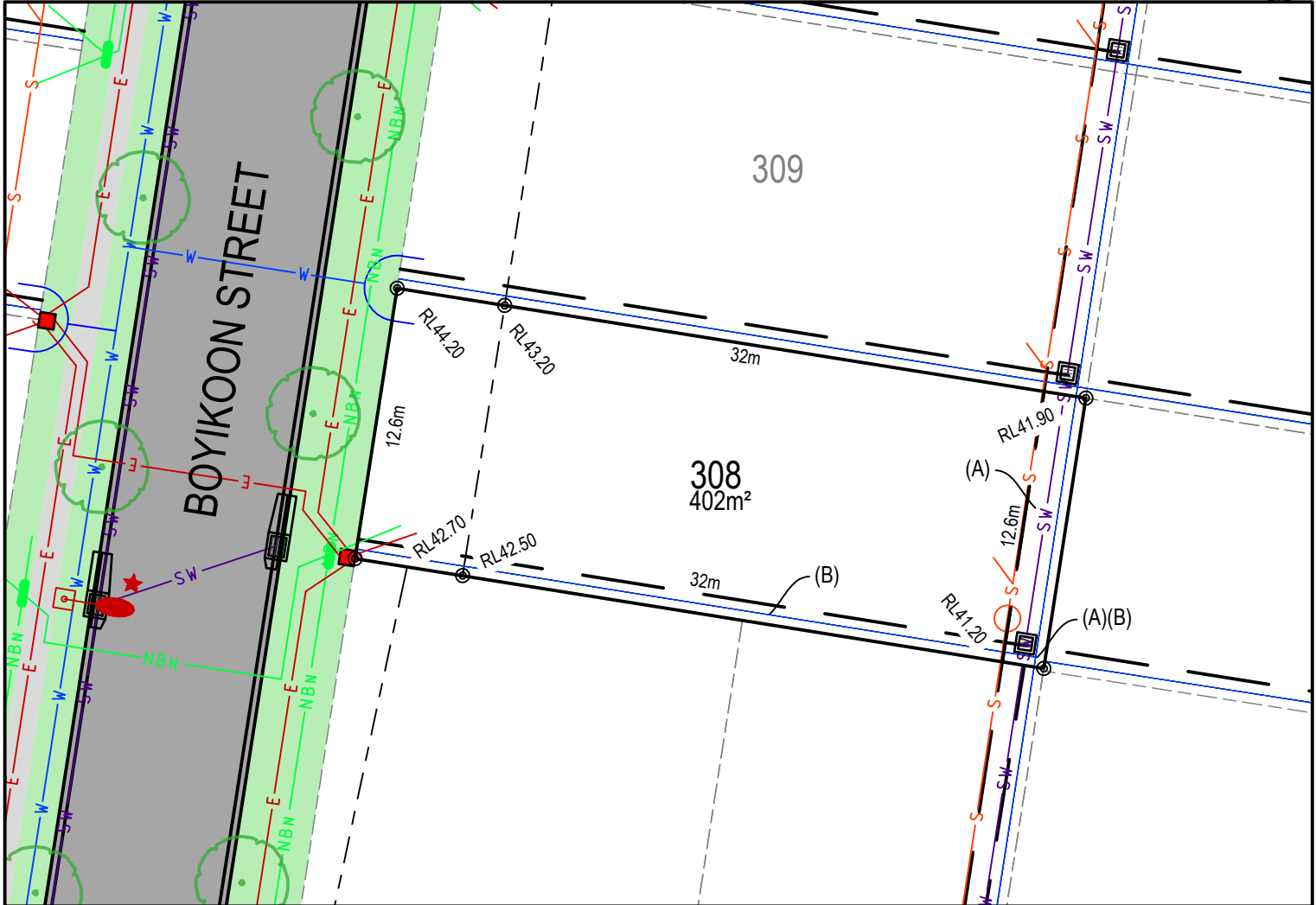
MASTER PLAN



STAGE PLAN



PRELIMINARY SITE ANALYSIS PLAN



LEGEND:

	BATTER INTERFACE
	RETAINING WALL
	STORMWATER PIT
	STORMWATER PIPE
	SEWERMAIN
	SEWER MAINTENANCE STRUCTURE
	SEWER JUNCTION
	WATERMAIN
	HYDRANT, STOP VALVE
	TELSTRA / NBN
	TELSTRA / NBN PIT
	UNDER GROUND POWER
	ELECTRICITY PILLAR
	ELECTRICAL EASEMENT
	LIGHT POLE
	RESTRICTION ON THE USE OF LAND
	STREET TREES
	ASSET PROTECTION ZONE BDY

DISCLAIMER/ NOTES:

1. Contours are based on finished design levels and are subject to construction and Council certification and therefore should not be considered as final or as-built.
2. Location of utility services including but not limited to power, water, sewer, communications and gas are subject to construction and supply authority certification and therefore should not be considered as final or as-built.
3. Survey information such as boundary dimensions and areas, easements etc are subject to final survey. Purchasers should refer to the deposited plan and 88B instrument contained in the contract for sale of land for further detailed information.
4. Bushfire and geotechnical classification are provided for convenience. Purchasers should refer to referenced detail specialist reports.
5. This preliminary site analysis plan has been collated from various sources of design information and is provided for convenience to assist purchasers in obtaining quotations/ tenders for dwelling construction.
6. This document does not form part of the contract of sale of the land.
7. Anticipated site classification is H2 or better (to be confirmed at completion of construction).

(A) - EASEMENT TO DRAIN WATER 2 WIDE
 (B) - RESTRICTION ON THE USE OF LAND 0.9 WIDE
 (E) - EASEMENT FOR CONSTRUCTION AND MAINTENANCE 0.9 WIDE

REVISION/S: HD27 STAGE 3 MARKETING r1
 DATE: 5th OCTOBER 2021
 BY: ACOR CONSULTANTS PTY LTD

brushcreek.com.au



A QUALITY
MCCLOY
GROUP
PROJECT

LOT 309, BOYIKOON STREET, EDGEWORTH

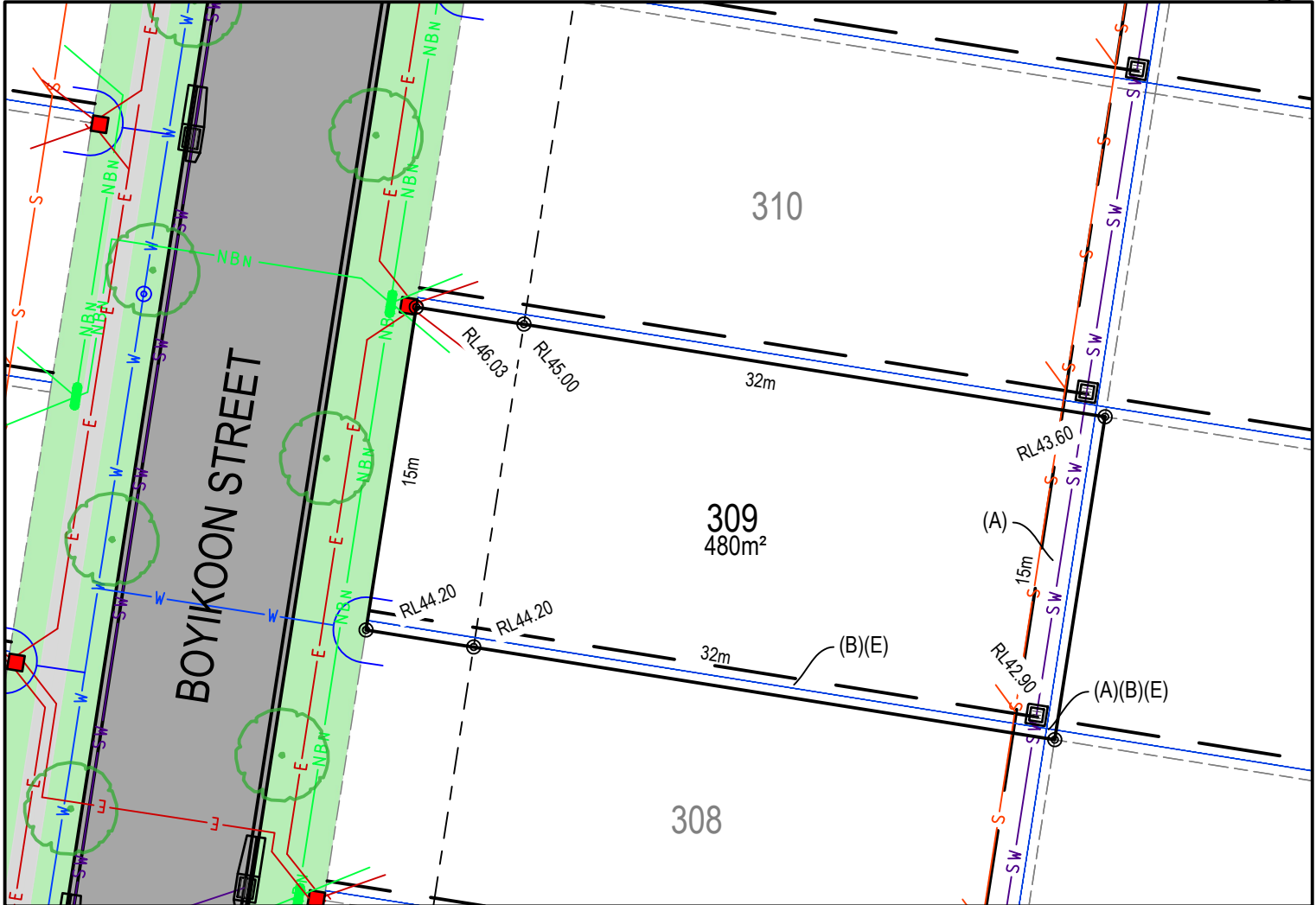
MASTER PLAN



STAGE PLAN



PRELIMINARY SITE ANALYSIS PLAN



- LEGEND:**
- BATTER INTERFACE
 - RETAINING WALL
 - STORMWATER PIT
 - SW — STORMWATER PIPE
 - S — SEWERMAIN
 - ○ — SEWER MAINTENANCE STRUCTURE
 - S — SEWER JUNCTION
 - W — WATERMAIN
 - ○ X — HYDRANT, STOP VALVE
 - NBN — TELSTRA / NBN
 - ○ — TELSTRA / NBN PIT
 - E — UNDER GROUND POWER
 - ■ — ELECTRICITY PILLAR
 - [] — ELECTRICAL EASEMENT
 - ■ — LIGHT POLE
 - — RESTRICTION ON THE USE OF LAND
 - ○ — STREET TREES
 - — ASSET PROTECTION ZONE BDY

DISCLAIMER/ NOTES:

1. Contours are based on finished design levels and are subject to construction and Council certification and therefore should not be considered as final or as-built.
2. Location of utility services including but not limited to power, water, sewer, communications and gas are subject to construction and supply authority certification and therefore should not be considered as final or as-built.
3. Survey information such as boundary dimensions and areas, easements etc are subject to final survey. Purchasers should refer to the deposited plan and 88B instrument contained in the contract for sale of land for further detailed information.
4. Bushfire and geotechnical classification are provided for convenience. Purchasers should refer to referenced detail specialist reports.
5. This preliminary site analysis plan has been collated from various sources of design information and is provided for convenience to assist purchasers in obtaining quotations/ tenders for dwelling construction.
6. This document does not form part of the contract of sale of the land.
7. Anticipated site classification is H2 or better (to be confirmed at completion of construction).

- (A) - EASEMENT TO DRAIN WATER 2 WIDE
 (B) - RESTRICTION ON THE USE OF LAND 0.9 WIDE
 (E) - EASEMENT FOR CONSTRUCTION AND MAINTENANCE 0.9 WIDE

REVISION/S: HD27 STAGE 3 MARKETING r1
 DATE: 5th OCTOBER 2021
 BY: ACOR CONSULTANTS PTY LTD

brushcreek.com.au



A QUALITY
MCCLOY
GROUP
PROJECT

LOT 310, BOYIKOON STREET, EDGEWORTH

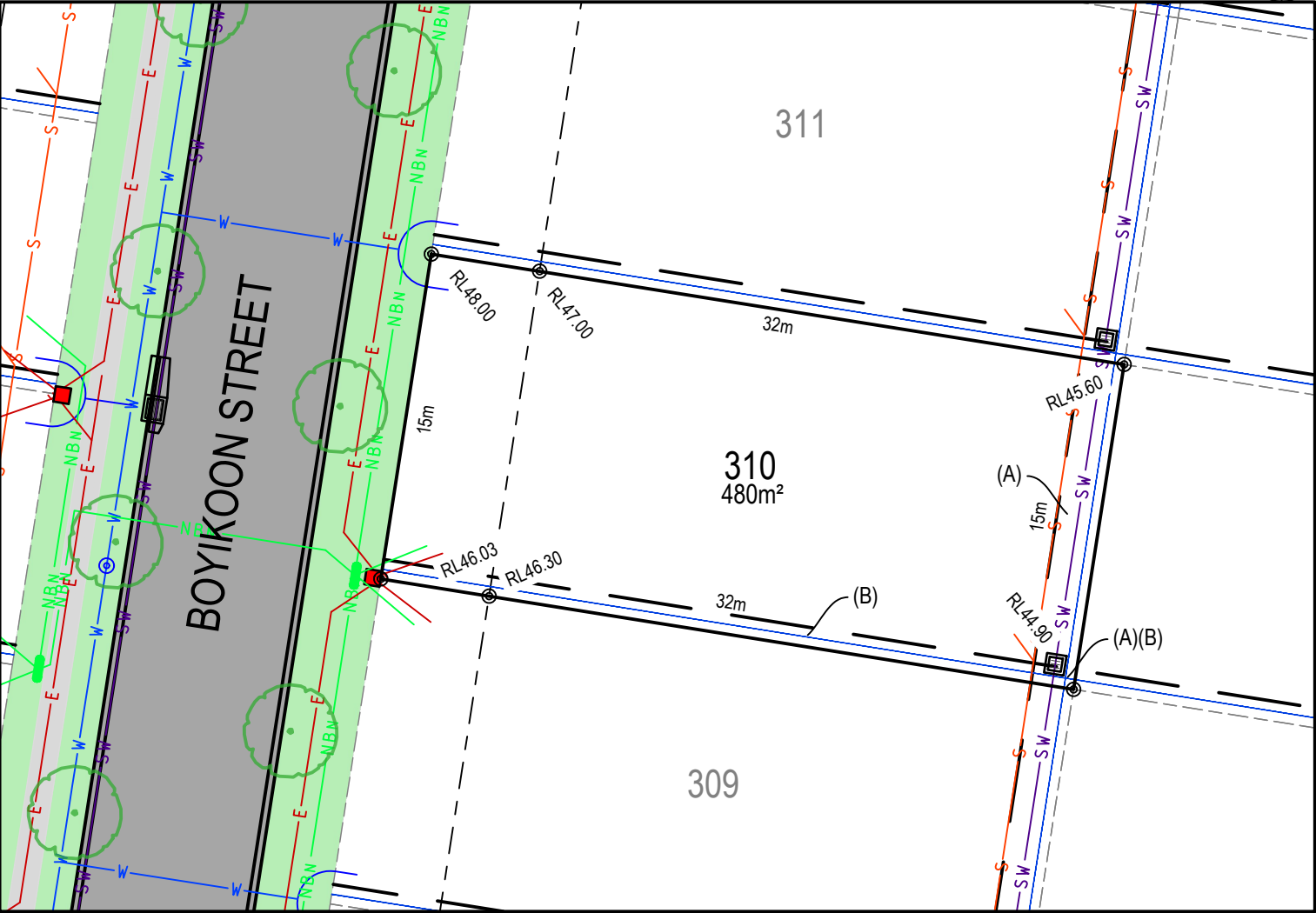
MASTER PLAN



STAGE PLAN



PRELIMINARY SITE ANALYSIS PLAN



- LEGEND:**
- BATTER INTERFACE
 - RETAINING WALL
 - STORMWATER PIT
 - STORMWATER PIPE
 - SEWERMAIN
 - SEWER MAINTENANCE STRUCTURE
 - SEWER JUNCTION
 - WATERMAIN
 - HYDRANT, STOP VALVE
 - TELSTRA / NBN
 - TELSTRA / NBN PIT
 - UNDER GROUND POWER
 - ELECTRICITY PILLAR
 - ELECTRICAL EASEMENT
 - LIGHT POLE
 - RESTRICTION ON THE USE OF LAND
 - STREET TREES
 - ASSET PROTECTION ZONE BDY

- DISCLAIMER/ NOTES:**
- Contours are based on finished design levels and are subject to construction and Council certification and therefore should not be considered as final or as-built.
 - Location of utility services including but not limited to power, water, sewer, communications and gas are subject to construction and supply authority certification and therefore should not be considered as final or as-built.
 - Survey information such as boundary dimensions and areas, easements etc are subject to final survey. Purchasers should refer to the deposited plan and 88B instrument contained in the contract for sale of land for further detailed information.
 - Bushfire and geotechnical classification are provided for convenience. Purchasers should refer to referenced detail specialist reports.
 - This preliminary site analysis plan has been collated from various sources of design information and is provided for convenience to assist purchasers in obtaining quotations/ tenders for dwelling construction.
 - This document does not form part of the contract of sale of the land.
 - Anticipated site classification is H2 or better (to be confirmed at completion of construction).

- (A) - EASEMENT TO DRAIN WATER 2 WIDE
(B) - RESTRICTION ON THE USE OF LAND 0.9 WIDE
(E) - EASEMENT FOR CONSTRUCTION AND MAINTENANCE 0.9 WIDE

REVISION/S: HD27 STAGE 3 MARKETING r1
DATE: 5th OCTOBER 2021
BY: ACOR CONSULTANTS PTY LTD

LOT 311, BOYIKOON STREET, EDGEWORTH

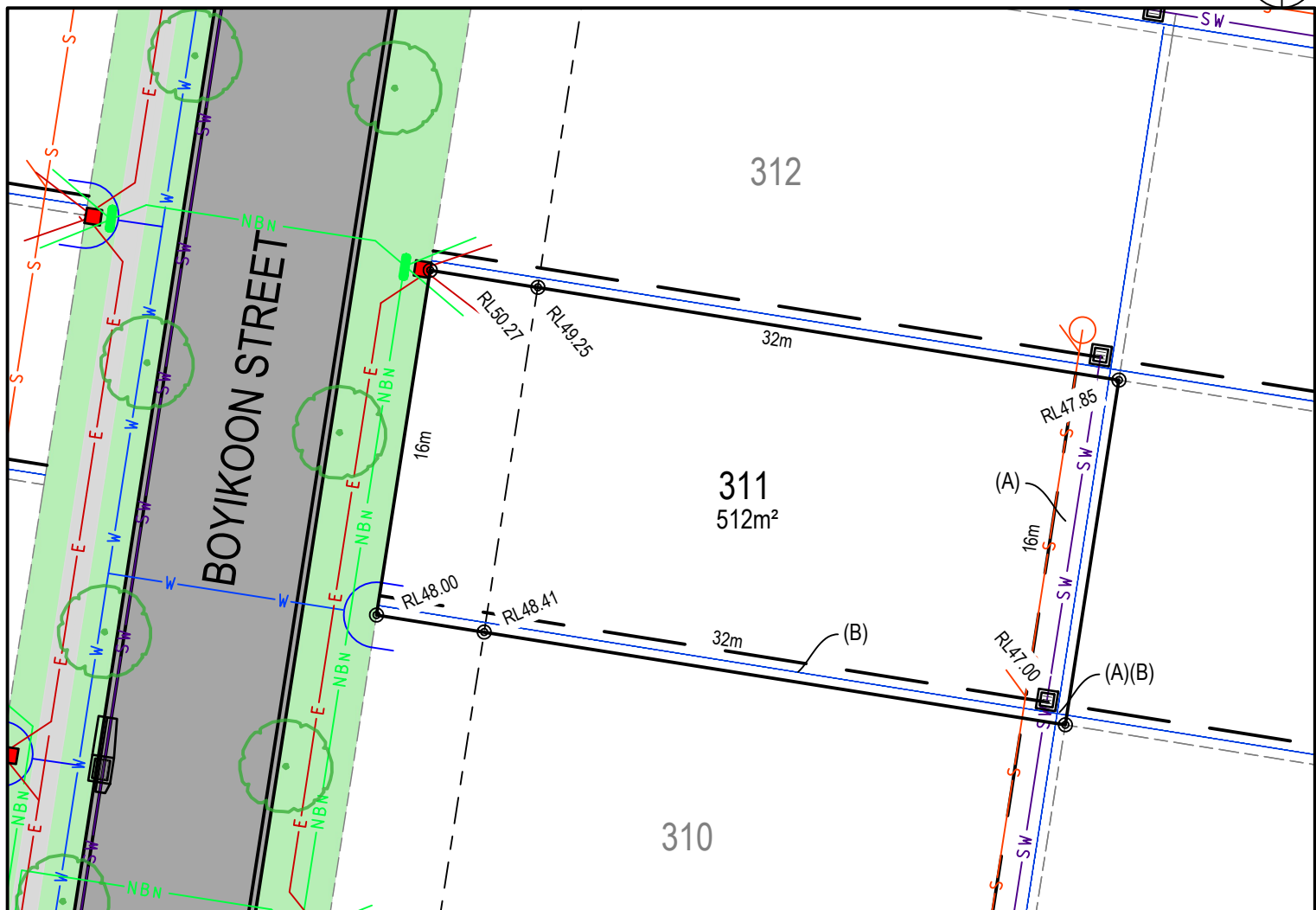
MASTER PLAN



STAGE PLAN



PRELIMINARY SITE ANALYSIS PLAN



LEGEND:

- BATTER INTERFACE
- RETAINING WALL
- STORMWATER PIT
- SW — STORMWATER PIPE
- S — SEWERMAIN
- S — SEWER MAINTENANCE STRUCTURE
- S — SEWER JUNCTION
- W — WATERMAIN
- O X — HYDRANT, STOP VALVE
- NBN — TELSTRA / NBN
- NBN — TELSTRA / NBN PIT
- E — UNDER GROUND POWER
- E — ELECTRICITY PILLAR
- E — ELECTRICAL EASEMENT
- E — LIGHT POLE
- E — RESTRICTION ON THE USE OF LAND
- E — STREET TREES
- E — ASSET PROTECTION ZONE BDY

DISCLAIMER/ NOTES:

1. Contours are based on finished design levels and are subject to construction and Council certification and therefore should not be considered as final or as-built.
2. Location of utility services including but not limited to power, water, sewer, communications and gas are subject to construction and supply authority certification and therefore should not be considered as final or as-built.
3. Survey information such as boundary dimensions and areas, easements etc are subject to final survey. Purchasers should refer to the deposited plan and 88B instrument contained in the contract for sale of land for further detailed information.
4. Bushfire and geotechnical classification are provided for convenience. Purchasers should refer to referenced detail specialist reports.
5. This preliminary site analysis plan has been collated from various sources of design information and is provided for convenience to assist purchasers in obtaining quotations/ tenders for dwelling construction.
6. This document does not form part of the contract of sale of the land.
7. Anticipated site classification is H2 or better (to be confirmed at completion of construction).

- (A) - EASEMENT TO DRAIN WATER 2 WIDE
 (B) - RESTRICTION ON THE USE OF LAND 0.9 WIDE
 (E) - EASEMENT FOR CONSTRUCTION AND MAINTENANCE 0.9 WIDE

REVISION/S: HD27 STAGE 3 MARKETING r1
 DATE: 5th OCTOBER 2021
 BY: ACOR CONSULTANTS PTY LTD

LOT 312, BOYIKOON STREET, EDGEWORTH

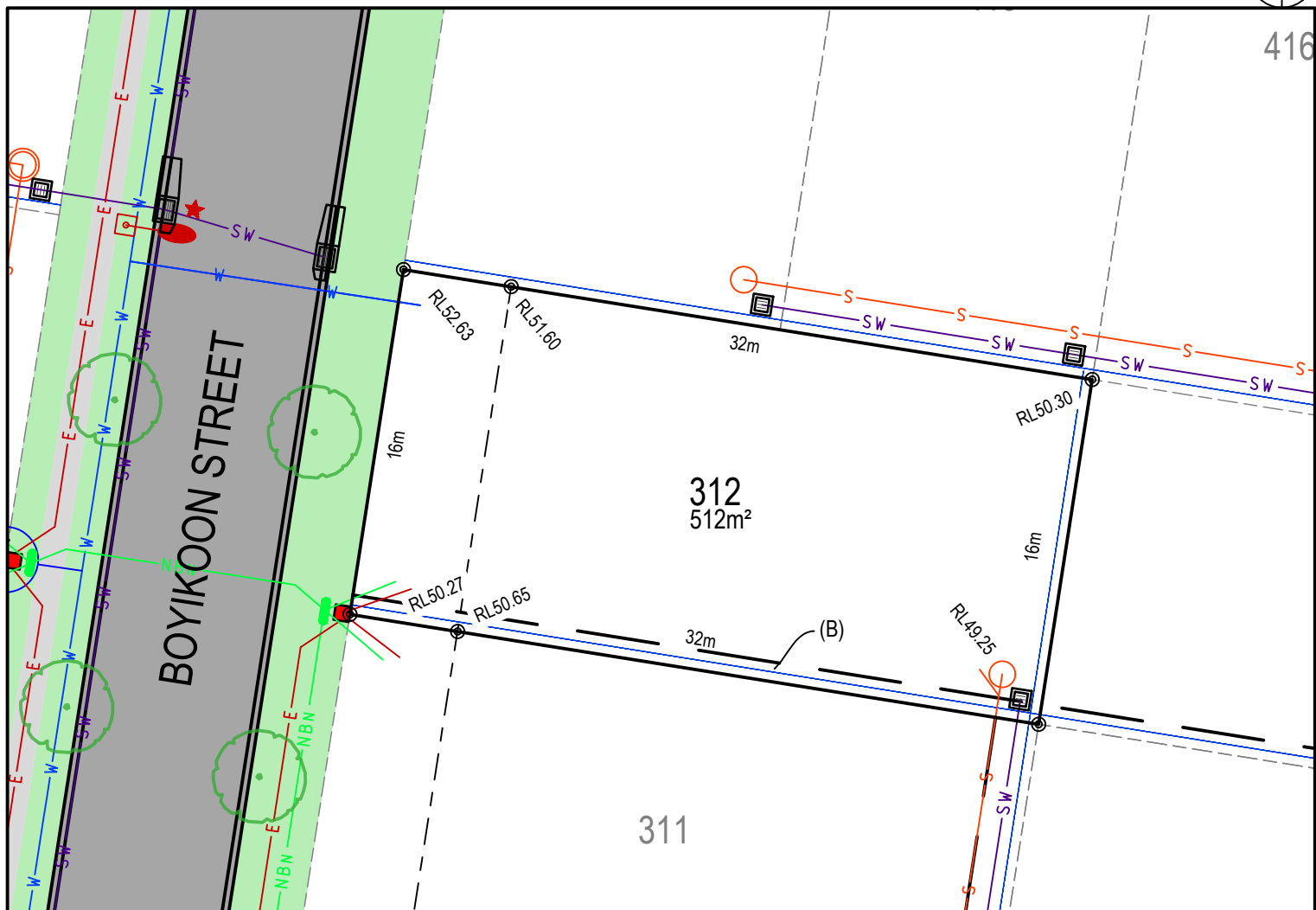
MASTER PLAN



STAGE PLAN



PRELIMINARY SITE ANALYSIS PLAN



LEGEND:

- BATTER INTERFACE
- RETAINING WALL
- STORMWATER PIT
- SW — STORMWATER PIPE
- S — SEWERMAIN
- S — SEWER MAINTENANCE STRUCTURE
- S — SEWER JUNCTION
- W — WATERMAIN
- O X — HYDRANT, STOP VALVE
- NBN — TELSTRA / NBN
- NBN — TELSTRA / NBN PIT
- E — UNDER GROUND POWER
- E — ELECTRICITY PILLAR
- E — ELECTRICAL EASEMENT
- E — LIGHT POLE
- (B) — RESTRICTION ON THE USE OF LAND
- (A) — STREET TREES
- — ASSET PROTECTION ZONE BDY

DISCLAIMER/ NOTES:

1. Contours are based on finished design levels and are subject to construction and Council certification and therefore should not be considered as final or as-built.
2. Location of utility services including but not limited to power, water, sewer, communications and gas are subject to construction and supply authority certification and therefore should not be considered as final or as-built.
3. Survey information such as boundary dimensions and areas, easements etc are subject to final survey. Purchasers should refer to the deposited plan and 88B instrument contained in the contract for sale of land for further detailed information.
4. Bushfire and geotechnical classification are provided for convenience. Purchasers should refer to referenced detail specialist reports.
5. This preliminary site analysis plan has been collated from various sources of design information and is provided for convenience to assist purchasers in obtaining quotations/ tenders for dwelling construction.
6. This document does not form part of the contract of sale of the land.
7. Anticipated site classification is H2 or better (to be confirmed at completion of construction).

- (A) - EASEMENT TO DRAIN WATER 2 WIDE
- (B) - RESTRICTION ON THE USE OF LAND 0.9 WIDE
- (E) - EASEMENT FOR CONSTRUCTION AND MAINTENANCE 0.9 WIDE

REVISION/S: HD27 STAGE 3 MARKETING r1
 DATE: 5th OCTOBER 2021
 BY: ACOR CONSULTANTS PTY LTD

LOT 313, KOYIKALING STREET, EDGEWORTH

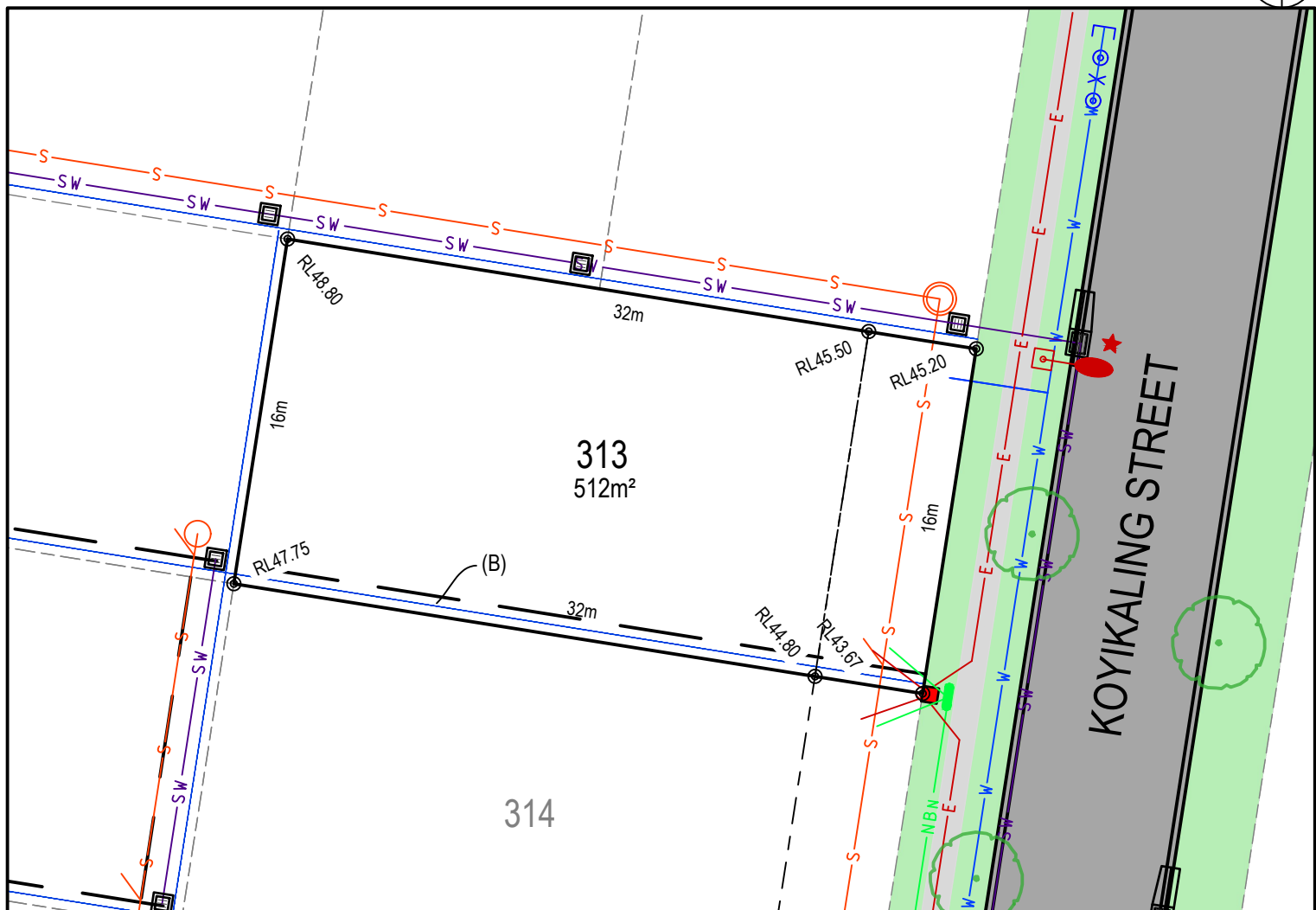
MASTER PLAN



STAGE PLAN



PRELIMINARY SITE ANALYSIS PLAN



LEGEND:

- BATTER INTERFACE
- RETAINING WALL
- STORMWATER PIT
- SW — STORMWATER PIPE
- S — SEWERMAIN
- S — SEWER MAINTENANCE STRUCTURE
- S — SEWER JUNCTION
- W — WATERMAIN
- O X — HYDRANT, STOP VALVE
- NBN — TELSTRA / NBN
- TELSTRA / NBN PIT
- E — UNDER GROUND POWER
- E — ELECTRICITY PILLAR
- E — ELECTRICAL EASEMENT
- E — LIGHT POLE
- E — RESTRICTION ON THE USE OF LAND
- E — STREET TREES
- E — ASSET PROTECTION ZONE BDY

DISCLAIMER/ NOTES:

1. Contours are based on finished design levels and are subject to construction and Council certification and therefore should not be considered as final or as-built.
2. Location of utility services including but not limited to power, water, sewer, communications and gas are subject to construction and supply authority certification and therefore should not be considered as final or as-built.
3. Survey information such as boundary dimensions and areas, easements etc are subject to final survey. Purchasers should refer to the deposited plan and 88B instrument contained in the contract for sale of land for further detailed information.
4. Bushfire and geotechnical classification are provided for convenience. Purchasers should refer to referenced detail specialist reports.
5. This preliminary site analysis plan has been collated from various sources of design information and is provided for convenience to assist purchasers in obtaining quotations/ tenders for dwelling construction.
6. This document does not form part of the contract of sale of the land.
7. Anticipated site classification is H2 or better (to be confirmed at completion of construction).

- (A) - EASEMENT TO DRAIN WATER 2 WIDE
(B) - RESTRICTION ON THE USE OF LAND 0.9 WIDE
(E) - EASEMENT FOR CONSTRUCTION AND MAINTENANCE 0.9 WIDE

REVISION/S: HD27 STAGE 3 MARKETING r1
DATE: 5th OCTOBER 2021
BY: ACOR CONSULTANTS PTY LTD

LOT 315, KOYIKALING STREET, EDGEWORTH

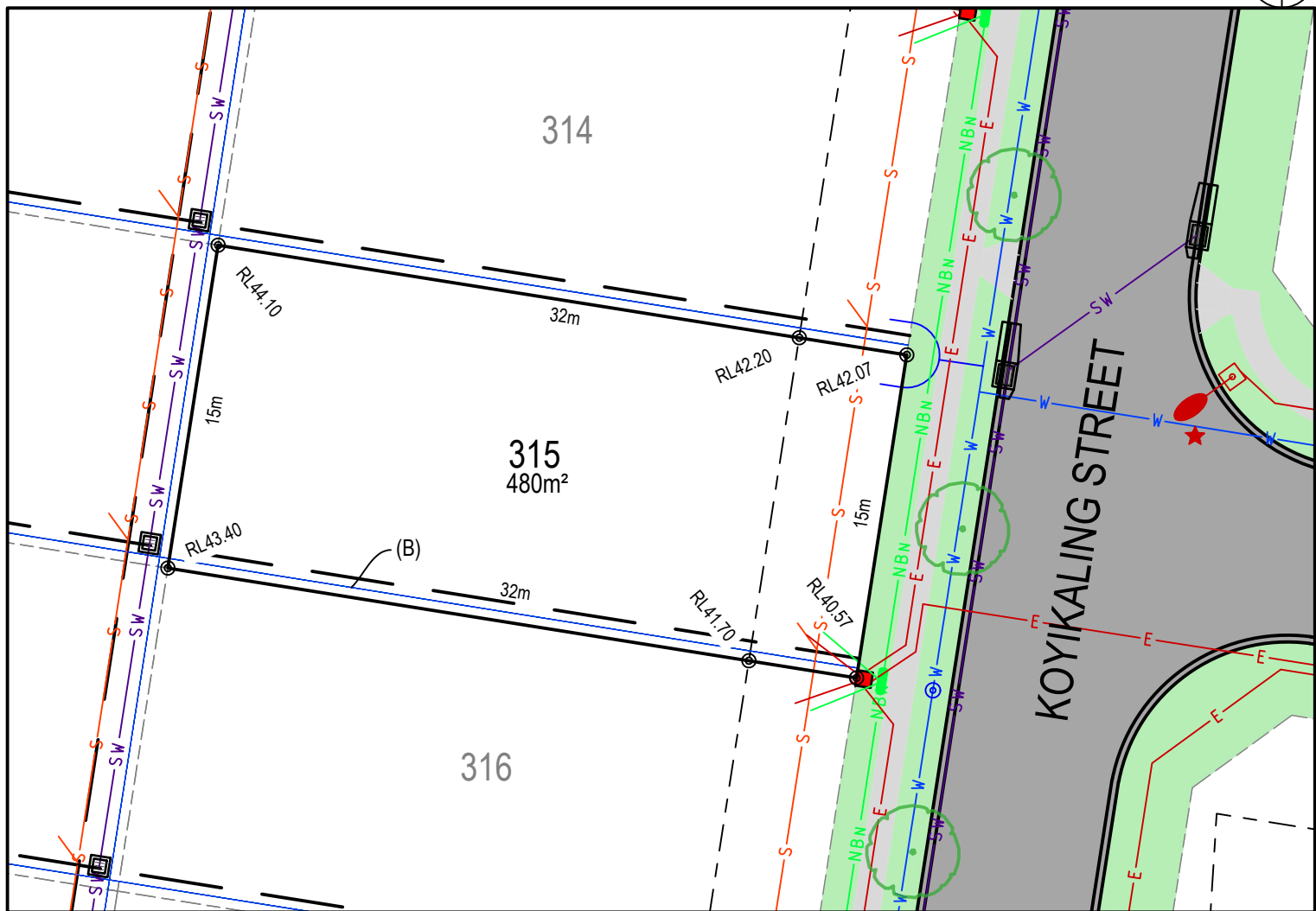
MASTER PLAN



STAGE PLAN



PRELIMINARY SITE ANALYSIS PLAN



LEGEND:

	BATTER INTERFACE
	RETAINING WALL
	STORMWATER PIT
	STORMWATER PIPE
	SEWERMAIN
	SEWER MAINTENANCE STRUCTURE
	SEWER JUNCTION
	WATERMAIN
	HYDRANT, STOP VALVE
	TELSTRA / NBN
	TELSTRA / NBN PIT
	UNDER GROUND POWER
	ELECTRICITY PILLAR
	ELECTRICAL EASEMENT
	LIGHT POLE
	RESTRICTION ON THE USE OF LAND
	STREET TREES
	ASSET PROTECTION ZONE BDY

DISCLAIMER/ NOTES:

1. Contours are based on finished design levels and are subject to construction and Council certification and therefore should not be considered as final or as-built.
2. Location of utility services including but not limited to power, water, sewer, communications and gas are subject to construction and supply authority certification and therefore should not be considered as final or as-built.
3. Survey information such as boundary dimensions and areas, easements etc are subject to final survey. Purchasers should refer to the deposited plan and 88B instrument contained in the contract for sale of land for further detailed information.
4. Bushfire and geotechnical classification are provided for convenience. Purchasers should refer to referenced detail specialist reports.
5. This preliminary site analysis plan has been collated from various sources of design information and is provided for convenience to assist purchasers in obtaining quotations/ tenders for dwelling construction.
6. This document does not form part of the contract of sale of the land.
7. Anticipated site classification is H2 or better (to be confirmed at completion of construction).

(A) - EASEMENT TO DRAIN WATER 2 WIDE
 (B) - RESTRICTION ON THE USE OF LAND 0.9 WIDE
 (E) - EASEMENT FOR CONSTRUCTION AND MAINTENANCE 0.9 WIDE

REVISION/S: HD27 STAGE 3 MARKETING r1
 DATE: 5th OCTOBER 2021
 BY: ACOR CONSULTANTS PTY LTD

LOT 316, KOYIKALING STREET, EDGEWORTH

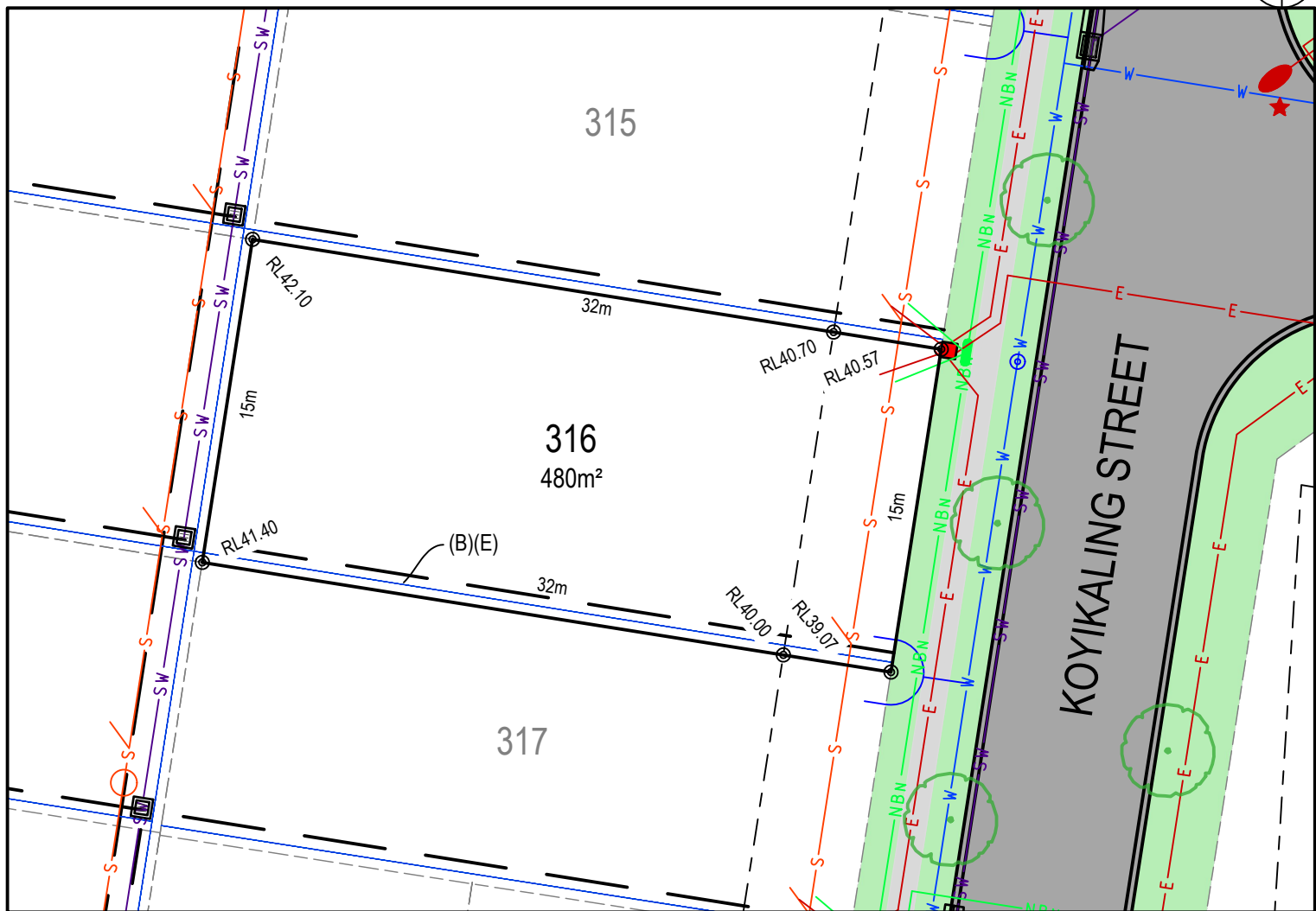
MASTER PLAN



STAGE PLAN



PRELIMINARY SITE ANALYSIS PLAN



LEGEND:

- BATTER INTERFACE
- RETAINING WALL
- STORMWATER PIT
- STORMWATER PIPE
- SEWERMAIN
- SEWER MAINTENANCE STRUCTURE
- SEWER JUNCTION
- WATERMAIN
- HYDRANT, STOP VALVE
- TELSTRA / NBN
- TELSTRA / NBN PIT
- UNDER GROUND POWER
- ELECTRICITY PILLAR
- ELECTRICAL EASEMENT
- LIGHT POLE
- RESTRICTION ON THE USE OF LAND
- STREET TREES
- ASSET PROTECTION ZONE BDY

DISCLAIMER/ NOTES:

1. Contours are based on finished design levels and are subject to construction and Council certification and therefore should not be considered as final or as-built.
2. Location of utility services including but not limited to power, water, sewer, communications and gas are subject to construction and supply authority certification and therefore should not be considered as final or as-built.
3. Survey information such as boundary dimensions and areas, easements etc are subject to final survey. Purchasers should refer to the deposited plan and 88B instrument contained in the contract for sale of land for further detailed information.
4. Bushfire and geotechnical classification are provided for convenience. Purchasers should refer to referenced detail specialist reports.
5. This preliminary site analysis plan has been collated from various sources of design information and is provided for convenience to assist purchasers in obtaining quotations/ tenders for dwelling construction.
6. This document does not form part of the contract of sale of the land.
7. Anticipated site classification is H2 or better (to be confirmed at completion of construction).

(A) - EASEMENT TO DRAIN WATER 2 WIDE
 (B) - RESTRICTION ON THE USE OF LAND 0.9 WIDE
 (E) - EASEMENT FOR CONSTRUCTION AND MAINTENANCE 0.9 WIDE

REVISION/S: HD27 STAGE 3 MARKETING r1
 DATE: 5th OCTOBER 2021
 BY: ACOR CONSULTANTS PTY LTD

LOT 317, KOYIKALING STREET, EDGEWORTH

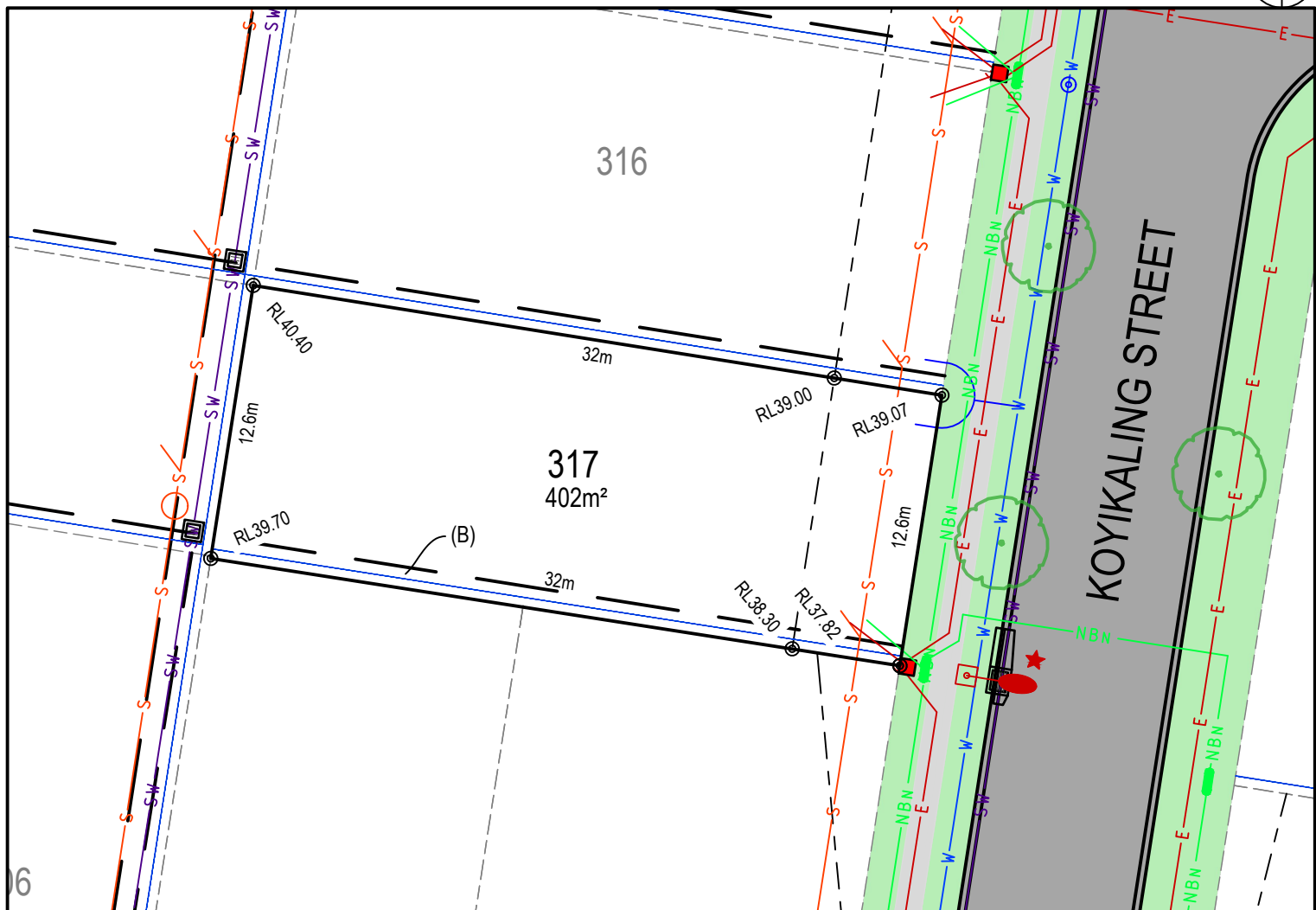
MASTER PLAN



STAGE PLAN



PRELIMINARY SITE ANALYSIS PLAN



LEGEND:

- BATTER INTERFACE
- RETAINING WALL
- STORMWATER PIT
- SW — STORMWATER PIPE
- S — SEWERMAIN
- S — SEWER MAINTENANCE STRUCTURE
- S — SEWER JUNCTION
- W — WATERMAIN
- O X — HYDRANT, STOP VALVE
- NBN — TELSTRA / NBN
- NBN — TELSTRA / NBN PIT
- E — UNDER GROUND POWER
- E — ELECTRICITY PILLAR
- E — ELECTRICAL EASEMENT
- E — LIGHT POLE
- (B) — RESTRICTION ON THE USE OF LAND
- STREET TREES
- ASSET PROTECTION ZONE BDY

DISCLAIMER/ NOTES:

1. Contours are based on finished design levels and are subject to construction and Council certification and therefore should not be considered as final or as-built.
2. Location of utility services including but not limited to power, water, sewer, communications and gas are subject to construction and supply authority certification and therefore should not be considered as final or as-built.
3. Survey information such as boundary dimensions and areas, easements etc are subject to final survey. Purchasers should refer to the deposited plan and 88B instrument contained in the contract for sale of land for further detailed information.
4. Bushfire and geotechnical classification are provided for convenience. Purchasers should refer to referenced detail specialist reports.
5. This preliminary site analysis plan has been collated from various sources of design information and is provided for convenience to assist purchasers in obtaining quotations/ tenders for dwelling construction.
6. This document does not form part of the contract of sale of the land.
7. Anticipated site classification is H2 or better (to be confirmed at completion of construction).

(A) - EASEMENT TO DRAIN WATER 2 WIDE
 (B) - RESTRICTION ON THE USE OF LAND 0.9 WIDE
 (E) - EASEMENT FOR CONSTRUCTION AND MAINTENANCE 0.9 WIDE

REVISION/S: HD27 STAGE 3 MARKETING r1
 DATE: 5th OCTOBER 2021
 BY: ACOR CONSULTANTS PTY LTD

LOT 318, BOYIKOON STREET, EDGEWORTH

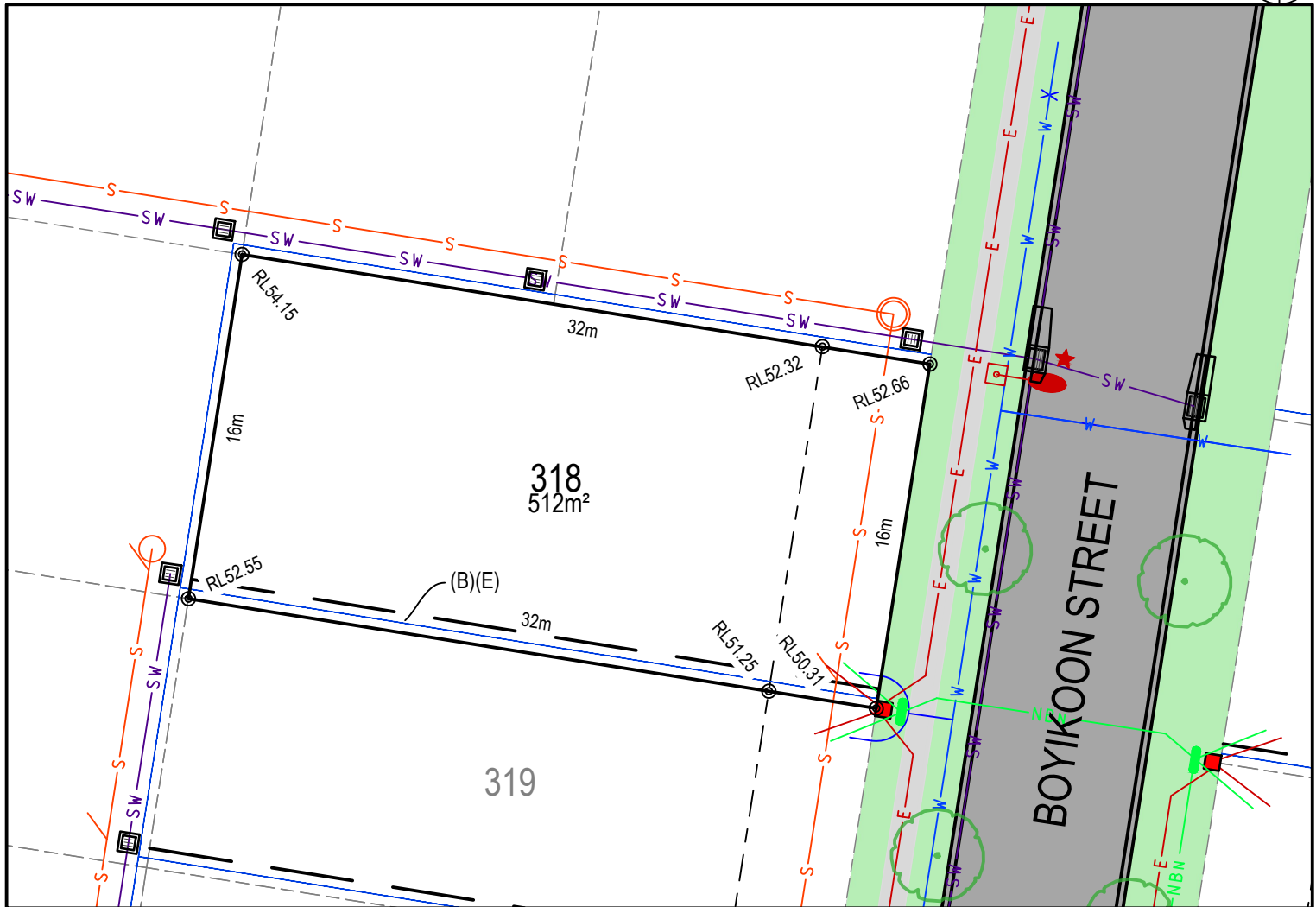
MASTER PLAN



STAGE PLAN



PRELIMINARY SITE ANALYSIS PLAN



LEGEND:

- BATTER INTERFACE
- RETAINING WALL
- STORMWATER PIT
- SW STORMWATER PIPE
- S SEWERMAIN
- O SEWER MAINTENANCE STRUCTURE
- S SEWER JUNCTION
- W WATERMAIN
- O X HYDRANT, STOP VALVE
- NBW TELSTRA / NBN
- TELSTRA / NBN PIT
- E UNDER GROUND POWER
- ELECTRICITY PILLAR
- ELECTRICAL EASEMENT
- LIGHT POLE
- RESTRICTION ON THE USE OF LAND
- STREET TREES
- ASSET PROTECTION ZONE BDY

DISCLAIMER/ NOTES:

1. Contours are based on finished design levels and are subject to construction and Council certification and therefore should not be considered as final or as-built.
2. Location of utility services including but not limited to power, water, sewer, communications and gas are subject to construction and supply authority certification and therefore should not be considered as final or as-built.
3. Survey information such as boundary dimensions and areas, easements etc are subject to final survey. Purchasers should refer to the deposited plan and 88B instrument contained in the contract for sale of land for further detailed information.
4. Bushfire and geotechnical classification are provided for convenience. Purchasers should refer to referenced detail specialist reports.
5. This preliminary site analysis plan has been collated from various sources of design information and is provided for convenience to assist purchasers in obtaining quotations/ tenders for dwelling construction.
6. This document does not form part of the contract of sale of the land.
7. Anticipated site classification is H2 or better (to be confirmed at completion of construction).

- (A) - EASEMENT TO DRAIN WATER 2 WIDE
- (B) - RESTRICTION ON THE USE OF LAND 0.9 WIDE
- (E) - EASEMENT FOR CONSTRUCTION AND MAINTENANCE 0.9 WIDE

REVISION/S: HD27 STAGE 3 MARKETING r1

DATE: 5th OCTOBER 2021

BY: ACOR CONSULTANTS PTY LTD

brushcreek.com.au



A QUALITY
MCCLOY
GROUP
PROJECT

LOT 319, BOYIKOON STREET, EDGEWORTH

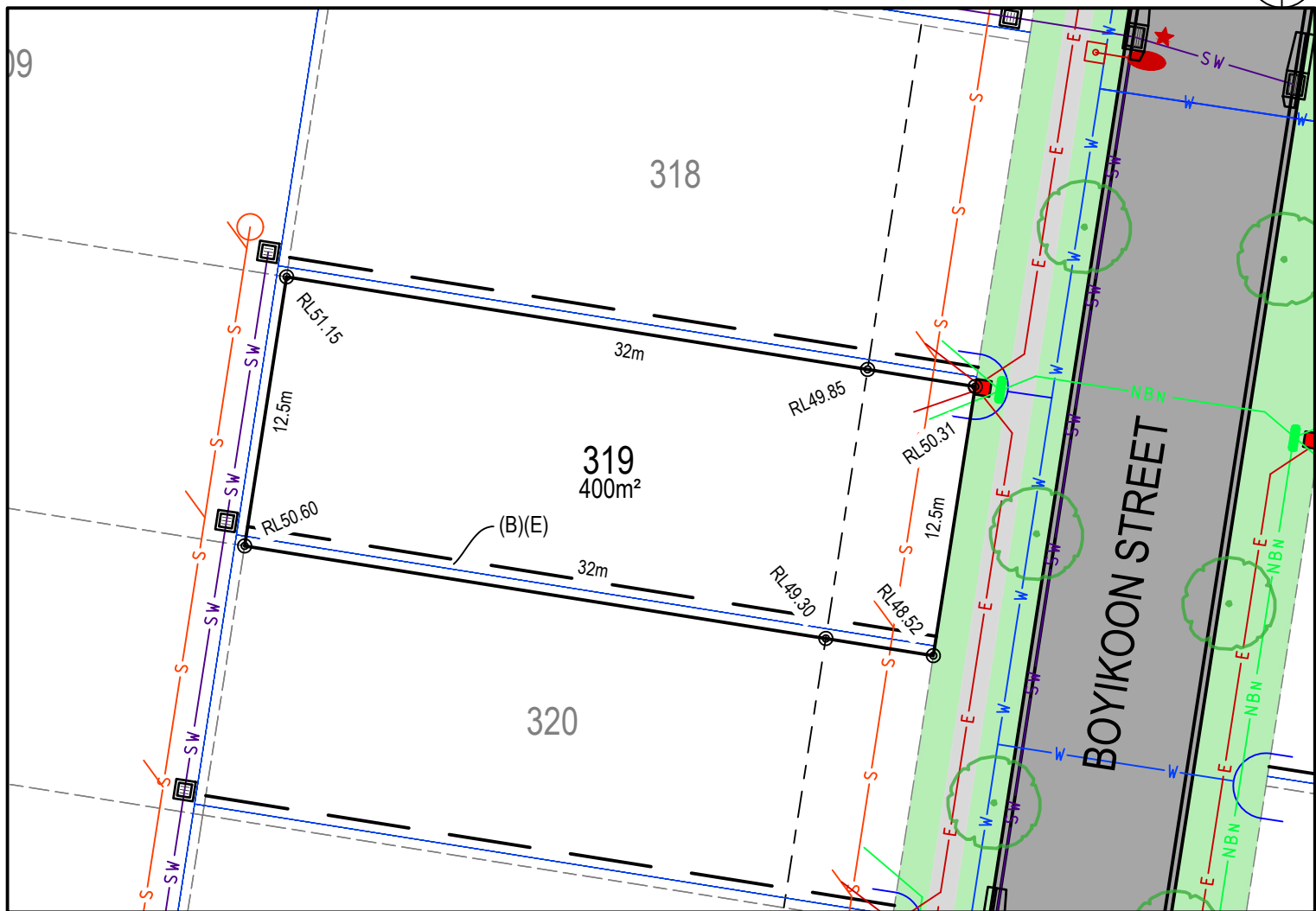
MASTER PLAN



STAGE PLAN



PRELIMINARY SITE ANALYSIS PLAN



LEGEND:

	BATTER INTERFACE
	RETAINING WALL
	STORMWATER PIT
	STORMWATER PIPE
	SEWERMAIN
	SEWER MAINTENANCE STRUCTURE
	SEWER JUNCTION
	WATERMAIN
	HYDRANT, STOP VALVE
	TELSTRA / NBN
	TELSTRA / NBN PIT
	UNDER GROUND POWER
	ELECTRICITY PILLAR
	ELECTRICAL EASEMENT
	LIGHT POLE
	RESTRICTION ON THE USE OF LAND
	STREET TREES
	ASSET PROTECTION ZONE BDY

DISCLAIMER/ NOTES:

1. Contours are based on finished design levels and are subject to construction and Council certification and therefore should not be considered as final or as-built.
2. Location of utility services including but not limited to power, water, sewer, communications and gas are subject to construction and supply authority certification and therefore should not be considered as final or as-built.
3. Survey information such as boundary dimensions and areas, easements etc are subject to final survey. Purchasers should refer to the deposited plan and 88B instrument contained in the contract for sale of land for further detailed information.
4. Bushfire and geotechnical classification are provided for convenience. Purchasers should refer to referenced detail specialist reports.
5. This preliminary site analysis plan has been collated from various sources of design information and is provided for convenience to assist purchasers in obtaining quotations/ tenders for dwelling construction.
6. This document does not form part of the contract of sale of the land.
7. Anticipated site classification is H2 or better (to be confirmed at completion of construction).

(A) - EASEMENT TO DRAIN WATER 2 WIDE
 (B) - RESTRICTION ON THE USE OF LAND 0.9 WIDE
 (E) - EASEMENT FOR CONSTRUCTION AND MAINTENANCE 0.9 WIDE

REVISION/S: HD27 STAGE 3 MARKETING r1
 DATE: 5th OCTOBER 2021
 BY: ACOR CONSULTANTS PTY LTD

LOT 320, BOYIKOON STREET, EDGEWORTH

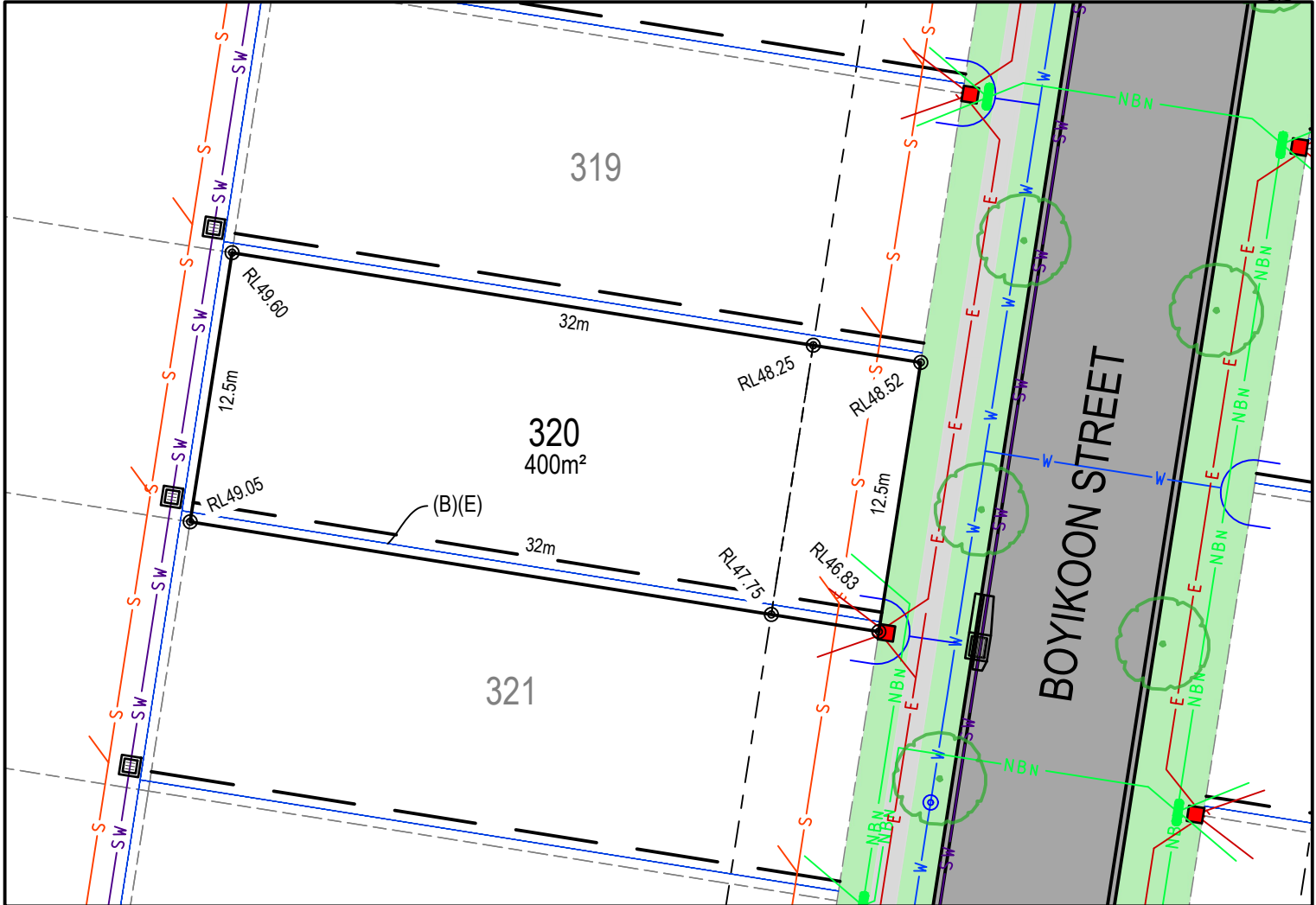
MASTER PLAN



STAGE PLAN



PRELIMINARY SITE ANALYSIS PLAN



LEGEND:

- BATTER INTERFACE
- RETAINING WALL
- STORMWATER PIT
- STORMWATER PIPE
- SEWERMAIN
- SEWER MAINTENANCE STRUCTURE
- SEWER JUNCTION
- WATERMAIN
- HYDRANT, STOP VALVE
- TELSTRA / NBN
- TELSTRA / NBN PIT
- UNDER GROUND POWER
- ELECTRICITY PILLAR
- ELECTRICAL EASEMENT
- LIGHT POLE
- RESTRICTION ON THE USE OF LAND
- STREET TREES
- ASSET PROTECTION ZONE BDY

DISCLAIMER/ NOTES:

1. Contours are based on finished design levels and are subject to construction and Council certification and therefore should not be considered as final or as-built.
2. Location of utility services including but not limited to power, water, sewer, communications and gas are subject to construction and supply authority certification and therefore should not be considered as final or as-built.
3. Survey information such as boundary dimensions and areas, easements etc are subject to final survey. Purchasers should refer to the deposited plan and 88B instrument contained in the contract for sale of land for further detailed information.
4. Bushfire and geotechnical classification are provided for convenience. Purchasers should refer to referenced detail specialist reports.
5. This preliminary site analysis plan has been collated from various sources of design information and is provided for convenience to assist purchasers in obtaining quotations/ tenders for dwelling construction.
6. This document does not form part of the contract of sale of the land.
7. Anticipated site classification is H2 or better (to be confirmed at completion of construction).

- (A) - EASEMENT TO DRAIN WATER 2 WIDE
 (B) - RESTRICTION ON THE USE OF LAND 0.9 WIDE
 (E) - EASEMENT FOR CONSTRUCTION AND MAINTENANCE 0.9 WIDE

REVISION/S: HD27 STAGE 3 MARKETING r1
 DATE: 5th OCTOBER 2021
 BY: ACOR CONSULTANTS PTY LTD

brushcreek.com.au



A QUALITY
MCCLOY
GROUP
PROJECT

LOT 321, BOYIKOON STREET, EDGEWORTH

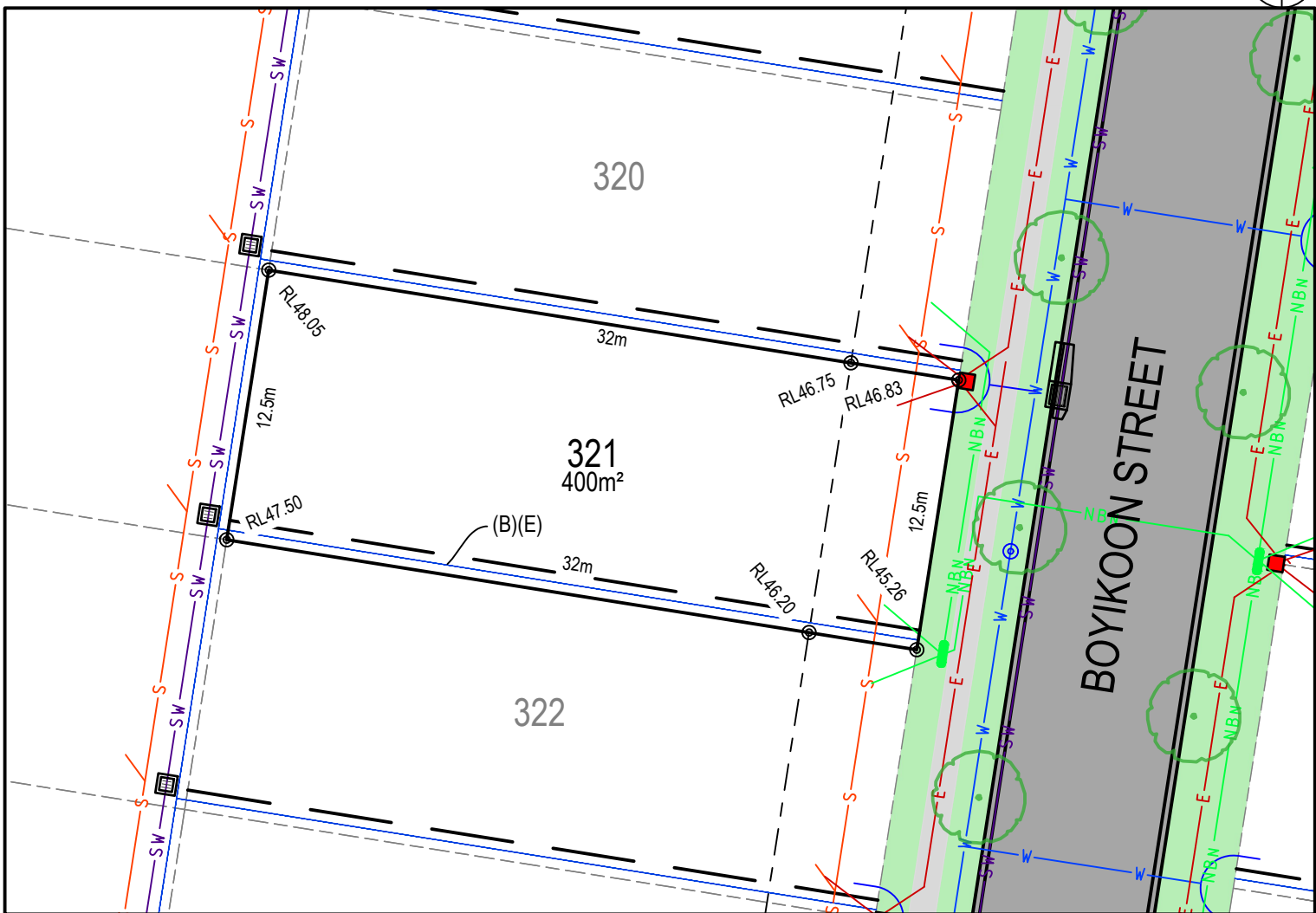
MASTER PLAN



STAGE PLAN



PRELIMINARY SITE ANALYSIS PLAN



LEGEND:

- BATTER INTERFACE
- RETAINING WALL
- STORMWATER PIT
- SW — STORMWATER PIPE
- S — SEWERMAIN
- S — SEWER MAINTENANCE STRUCTURE
- S — SEWER JUNCTION
- W — WATERMAIN
- O X — HYDRANT, STOP VALVE
- NBN — TELSTRA / NBN
- NBN — TELSTRA / NBN PIT
- E — UNDER GROUND POWER
- E — ELECTRICITY PILLAR
- E — ELECTRICAL EASEMENT
- E — LIGHT POLE
- R — RESTRICTION ON THE USE OF LAND
- S — STREET TREES
- S — ASSET PROTECTION ZONE BDY

DISCLAIMER/ NOTES:

1. Contours are based on finished design levels and are subject to construction and Council certification and therefore should not be considered as final or as-built.
2. Location of utility services including but not limited to power, water, sewer, communications and gas are subject to construction and supply authority certification and therefore should not be considered as final or as-built.
3. Survey information such as boundary dimensions and areas, easements etc are subject to final survey. Purchasers should refer to the deposited plan and 88B instrument contained in the contract for sale of land for further detailed information.
4. Bushfire and geotechnical classification are provided for convenience. Purchasers should refer to referenced detail specialist reports.
5. This preliminary site analysis plan has been collated from various sources of design information and is provided for convenience to assist purchasers in obtaining quotations/ tenders for dwelling construction.
6. This document does not form part of the contract of sale of the land.
7. Anticipated site classification is H2 or better (to be confirmed at completion of construction).

- (A) - EASEMENT TO DRAIN WATER 2 WIDE
 (B) - RESTRICTION ON THE USE OF LAND 0.9 WIDE
 (E) - EASEMENT FOR CONSTRUCTION AND MAINTENANCE 0.9 WIDE

REVISION/S: HD27 STAGE 3 MARKETING r1
 DATE: 5th OCTOBER 2021
 BY: ACOR CONSULTANTS PTY LTD

LOT 322, BOYIKOON STREET, EDGEWORTH

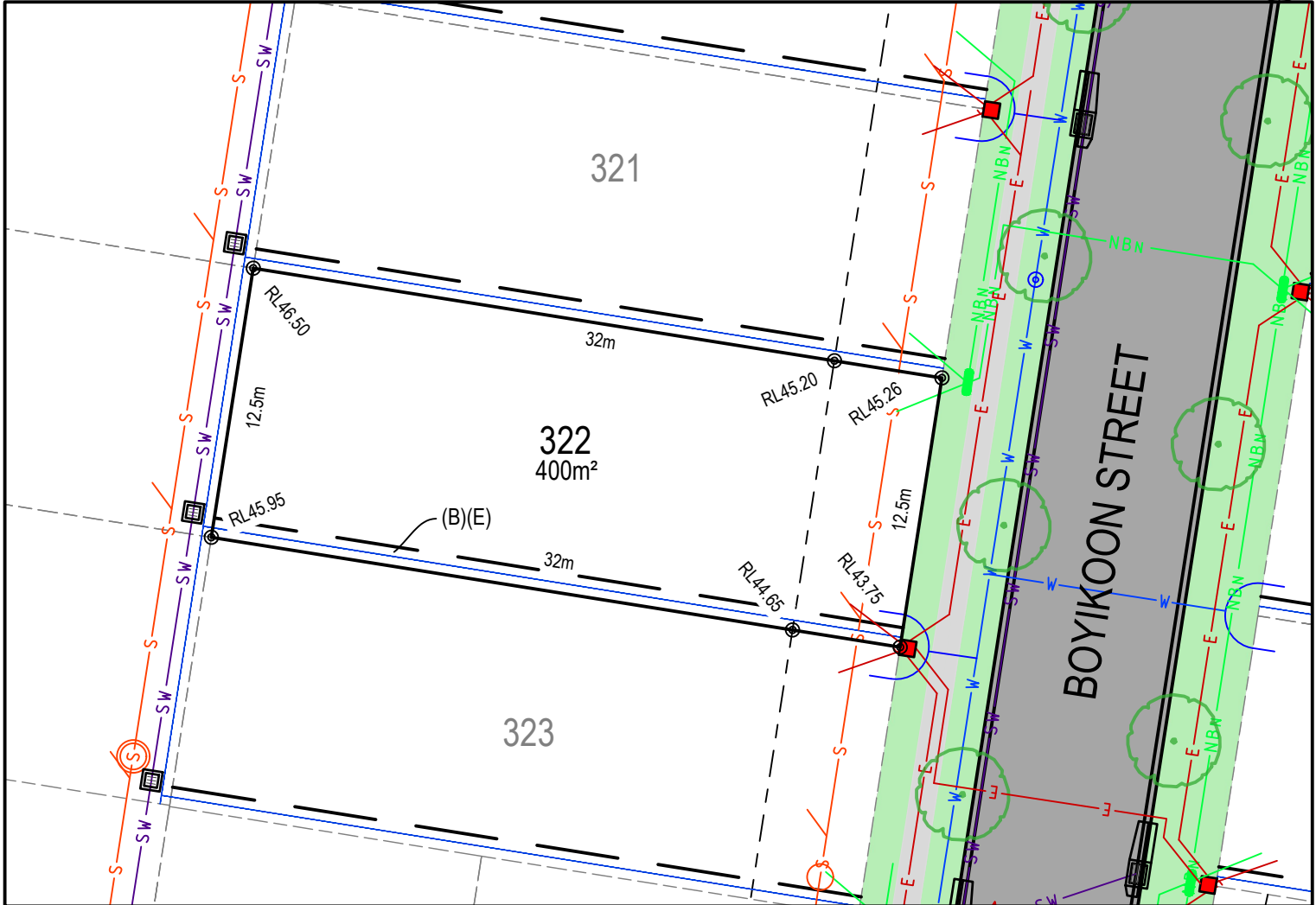
MASTER PLAN



STAGE PLAN



PRELIMINARY SITE ANALYSIS PLAN



LEGEND:

	BATTER INTERFACE
	RETAINING WALL
	STORMWATER PIT
	STORMWATER PIPE
	SEWERMAIN
	SEWER MAINTENANCE STRUCTURE
	SEWER JUNCTION
	WATERMAIN
	HYDRANT, STOP VALVE
	TELSTRA / NBN
	TELSTRA / NBN PIT
	UNDER GROUND POWER
	ELECTRICITY PILLAR
	ELECTRICAL EASEMENT
	LIGHT POLE
	RESTRICTION ON THE USE OF LAND
	STREET TREES
	ASSET PROTECTION ZONE BDY

DISCLAIMER/ NOTES:

1. Contours are based on finished design levels and are subject to construction and Council certification and therefore should not be considered as final or as-built.
2. Location of utility services including but not limited to power, water, sewer, communications and gas are subject to construction and supply authority certification and therefore should not be considered as final or as-built.
3. Survey information such as boundary dimensions and areas, easements etc are subject to final survey. Purchasers should refer to the deposited plan and 88B instrument contained in the contract for sale of land for further detailed information.
4. Bushfire and geotechnical classification are provided for convenience. Purchasers should refer to referenced detail specialist reports.
5. This preliminary site analysis plan has been collated from various sources of design information and is provided for convenience to assist purchasers in obtaining quotations/ tenders for dwelling construction.
6. This document does not form part of the contract of sale of the land.
7. Anticipated site classification is H2 or better (to be confirmed at completion of construction).

(A) - EASEMENT TO DRAIN WATER 2 WIDE
 (B) - RESTRICTION ON THE USE OF LAND 0.9 WIDE
 (E) - EASEMENT FOR CONSTRUCTION AND MAINTENANCE 0.9 WIDE

REVISION/S: HD27 STAGE 3 MARKETING r1
 DATE: 5th OCTOBER 2021
 BY: ACOR CONSULTANTS PTY LTD

brushcreek.com.au



A QUALITY
MCCLOY
GROUP
PROJECT

LOT 323, BOYIKOON STREET, EDGEWORTH

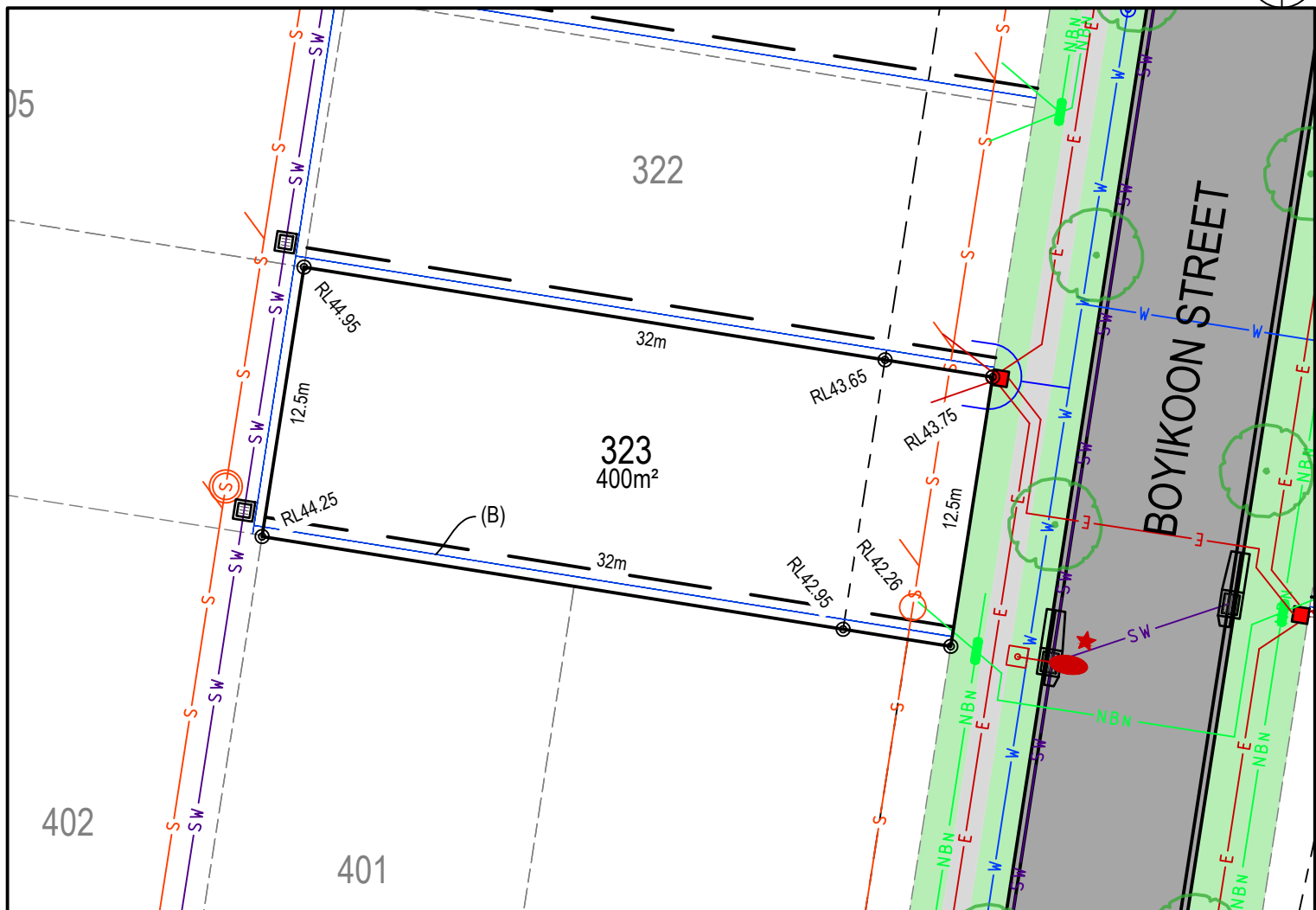
MASTER PLAN



STAGE PLAN



PRELIMINARY SITE ANALYSIS PLAN



LEGEND:

- BATTER INTERFACE
- RETAINING WALL
- STORMWATER PIT
- SW — STORMWATER PIPE
- S — SEWERMAIN
- S — SEWER MAINTENANCE STRUCTURE
- S — SEWER JUNCTION
- W — WATERMAIN
- O X — HYDRANT, STOP VALVE
- NBW — TELSTRA / NBN
- NBN — TELSTRA / NBN PIT
- E — UNDER GROUND POWER
- E — ELECTRICITY PILLAR
- E — ELECTRICAL EASEMENT
- E — LIGHT POLE
- E — RESTRICTION ON THE USE OF LAND
- E — STREET TREES
- E — ASSET PROTECTION ZONE BDY

DISCLAIMER/ NOTES:

1. Contours are based on finished design levels and are subject to construction and Council certification and therefore should not be considered as final or as-built.
2. Location of utility services including but not limited to power, water, sewer, communications and gas are subject to construction and supply authority certification and therefore should not be considered as final or as-built.
3. Survey information such as boundary dimensions and areas, easements etc are subject to final survey. Purchasers should refer to the deposited plan and 88B instrument contained in the contract for sale of land for further detailed information.
4. Bushfire and geotechnical classification are provided for convenience. Purchasers should refer to referenced detail specialist reports.
5. This preliminary site analysis plan has been collated from various sources of design information and is provided for convenience to assist purchasers in obtaining quotations/ tenders for dwelling construction.
6. This document does not form part of the contract of sale of the land.
7. Anticipated site classification is H2 or better (to be confirmed at completion of construction).

- (A) - EASEMENT TO DRAIN WATER 2 WIDE
 (B) - RESTRICTION ON THE USE OF LAND 0.9 WIDE
 (E) - EASEMENT FOR CONSTRUCTION AND MAINTENANCE 0.9 WIDE

REVISION/S: HD27 STAGE 3 MARKETING r1
 DATE: 5th OCTOBER 2021
 BY: ACOR CONSULTANTS PTY LTD

LOT 324, TARKALONG STREET, EDGEWORTH

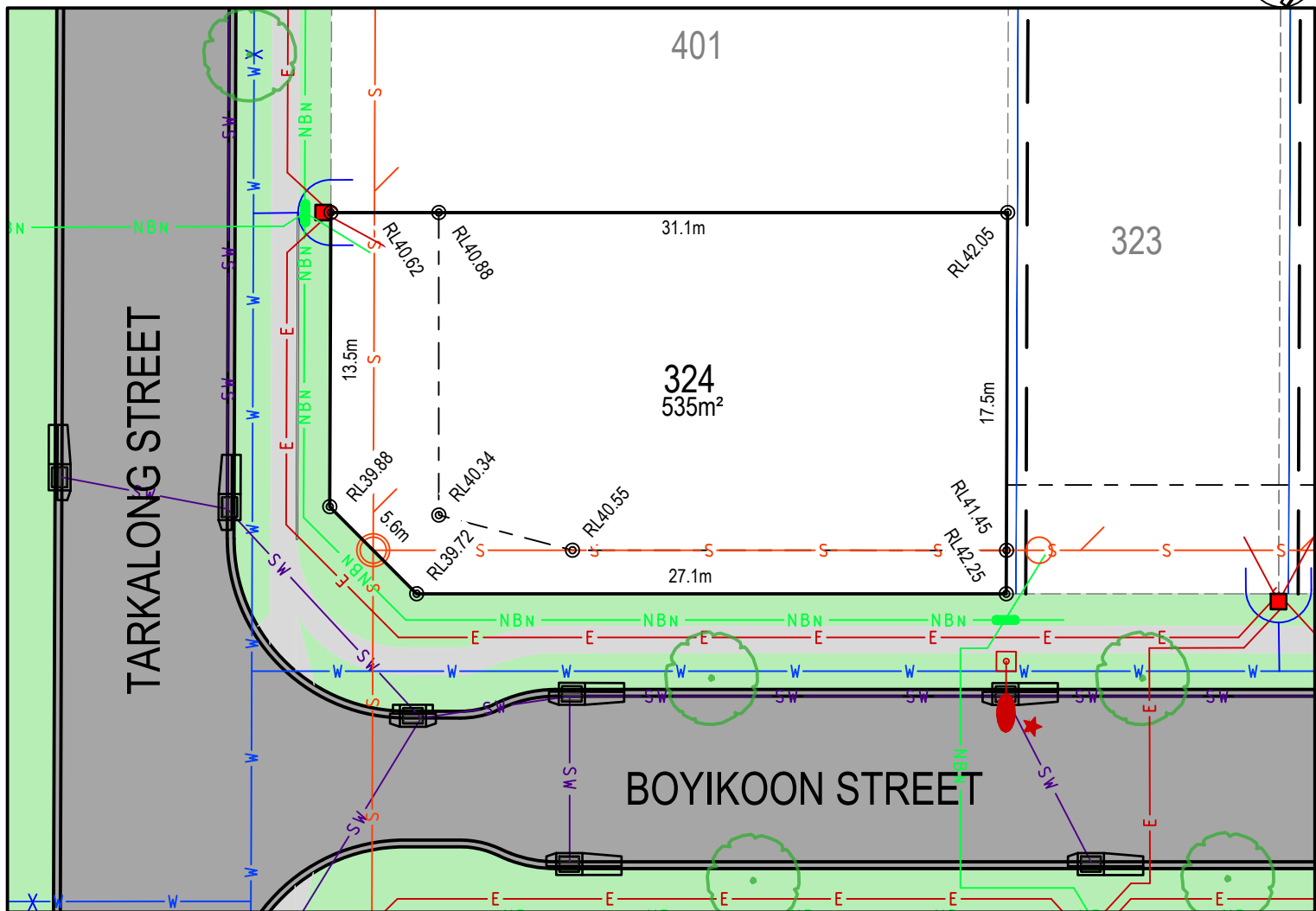
MASTER PLAN



STAGE PLAN



PRELIMINARY SITE ANALYSIS PLAN



LEGEND:

- BATTER INTERFACE
- RETAINING WALL
- STORMWATER PIT
- SW — STORMWATER PIPE
- S — SEWERMAIN
- S — SEWER MAINTENANCE STRUCTURE
- S — SEWER JUNCTION
- W — WATERMAIN
- O X — HYDRANT, STOP VALVE
- NBN — TELSTRA / NBN
- NBN — TELSTRA / NBN PIT
- E — UNDER GROUND POWER
- E — ELECTRICITY PILLAR
- E — ELECTRICAL EASEMENT
- E — LIGHT POLE
- E — RESTRICTION ON THE USE OF LAND
- E — STREET TREES
- E — ASSET PROTECTION ZONE BDY

DISCLAIMER/ NOTES:

1. Contours are based on finished design levels and are subject to construction and Council certification and therefore should not be considered as final or as-built.
2. Location of utility services including but not limited to power, water, sewer, communications and gas are subject to construction and supply authority certification and therefore should not be considered as final or as-built.
3. Survey information such as boundary dimensions and areas, easements etc are subject to final survey. Purchasers should refer to the deposited plan and 88B instrument contained in the contract for sale of land for further detailed information.
4. Bushfire and geotechnical classification are provided for convenience. Purchasers should refer to referenced detail specialist reports.
5. This preliminary site analysis plan has been collated from various sources of design information and is provided for convenience to assist purchasers in obtaining quotations/ tenders for dwelling construction.
6. This document does not form part of the contract of sale of the land.
7. Anticipated site classification is H2 or better (to be confirmed at completion of construction).

- (A) - EASEMENT TO DRAIN WATER 2 WIDE
 (B) - RESTRICTION ON THE USE OF LAND 0.9 WIDE
 (E) - EASEMENT FOR CONSTRUCTION AND MAINTENANCE 0.9 WIDE

REVISION/S: HD27 STAGE 3 MARKETING r1
 DATE: 5th OCTOBER 2021
 BY: ACOR CONSULTANTS PTY LTD

brushcreek.com.au



A QUALITY
MCCLOY
GROUP
PROJECT