

\$360,207*

Includes
three of our
Home
Upgrade Packs
Comfort, Kitchen,
& Electrical

Juliet Façade

Domainehomes Home Only



SCAN ME

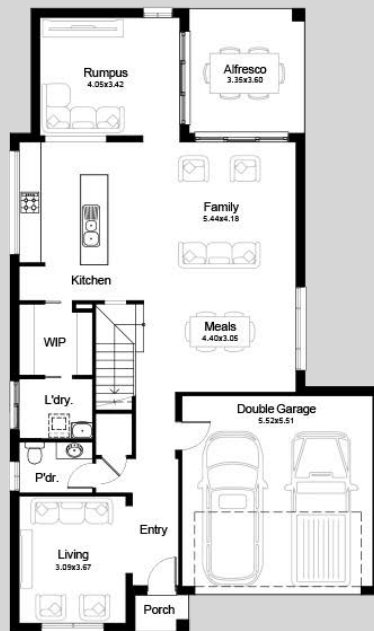
EDGEWORTH - BRUSH CREEK

PHOENIX 29

Contact Jason Hatz for more information : 0438 495 591

Package Includes:

- Hybrid steel frame
- Lifetime structural guarantee
- Allowance for additional site costs
- BASIX requirements included
- Floor coverings – quality tiles and carpet
- Window coverings and flyscreens
- 20mm stone bench top to kitchen and bathrooms
- 900mm oven, cooktop and rangehood
- Stainless steel dishwasher
- LED downlights to hallway, kitchen, family and meals
- TV antenna
- Fully ducted air conditioning
- Security system
- Colorbond roof upgrade
- Plus much more...



- *Current promotion already applied
- *No allowance for BAL rating.
- *Images are for illustrative purposes only
- *Brush Creek facade requirements included



Fast, affordable, easy

*Terms and Conditions apply. Images for illustrative purposes only. Domain Homes reserves the right to change the price without notice. E&OE. Domain Homes (NSW) Pty Ltd. ABN 19 080 788 969 BL No. 91387C.

4

2.5

2

Home Size 25sq

13 64 69 or Domainehomes.com.au