

**E L W O O D M K I I 1 7 3**



**BUILD YOUR FAMILY  
 MEMORIES**

**Lot 111 New St  
 Brush Creek Estate  
 Edgeworth**

(Land: 360 m<sup>2</sup>)



Total (sqs.)	18.67
Total (m <sup>2</sup> )	173.4
Width (m)	8.99
Length (m)	20.27

**\$503,990\***

**Features & Inclusions**

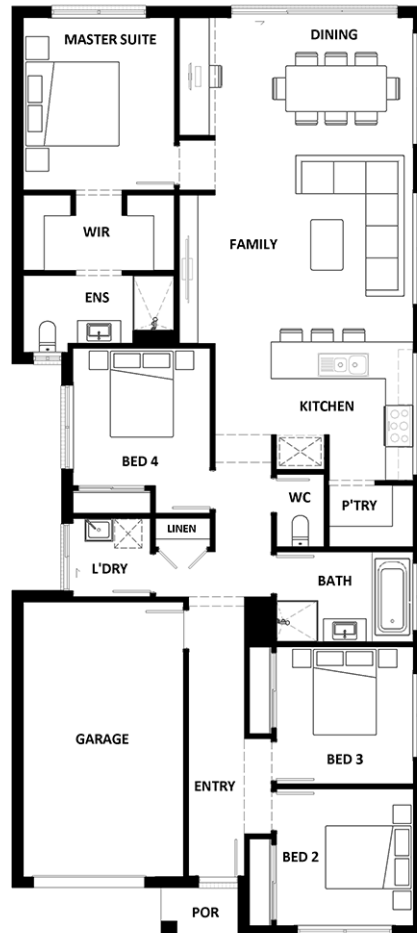
- 20mm Stone Benchtops
- Concrete driveway allowance
- Ducted Cooling
- Flyscreens
- Vinyl planks, carpet and tiles throughout

For more details, call

**Ashley Keeling**

**02 4920 7211**

**Ashley@cherryrd.com.au**



\*Dimensions, photographs, floor plans and façade images are approximate and for illustrative purposes only. They are not drawn to scale. The dimensions provided of "width" and "length" are the actual dimensions of the completed house including alfresco areas (where applicable). It is the home owner's responsibility to ensure that all applicable council regulations and estate requirements are met. Subject to land availability, pricing and site costs unless advertised as a 'fixed price package'. Driveway size based on builder's preferred siting. Check with your local builder for builder's standard range and inclusions. Photographs may include optional features or items that are not supplied by Hotondo Homes. Hotondo Homes reserves the right to change plans, specifications, materials and suppliers without notice. For more information visit your local builder or hotondo.com.au.