



HOUSE ONLY



LOT XXX
BRUSH CREEK,
EDGEWORTH,
NSW

Newport 270 | **Retro**



5 beds



2.5 baths



2 parks



28.9 squares



11.82m wide

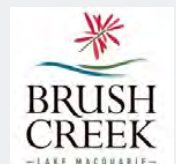
\$419,900

This house and land package includes:

- Essentials range inclusions
- BASIX requirements including water tank
- Standard site costs
- Termite resistant frames and trusses
- Sarking under roof tiles
- Large double garage with remote control door
- Flyscreens to all windows and sliding doors

Additional Bonuses:

- Iive dishwasher
- Stunning Caesarstone® kitchen benchtops
- Ceramic tiling to living areas
- Quality carpet to non-tiled areas
- Supply and installation of light fittings
- Coloured concrete driveway and footpath
- Alfresco entertainment area including slab
- Daikin ducted air conditioning





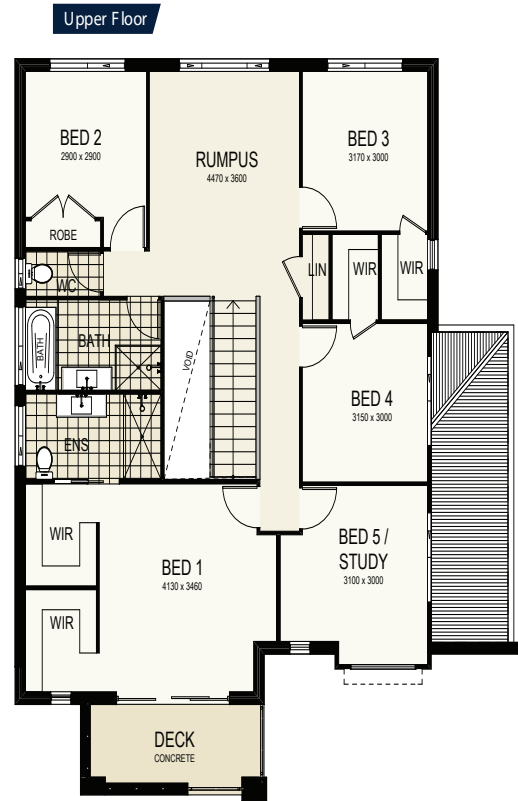
Newport 270 Retro

montgomeryhomes.com.au

LOT XXX
BRUSH CREEK,
EDGEWORTH,
NSW

5 beds 2.5 baths 2 parks 28.9 squares 11.82m wide

TOTAL FLOOR AREA
28.9 squares or 268.64m²



For more information, please contact:

Soul Wilson
Sales Executive

0412927671 | soul@montgomeryhomes.com.au

CONDITIONS APPLY Please note that this is not a final tender and Montgomery Homes reserves the right to revise plans, pricing & all specifications without obligation or notice. Pricing is subject to Council & any other statutory or regulatory authority requirements (Eg. BASIX, Mines, Bushfire etc). Designs and plans are Copyright protected and remain the property of Montgomery Homes Pty Ltd at all times. Pictures shown are for illustrative purposes only. Price excludes any external works i.e. landscaping, driveway, retaining walls & excludes floor coverings to living areas & bedrooms etc, window furnishings & light fittings.



montgomeryhomes.com.au

