

House Package only  
From \$ **289,659**

Valid until 31 December 2018



Based on basic house \*\$207,601

plus listed upgrades

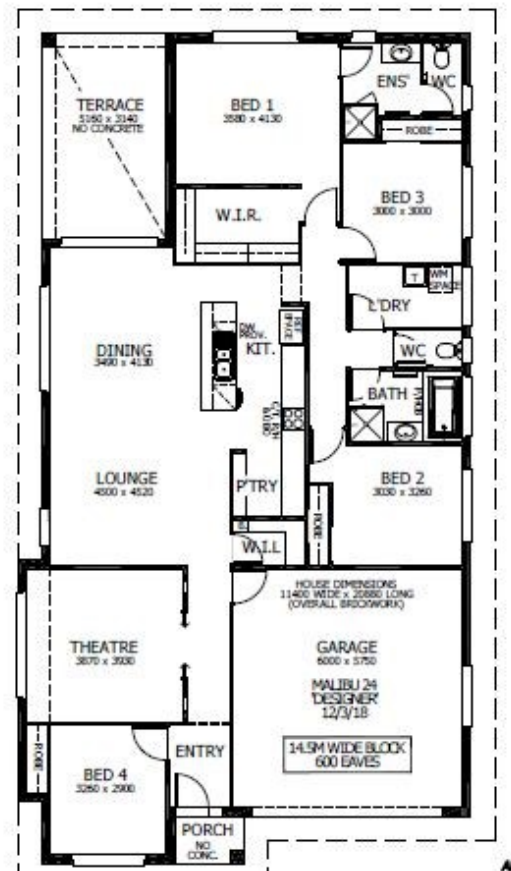


## Malibu 24

Floor Area: 222.32m<sup>2</sup> or 26.63sq  
Frontage: 11.40m Depth: 20.88m

### House Package Inclusions:

- Designer Plus Portico
- Covered Terrace
- Upgraded Designer Kitchen with stainless steel appliances
- 'Reconstituted' stone benchtops to Kitchen
- LED light Switches & Downlighting Package
- All Internal Floor Coverings
- Concrete allowance to Driveway, Terrace and Porch
- Flyscreens to all windows & sliding doors
- Perry Homes "Prestige Inclusions Package"
- Wall mounted Clothesline
- Powder coated letter box and TV Antenna
- Fully Ducted Air Conditioner
- Site Works & Basix allowance of \$30,000 \**subject to contour survey*



## Noel Simmonds

02 4021 1680

noelsimmonds@perryhomes.com.au

www.hunterregionhouseandland.com.au



Designer Plus Façade shown, upgrades available as optional extras

Disclaimer



Interior image indicative only

Due care has been taken with the siting, design and pricing of the proposed dwelling based upon current information and is correct at time of publication. This however, may change as a result of other influences such as; developer covenants, local, state or federal government requirements etc. Also, undetermined site conditions such as; tree removal, acoustics, bushfire, rock etc. may be excluded unless otherwise specified. Terms and conditions apply to campaigns and special offers. Plans and images are for illustrative purposes only and may not accurately depict the finished product. Some images may include products which are not supplied by Perry Homes and are used for display purposes only. Perry Homes (Aust) Pty Ltd. QBCC Act Lic. No.718748 NSW Lic No. 110970C