

House Package Only

From \$281,823

Based on basic house \$202,097

Valid until 31 December 2018

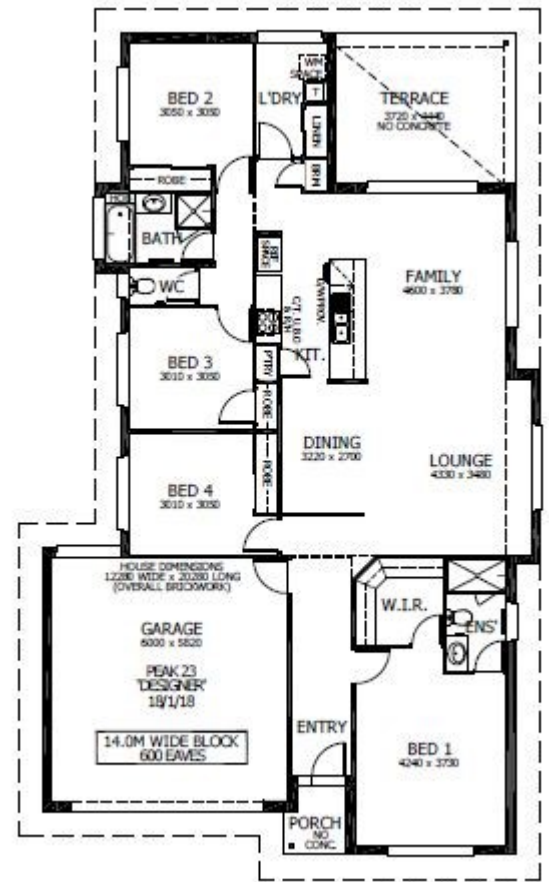


Peak 23 - Designer

Floor Area: 210.38m² or 22.62sq Block Size: 465m²
Frontage: 12.28m Depth: 20.28m

Package Inclusions:

- Designer Plus Portico
- Covered Alfresco
- Fully Ducted Air Conditioning
- All Internal Floor Coverings
- 'Reconstituted' stone benchtops in Kitchen
- Downlights and LED Electrical Package
- Upgraded Designer Kitchen with Stainless Steel Appliances
- Flyscreens to all windows and sliding doors
- Concrete Allowance to Driveway, Porch and Terrace
- Wall mounted clothesline
- TV Antenna and powder coated letter box
- Perry Homes "Prestige Inclusions Package"
- Site works & Basix allowance of \$30,000 *Subject to Contour Survey



Noel Simmonds

02 4021 1680

noel.simmonds@perryhomes.com.au

www.hunterregionhouseandland.com.au



Façade upgrades available as an optional extra

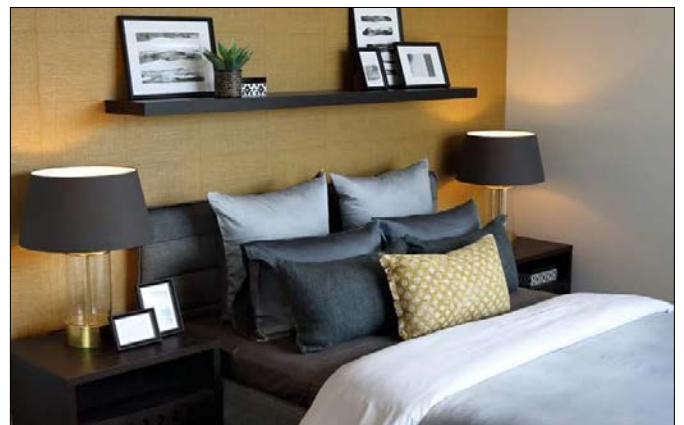


Image indicative only

Disclaimer

Due care has been taken with the siting, design and pricing of the proposed dwelling based upon current information and is correct at time of publication. This however, may change as a result of other influences such as; developer covenants, local, state or federal government requirements etc. Also, undetermined site conditions such as; tree removal, acoustics, bushfire, rock etc. may be excluded unless otherwise specified. Terms and conditions apply to campaigns and special offers. Plans and images are for illustrative purposes only and may not accurately depict the finished product. Some images may include products which are not supplied by Perry Homes and are used for display purposes only. Perry Homes (Aust) Pty Ltd. QBCC Act Lic. No.718748 NSW Lic No. 110970C