

House Package

From \$ 280,293

Valid until 31 December 2018



Based on basic house *\$201,441

plus listed upgrades



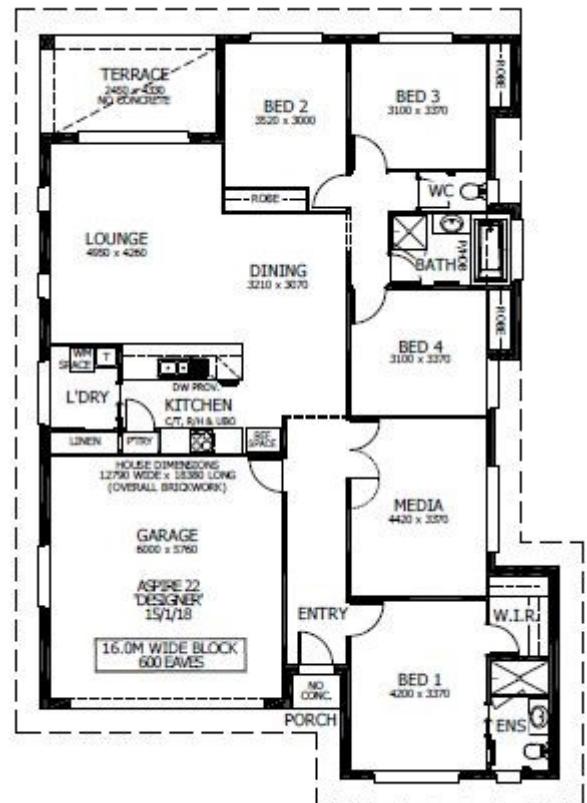
Perry Homes

Aspire 22 - Designer

Floor Area: 205.18m² or 22.09sq
Frontage: 12.84m Depth: 18.42m

Package Inclusions:

- Designer Plus Portico
- Covered Terrace
- Upgraded Designer Kitchen with Stainless Steel Appliances
- 'Reconstituted' stone benchtops in Kitchen
- Fully Ducted Air Conditioning
- Clothesline, letter box and TV Antenna
- All Internal Floor Coverings
- Flyscreens to all windows & sliding doors
- Downlights & LED Electrical Package
- Concrete Allowance to Driveway, Terrace & Porch
- Perry Homes 'Prestige Inclusions Package'
- Site works & Basix allowance of \$30,000 **Subject to Contour Survey*



Noel Simmonds

02 4021 1680

noel.simmonds@perryhomes.com.au

www.hunterregionhouseandland.com.au



Designer Plus Façade shown, upgrades available as an optional extra



Interior image indicative only

Disclaimer

Due care has been taken with the siting, design and pricing of the proposed dwelling based upon current information and is correct at time of publication. This however, may change as a result of other influences such as; developer covenants, local, state or federal government requirements etc. Also, undetermined site conditions such as; tree removal, acoustics, bushfire, rock etc. may be excluded unless otherwise specified. Terms and conditions apply to campaigns and special offers. Plans and images are for illustrative purposes only and may not accurately depict the finished product. Some images may include products which are not supplied by Perry Homes and are used for display purposes only. Perry Homes (Aust) Pty Ltd. QBCC Act Lic. No.718748 NSW Lic No. 110970C