

House Package only
From \$277,390

Based on basic house \$198,577

Valid until 31 December 2018

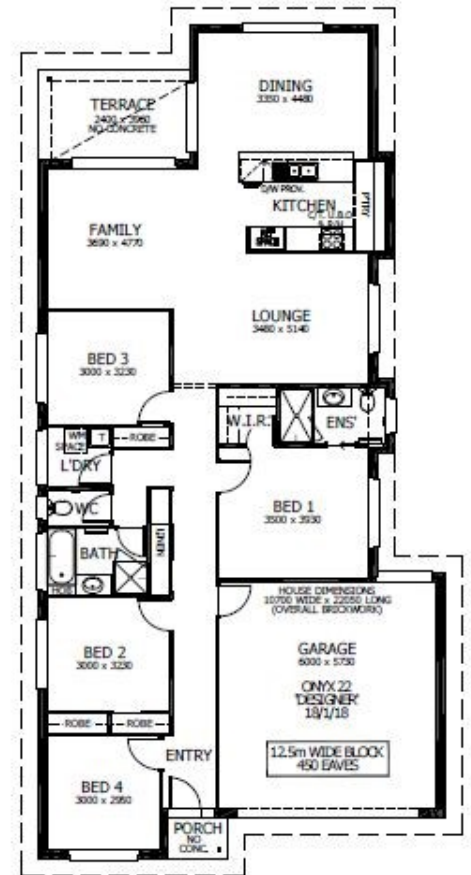


Onyx 22 - Designer

Floor Area: 201.01m² or 21.61sq
 Frontage: 10.70m Depth: 22.05m

Package Inclusions:

- Designer Plus Portico
- Covered Terrace
- Fully Ducted Air Conditioning
- All Internal Floor Coverings
- 'Reconstituted' stone benchtops in Kitchen
- Downlights and LED Electrical Package
- Upgraded Designer Kitchen with Stainless Steel Appliances
- Flyscreens to all windows and sliding doors
- Concrete Allowance to Driveway, Porch and Terrace
- Wall mounted clothesline
- TV Antenna
- Powder coated Letter Box
- Perry Homes "Prestige Inclusions Package"
- Site works & Basix allowance of \$30,000 *Subject to Contour Survey



Noel Simmonds

02 4021 1680

noel.simmonds@perryhomes.com.au

www.hunterregionhouseandland.com.au



Designer Plus Façade options available as upgrades



Image indicative only

Disclaimer

Due care has been taken with the siting, design and pricing of the proposed dwelling based upon current information and is correct at time of publication. This however, may change as a result of other influences such as; developer covenants, local, state or federal government requirements etc. Also, undetermined site conditions such as; tree removal, acoustics, bushfire, rock etc. may be excluded unless otherwise specified. Terms and conditions apply to campaigns and special offers. Plans and images are for illustrative purposes only and may not accurately depict the finished product. Some images may include products which are not supplied by Perry Homes and are used for display purposes only. Perry Homes (Aust) Pty Ltd. QBCC Act Lic. No.718748 NSW Lic No. 110970C